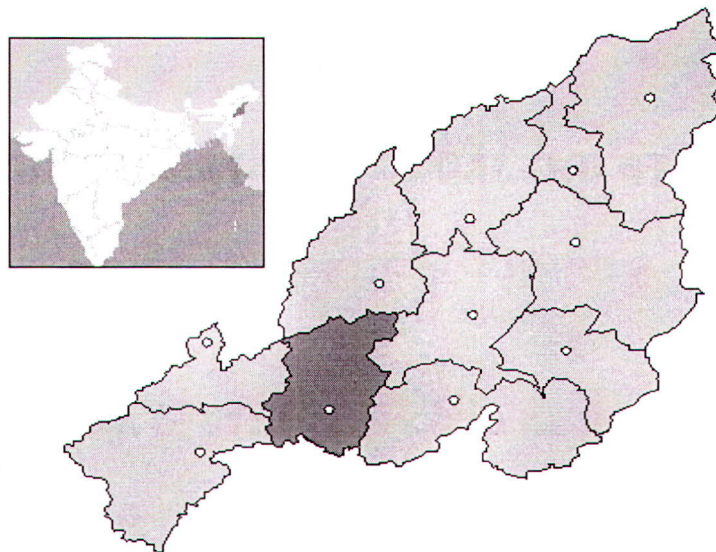




सत्यमेव जयते

Government of India
Ministry of MSME

BRIEF INDUSTRIAL PROFILE
OF
KOHIMA DISTRICT, NAGALAND STATE



MICRO, SMALL & MEDIUM ENTERPRISES

सूक्ष्म, लघु एवं मध्यम उद्यम

GOVERNMENT OF INDIA
MINISTRY OF MICRO, SMALL & MEDIUM ENTERPRISES

BR. MSME-DEVELOPMENT INSTITUTE,

OLD INDUSTRIAL ESTATE, DIPHU ROAD, DIMAPUR-797112, NAGALAND STATE

Phone No.03862-248552 e-mail:brdcdi-dima@dcmsme.gov.in

CONTENTS

Content No.	Topic	Page No
	Forward	3
	Kohima District-Information	4
	Map of Nagaland & Kohima District	5
	VIP Visit of Kohima District	6
1.	General characteristics of the District	7
1.1.	Location & Geographical Area	8
1.2.	Topography	8
1.3.	Availability of Minerals	9
1.4.	Forest	9
	Divisions of Kohima District	10
1.5.	Administrative set up	11
2.	District at a Glance	12
	Banks in Kohima District	14
2.1	Existing Status of Industrial Area in the District	14
3.	Industrial Scenario of Kohima District	15
3.1	Industry at a Glance	15
3.2	Year wise Trend of Units Registered	15
3.3	Details of Existing Micro & Small Enterprises & Artisan Units	16
3.4	Large Scale Industries/ Public Sector Undertakings	19
3.5	Major Exportable Item	19
3.6	Growth Trend	19
3.7	Vendorisation/ Ancillarisation of the Industry	19
3.8	Medium Scale Enterprises	19
3.8.2	Major Exportable Item	19
3.9.1	Service Enterprises	19
3.9.2	Potentials areas for Service industry	19
3.10.	Potentials of new MSMEs	19
	District Industries Centre ,Kohima	22
	IID at Kiruphima, Kohima	22
4.	Existing clusters of Micro & Small Enterprises	23
4.1	Detail of Major Cluster	23
4.1.1	Manufacturing Sector	23
4.1.2	Service Sector	23
4.2	Details of identified cluster	23
4.2.1	Bee keeping	23
4.2.2	Honey	23
4.2.3	Wood Curving	24
4.2.4	Fabrication and General Engg. Cluster	24
4.2.5	Handloom	24
5.	General issue raised by industry association during the course of meeting	26
6.	Training programmes during 2014-15	26
7.	Action Plan for MSME Scheme during 2015-16	27
8.	Steps to set up MSMEs	28
9.	Additional information if any	28

FOREWORD

In pursuance of action plan target for the year 2014-15 it was decided to prepare the District Industrial Profile Report of KOHIMA District with a view to reaching the goals and meeting aspiration envisaged in the plan. A detailed survey of the district was carried out and comprehensive data from various Government agencies like District Industries Centre, Directorate of Industries & Commerce, District Lead Bank (SBI), Nagaland Industries Development Corporation (NIDC), District Statistical Office, District Forest Office, Employment Office, District Agriculture Office, District Fishery Office, NABARD, Employment Office and Financial Institutions etc. were collected. The study has not only analyzed the existing industrial set up but also the prospects of future industrial development in the district.

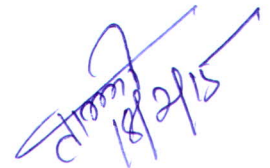
It is hoped that this report will come in handy not only to existing and prospective entrepreneurs but also to various institutions, which are directly or indirectly connected with the industrial development of the district. Preparation of this report has been possible only by obtaining valuable information from various Government and Non-Government organization during the course of survey. To all these organizations, Br. MSME-Development Institute, Dimapur express its grateful acknowledgement for information made available.

The Methodology adopted for the survey report consists of desk survey, documentation of information and data from the reports/records of the Government Departments. The co-operation extended by various Government and Semi-Government organizations like District Industries Centre, Directorate of Industries & Commerce, District Lead Bank, NIDC, District Forest Office, District Fishery Office, NABARD, District Sericulture Office, Employment office, District Supply Office and Financial Institutions etc. is thankfully acknowledged.

I would like to make a special mention of Sri Govindaraj M., Assistant Director (Mech), Sri B. M. Saxena, Assistant Director (Elect.), and Sri Tali Longchar, Deputy Director (G/C) for his strenuous work in the final preparation of this survey report.

Dimapur

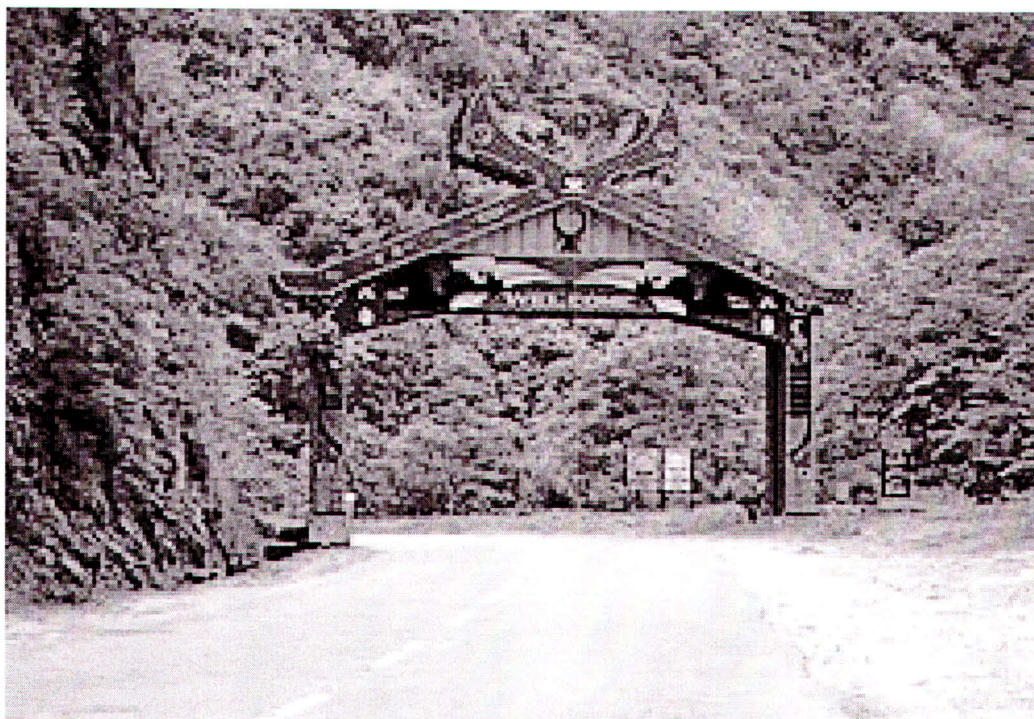
Date: - 18-02-2015



(Tali Longchar)

Deputy.Director I/C

KOHIMA DISTRICT

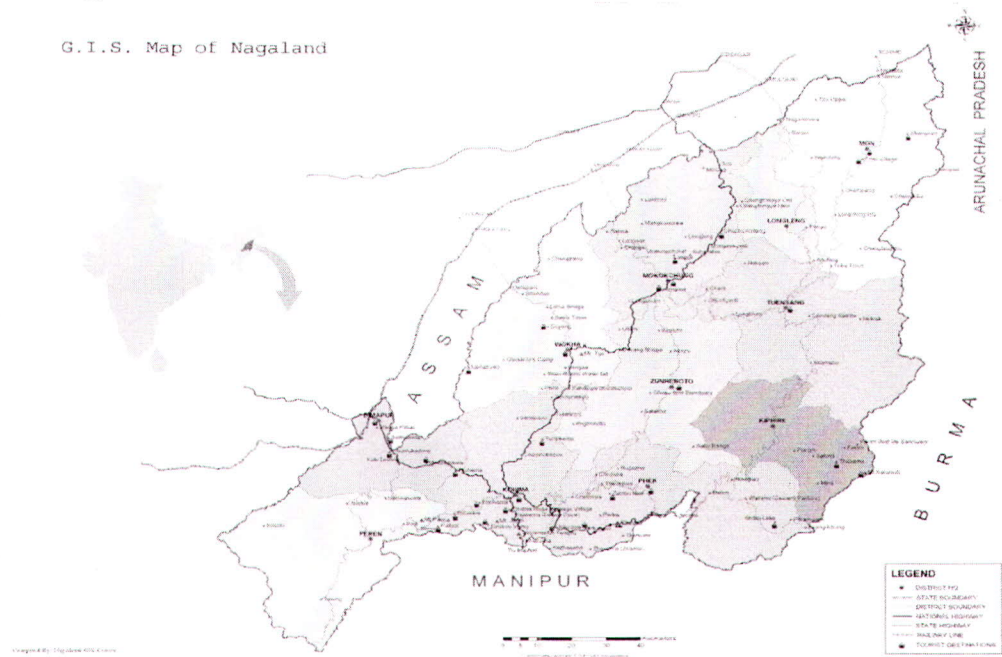


Entrance to Kohima district

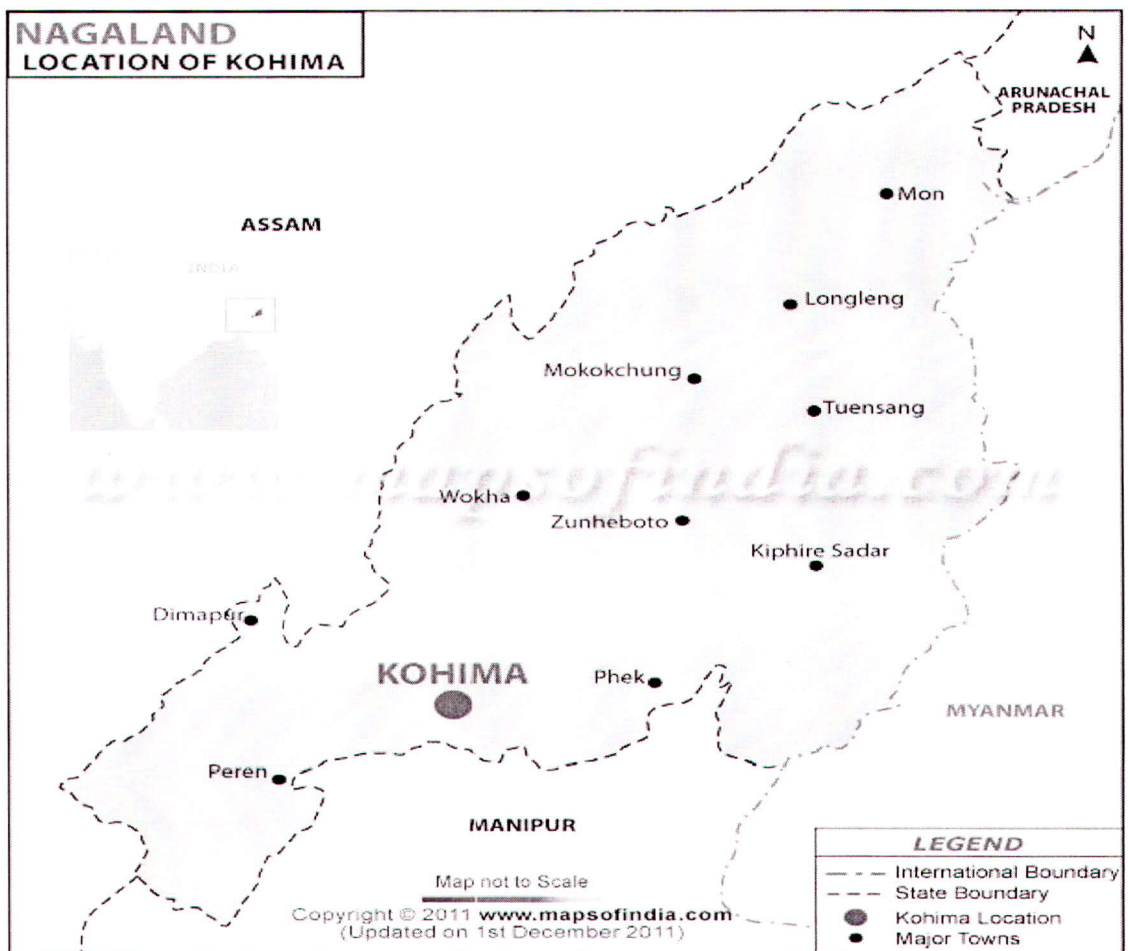
KOHIMA DISTRICT-INFORMATION

Coordinates: -25°40'N 94°07'E25.667°N 94.117°E Coordinates	
STATE	Nagaland
COUNTRY	India
SEAT	Kohima
ELEVATION	1,444 m (4,738 ft)
POPULATION (2011) • TOTAL	2,70,063
TIME ZONE	IST (UTC+05:30)
ISO 3166 CODE	IN-NL-KO
WEBSITE	http://kohima.nic.in/

G.I.S. Map of Nagaland



MAP OF NAGALAND



MAP OF KOHIMA, NAGALAND



Brief Industrial profile of Kohima District

1. General Characteristics of the District

Kohima is a hilly district of India's North Eastern State of Nagaland, sharing its borders with Assam State and Dimapur District in the West, Phek District in the East, Manipur State and Peren District in the South and Wokha District in the North. One of the oldest among the eleven districts of the state, Kohima is the first seat of modern administration as the Headquarters of Naga Hills District (then under Assam) with the appointment of G.H. Damant as Political Officer in 1879. When Nagaland became a full-fledged state on 1st December, 1963, Kohima was christened as the capital of the state. Since then, parts of Kohima district have been carved out thrice - the first in 1973 when Phek District was created, then in 1998 Dimapur was carved out and declared as a separate district and it was in 2004 for the third time that Kohima district once again gave birth to one of the youngest districts in the state called Peren District.

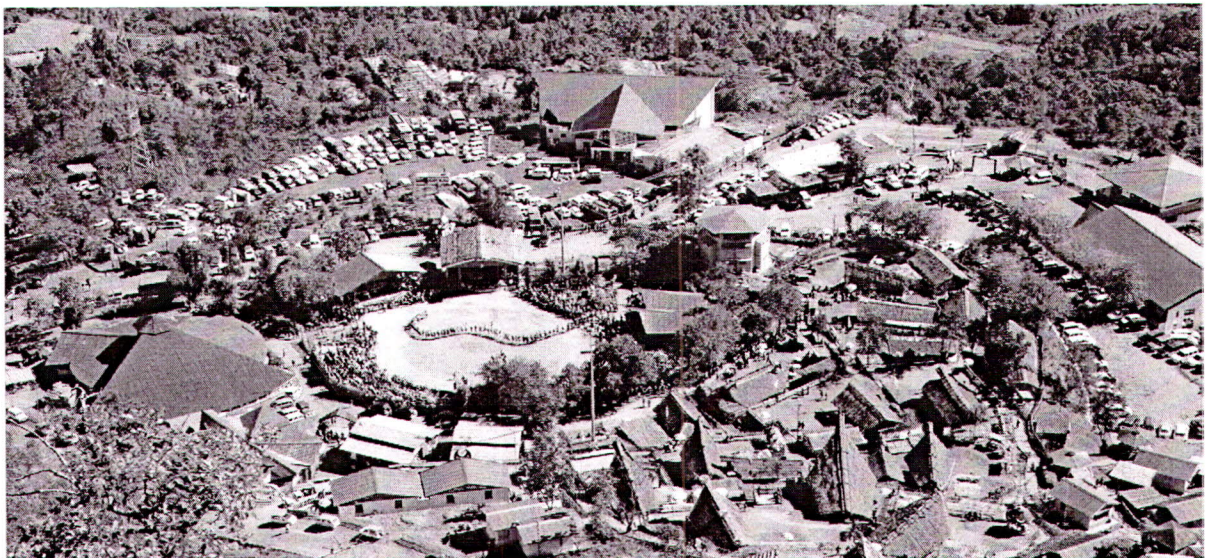
The name Kohima is so called because the Britishers could not pronounce its original name "KEWHIRA" which is the name of the village where Kohima town is located. Kohima village, also called 'Bara Bosti' which is the second largest village in Asia forms the North-Eastern part of Kohima Urban area today.

Demographics:

As of 2011 Census, Kohima district has a population of 270,063. Males constitute 140,118 of the population and females 129,945. Kohima has an average literacy rate of 85.58%, higher than the national average of 74.04 %: male literacy is 89.28 % and female literacy is 81.56 %. In Kohima, 36,157 of the population are under 6 years of age.

The People:

The main indigenous inhabitants of Kohima District are the Angami Nagas and the Rengma Nagas. But Kohima being the capital city, it is a cosmopolitan city with a pot pourri of all the tribes of Nagaland as well as mainland India residing here.



Climate:

Kohima features a more moderate version of a humid subtropical climate. Kohima has a pleasant and moderate climate - not too cold in winters and pleasant summers. December and January are the coldest months when frost occurs and in the higher altitudes, snowfall occurs occasionally. During peak summer months from July-August, temperature ranges an average of 80-90 Fahrenheit. Heavy rainfall occurs during summer.

CLIMATE DATA FOR KOHIMA													
Month	Jan	Feb	Mar	Apr	May	Jun	Jul	Aug	Sep	Oct	Nov	Dec	Year
Average high °C (°F)	16.6 (61.9)	17.9 (64.2)	22.1 (71.8)	24.1 (75.4)	24.4 (75.9)	24.9 (76.8)	25.0 (77)	25.4 (77.7)	25.0 (77)	23.4 (74.1)	20.6 (69.1)	17.7 (63.9)	22.2 (72)
Average low °C (°F)	8.1 (46.6)	9.3 (48.7)	12.7 (54.9)	15.6 (60.1)	16.9 (62.4)	18.1 (64.6)	18.8 (65.8)	18.9 (66)	18.1 (64.6)	16.6 (61.9)	13.1 (55.6)	9.4 (48.9)	14.6 (58.3)
Rainfall mm (inches)	11.7 (0.461)	35.4 (1.394)	47.6 (1.874)	88.7 (3.492)	159.2 (6.268)	333.8 (13.142)	371.8 (14.638)	364.0 (14.331)	250.1 (9.846)	126.0 (4.961)	35.2 (1.386)	7.8 (0.307)	1,831.3 (72.1)
Avg. rainy days	2	3.9	5.8	12.2	16.9	23.1	24.6	22.9	19.1	10.7	3.6	1.4	146.2
Source: WMO													

1.1 Location & Geographical Area

Kohima has the advantage of being centrally located - being bounded by the state of Assam on the west, Wokha district on the north, Zunheboto and Phek districts on the east and Manipur state on the south. Geographical area is 1595 Sq.km excluding peren (159500 Ha)

1.2 Topography

Kohima is located at 25°40'N 94°07'E 25.67°N 94.12°E. It has an average elevation of 1261 metre (4137 feet). Kohima town is located on the top of a high ridge and the town serpentine all along the top of the surrounding mountain ranges as is typical of most Naga settlements.

1.3 Availability of Minerals

PRODUCTION OF MINERAL 2013-14

Sl.No	Name of Mineral	Production in Tones-2013-14
A	Major Mineral	Nil
B	Minor Mineral	
1	Sand	200
2	Sandstone	150
3	Boulder stone	1500
4	Granite	NIL

Source: Dept of mines & Geology

1.4. Forest

Area under Forest:

Total Area under forest	-	81029.01 Hectares
Purchase forest	-	3926.01 Hectares
Wild life sanctuary	-	923.00 Hectares
Village forest	-	76180.00 Hectares



DIVISIONS

- KEWHIMA VILLAGE OR KOHIMA VILLAGE
- VISWEMA VILLAGE
- KIDIMA VILLAGE
- KHUZAMA VILLAGE
- KEZOMA VILLAGE
- KEZO BASA/TOWN
- SAKHABA VILLAGE
- PHESAMA VILLAGE
- MIMA VILLAGE
- PFUCHAMA VILLAGE
- JAKHAMA VILLAGE
- KIGWEMA VILLAGE
- JOTSOMA VILLAGE
- KHONOMA VILLAGE
- MERIEMA VILLAGE
- MEZOMA VILLAGE
- GARIPHEMA VILLAGE
- TUOPHEMA VILLAGE
- BOTSA VILLAGE
- NERHEMA VILLAGE
- CHIEPHOBOZOU VILLAGE
- CHIECHAMA VILLAGE
- CHEDEMA VILLAGE
- THIZAMA VILLAGE
- TUOPHE PHEZOU VILLAGE
- 32 RENGMA NAGA VILLAGES



Deputy Commissioner's Office, Kohima

1.5. Administrative set up

a) Deputy Commissioner's office, Kohima

b) **ADC HQs under Kohima District**

Sl No	Name
1	TSEMINYU
2	CHIEPHOBOZOU

c) **SDO(C) HQs under Kohima District**

Sl No	Name
1	JAKHAMA
2	ZUBZA (SECHÜ)

d) **EAC Circles under Kohima District**

Sl No	Name
1.	KEZOCHA
2.	CHONGIZUN (TSONGIN)
3.	BOTSA

e).The Sub-divisions

Sl No	Name
1.	KOHIMA
2.	TSEMINYU
3.	CHIEPHOBOZOU
4.	JAKHAMA
5.	ZUBZA (SECHÜ)

2. District at Glance

Sl.No	Particular	Year	Unit	Statistics
(A)	Area		Hectares	159500
(B)	Administrative units			
	i) SUB DIVISIONS	DC+ADC+SDO	Nos	5
	ii) TEHSIL			4
	iii) SUB-TEHSIL		EAC	3
	iv) PATWAR CIRCLE			6
	v) PANCHAYAT SIMITIS			
	vi) NAGAR NIGAM			
	vii) NAGAR PALIKA			
	viii) GRAM PANCHAYATS		Nos	97
	ix) REVENUE VILLAGES		Nos	97
	x) ASSEMBLY AREA			7
2	Population		Total	270063
(A)	SEX –WISE			
	I)MALE	2011	Nos	63748
	II)FEMALE	2011	Nos	59401
(B)	I) MALE	2011	Nos	76370
	II)FEMALE	2011	Nos	70544
3.	Agriculture			
A	LAND UTILIZATION			
	i) TOTAL AREA	2011	Hectare	159500
	ii) FOREST COVER		Hectare	49268
	iii) NON AGRICULTURE LAND		Hectare	94033
	iv) CULTIVATION BARREN LAND		Hectare	16199
4.	Forest			
	i)Forest		Hectare	81029.01
5	Livestock & Poultry			
A	Cattle			
	I)COWS	2007	Nos	37687
	II)BUFFALOES	2007	Nos	1546
	III)MITHUN	2007		5868
B	Other livestock			
	I)GOATS	2007	Nos	9082
	II)PIGS	2007	Nos	74116
	III)SHEEP	2007	Nos	640
	IV)RABBIT	2007	Nos	3924
	V)DUCK	2007	Nos	12345
	VI)FOWL	2007	Nos	323444
	VII)DOGS	2007	Nos	17114
	iv)Railways			
	i) Length of rail line	2010-11	Kms	Nil
	V)Roads			
	a)National Highway	2010-11	Kms	76
	b) State Highway	2010-11	Kms	297
	c) Main District highway	2010-11	Kms	216.80
	d) other district	2010-11	Kms	393.45
	e) Rural Road/Agriculture marketing Board Roads	2010-11	Kms	332.9
	f) Kachacha Road	2010-11	Kms	730.55

VI) Communication			
a) Telephone connections	2010-11	Nos	55322
b) Post offices	2010-11	Nos	52
c) Telephone Centre	2010-11	Nos	45
d) Density of Telephone	2010-11	Nos/1000 person	55.32
e) Density of Telephone	2010-11	Nos/KM	100
f) PCO	2010-11	Nos	562
g) PCO-STD	2010-11	Nos	435
h) Mobile	2010-11	Nos	55832
VII) Public Health			
a) Allopathic Hospital(District Hospital)	2010-11	Nos	1
b) Beds in Allopathic Hospital	2010-11	Nos	574
c) Ayurvedic Hospital	2010-11	Nos	NA
d) Beds in Ayurvedic Hospital	2010-11	Nos	NA
e) Unani Hospitals	2010-11	Nos	NA
f) Community Health centre	2010-11	Nos	3
g) Primary Health Centre	2010-11	Nos	14
h) Dispensaries	2010-11	Nos	NA
i) Sub-Health centres	2010-11	Nos	40
j) Subsidiary Health Centre	2010-11	Nos	2
k) Private Hospitals	2010-11	Nos	NA
VIII) Education			
a) Primary School	2010-11	Nos	236
b) Middle Schools	2010-11	Nos	76
c) Secondary & Senior Secondary Schools	2010-11	Nos	Govt-16 Govt-Rec-102
d) Colleges	2010-11	Nos	Govt-3 Govt-Rec-17
e) Technical university	2010-11	Nos	1

BANKS IN KOHIMA DISTRICT

Sl.No	Name of Bank	Nos
1	AXIS BANK	2
2	BANK OF BARODA	1
3	BANK OF INDIA	1
4	CANARA BANK	1
5	CENTRAL BANK OF INDIA	1
6	FEDERAL BANK	1
7	HDFC BANK	1
8	ICICI BANK	2
9	IDBI BANK	1
10	PUNJAB & SINDH BANK	1
11	STATE BANK OF INDIA	11
12	UNION BANK OF INDIA	1
13	UNITED COMMERCIAL BANK	1
14	VIJAYA BANK	2
15	NAGALAND RURAL BANK, KOHIMA	3
16	THE NAGALAND STATE CO-OPERATIVE BANK LTD	4
	TOTAL	34

Annual Credit Plan 2014-15.(Rs. in lacs)

District	Crop Loan	Agri Term	Total AGL	SME	OPS	TPS	NPS	Grand Total
Kohima	5000	2000	7000	2000	3200	12200	9550	21750

Source: - SLBC, Nagaland

2.1. Existing Status of Industrial Areas in the District of Kohima

	Name of Industrial Area	Land acquired in hectare)	Land Developed in hectare	Prevailing rate per sqm in Rs	No of Plots	No of allotted plots	No of vacant plots	No of units in production
1	Mini Industrial Growth Centre, Viswema	1.0	0.5	150	30	5	25	5

Source: DIC, Kohima

3. Industrial Scenario Kohima District.

3.1. Industry at Glance

Sl.No	Head	Unit	Particular
1	Registered industrial unit	204	Micro Enterprises
2	Total Industrial unit	204	Micro Enterprises
3	Registered medium & large unit	NIL	NIL
4	Estimated average no of daily workers employed in SME Sector	63 nos	Employees
5	Employment in large and Medium Industries	NIL	NIL
6	No of Industrial area	One	Mini Industrial growth Centre, Viswema
7	Turnover of SME Sector	155 lacs	Micro sector
8	Turnover of Medium & large scale Industries	NIL	NIL

3.2 Year wise Trend of units Registered

	Year	No of Registered units	Employment	Investment in Rs
Upto	2010-11	79	703	5,45,00,000
	2011-12	42	254	3,38,50,000
	2012-13	32	290	6,02,44,000
	2013-14	33	287	4,15,85,500
	2014-15 (till November 2014)	18	161	66,00,000
	Total	204	1695	19,67,79,500

3.3. Details of Existing Micro & Small Enterprises and artisan units in the District as per NIC Code

Sl.No	NIC 2004	DESCRIPTION	Number of units	Investment (lacs)	Employment
1	1	Agriculture, Hunting and Related Service Activities	12	30	105
2	2	Forestry, Logging and Related Service Activities	Nil	Nil	Nil
3	5	Fishing, Aquaculture and Service Activities Incidental to Fishing		Nil	Nil
4	10	Mining of Coal and Lignite; Extraction of Peat	Nil	Nil	Nil
5	11	Extraction of Crude Petroleum and Natural Gas; Service Activities	Nil	Nil	Nil
		incidental to Oil and Gas Extraction, excluding Surveying		Nil	Nil
6	12	Mining of Uranium and Thorium Ores	Nil	Nil	Nil
7	13	Mining of Metal Ores	Nil	Nil	Nil
8	14	Other Mining and Quarrying	18	400.8	228
9	15	Mfg of Food Products and Beverages	12	286.92	103
10	16	Mfg of Tobacco Products	Nil	Nil	Nil
11	17	Mfg of Textiles	Nil	Nil	Nil
12	18	Mfg of Wearing Apparel; Dressing and Dyeing of Fur	31	113.21	271
13	19	Mfg of Leather & Leather Product	Nil	Nil	Nil
14	20	Mfg of Wood and Wood Products	33	125.63	280
15	21	Mfg of Paper and Paper Products	Nil	Nil	Nil
16	22	Publishing, Printing & Reproduction of Recorded Media	6	447.5	40
17	23	Mfg of Coke & Refined Petroleum Products and Nuclear Fuel	Nil	Nil	Nil
18	24	Mfg of Chemicals and Chemical Products	6	26.285	44
19	25	Mfg of Rubber and Plastics Products	Nil	Nil	Nil
20	26	Mfg of Other Non-Metallic Mineral Products	Nil	Nil	Nil
21	27	Mfg of Basic Metals	Nil	Nil	Nil
22	28	Mfg of Fabricated Metal Products	45	173.86	302
23	29	Mfg of Machinery and Equipment n.e.c.	Nil	Nil	Nil
24	30	Mfg of Office, Accounting & Computing Machinery	Nil	Nil	Nil
25	31	Mfg of Electrical Machinery and Apparatus n.e.c.	Nil	Nil	Nil
26	32	Mfg. of Radio, Television and Communication Equipment and Apparatus	Nil	Nil	Nil
27	33	Mfg of Medical, Precision and Optical Instruments, Watches and Clocks	Nil	Nil	Nil
28	34	Mfg of Motor Vehicles, Trailers and Semi-Trailers	Nil	Nil	Nil
29	35	Mfg of Other Transport Equipment	Nil	Nil	Nil
30	36	Mfg of Furniture; Manufacturing etc.	Nil	Nil	Nil
31	37	Recycling	Nil	Nil	Nil
32	40	Electricity, Gas, Steam and Hot Water Supply	Nil	Nil	Nil
33	41	Collection, Purification and Distribution of Water	Nil	Nil	Nil

34	45	Construction	Nil	Nil	Nil
35	50	Repair & Maintenance of Motor Vehicle, Retail Sale of Automotive Fuel	21	102.44	161
36	51	Wholesale of Trade and Commission Trade	Nil	Nil	Nil
37	52	Repair & Maintenance of Personal & Household Goods; Retail Trade	Nil	Nil	Nil
38	55	Hotels and Restaurants	2	100	17
39	60	Land Transport; Transport via Pipelines	Nil	Nil	Nil
40	61	Water Transport	Nil	Nil	Nil
41	62	Air Transport	Nil	Nil	Nil
42	63	Supporting & Auxiliary Transport & Travel Agents Activities	Nil	Nil	Nil
43	64	Post and Telecommunications	Nil	Nil	Nil
44	65	Financial Intermediation, Except Insurance & Pension Funding	Nil	Nil	Nil
45	66	Insurance and Pension Funding, Except Compulsory Social Security	Nil	Nil	Nil
46	67	Activities Auxiliary to Financial Intermediation	Nil	Nil	Nil
47	70	Real Estate Activities	Nil	Nil	Nil
48	71	Renting of Machinery & Equipment Without Operator & of personal & House Hold goods	Nil	Nil	Nil
49	72	Computer and Related Activities	6	24.83	38
50	73	Research and Development	Nil	Nil	Nil
51	74	Other Business Activities	7	38.32	61
52	75	Public Administration and Defense; Compulsory Social Security	Nil	Nil	Nil
53	80	Education	Nil	Nil	Nil
54	85	Health and Social Work	Nil	Nil	Nil
55	90	Sewage and Refuse Disposal, Sanitation and Similar Activities	Nil	Nil	Nil
56	91	Activities of Membership Organization etc.	Nil	Nil	Nil
57	92	Recreational, Cultural and Sporting Activities	Nil	Nil	Nil
58	93	Other Service Activities	5	98	45
59	95	Activities of Private Households as Employers of Domestic Staff	Nil	Nil	Nil
60	96	Undifferentiated Goods - Producing Activities of Private Households for Own Use	Nil	Nil	Nil
61	97	Undifferentiated Service - Producing Activities of Private Households for Own Use	Nil	Nil	Nil
62	99	Not Reported	Nil	Nil	Nil
		Total	204	1967.795	1695

Source: - DIC, Kohima



O/o The Directorate of Industries & Commerce, Govt of Nagaland at KOHIMA



Naga Hospital, Kohima

3.4 Large scale Industries/Public sector undertakings:- None

3.5 Major Exportable item:- Naga Chilli , Ginger,Vegitables etc products are being exporting as of now.

3.6 Growth Trend.

The growth trend in the district is very low since no major Industries existed and employment scope is also very low. Roads are so to say the main means of transport and communication. However, the condition of most these roads are deplorable which is hampering the expansion of potentials economic activities in district.

3.7 Vendorisation/Ancillarisation of the Industry: Nil

3.8 Medium scale Enterprises: Nil

3.8.2 Scope for exportable item:-

Naga chilly, Maize, Ginger, Banana, Honey, Lemon grass etc

3.9.1 Service Enterprises:-

Mobile, Electrical repairing, Motor workshop, Hotel, Transport, Tourism etc

3.9.2 Potentials area of service industry:

Tourism –Adventure Tourism & Village Tourism in Kohima & surrounding areas

3.10 Potential for new MSMEs

1. Organic Food Products
2. Bamboo
3. Medicinal & Aromatic plants
4. Consultancy firms /units for giving fiscal guidance to the 1st generation entrepreneurs

Along with traditional activities, The DIC, Kohima can introduce new Schemes for the benefits of Entrepreneur, to take up programmes for up-gradation new Technology under M/o MSME, Govt. of India like MSE-CDP, MSE-MDA, TREAD for women, Lean manufacturing, Design clinic, ICT, Bar Code, IPR etc in the long run.

Development of agro-processing units like extraction of fibers from pineapple leaves, dehydration unit for ginger and cardamom, extraction of citronella oil are some potentials non-farm activities, which can be developed in the district. New scheme are patchouli cultivation, Tea garden and vanilla cultivation in the district. On the basis of availability of raw material, labour and other infrastructure, non-farm sector investment in the district can be in the following areas:-

AGRO-BASED.

- a) Rice Mill
- b) Ginger processing (dehydration plant)
- c) Fruit/vegetable preservation/canning centre
- d) Starch production unit
- e) Poultry/ cattle feed plant
- f) Patchouli, Ginger, Tea garden, Vanilla etc
- g) Food processing products etc g) Piggery farm
- h) Soya milk and toffee processing unit
- i) Potato and Banana chips processing unit
- j) Pop corn making unit
- k) Pineapple juice & packing unit
- l) Passion fruits extraction & packing unit
- m) Bakery
- n) Milk processing
- o) Stone crushing
- p) Building Materials
- q) Tea Processing Units
- r) Honey bee
- s) Handloom products
- t) Readymade Garments
- u) Ice cream units
- v) Potato chips
- w) Banana chips
- x) Dalmoth

FOREST BASED:

- a) Agarbati bamboo sticks
- b) Furniture making
- c) Cane and bamboo unit
- d) Handicrafts
- e) wood curving
- f) Broom unit
- g) Ayurvedic Medicine
- h) bamboo Mat ,Door & window frame
- i) Floriculture

MINERAL –BASED:-

- a) Stone crushing b) Stone cutting & polishing c) Stone curving
- d) Boulder mall. E) Stone dressing f) cement Jally & other products
- g) Pottery i) Sand stockiest

TEXTILE BASED:-

- a) Tailoring unit b) wool weaving unit c) Hand loom unit
- d) Thread making unit e) Ready-made garments unit

ENGINEERING BASED:

- a) Fabrication of grills, iron gates etc
- b) Repairs to machinery
- c) Motor works
- d) Printing press
- e) Barbed Wire
- f) Agricultural Implements
- g) Tin-smithy
- h) Wax candle
- i) Washing Soap
- j) Security Equipments
- k) Auto machine parts

DEMAND BASED:-

- a) Auto repair works
- b) Bakery & Confectionery unit
- c) Electrical Repair unit
- d) Pickle making
- e) Fish dry making
- f) Cyber café
- g) Internet service unit
- h) Green vegetables shop
- i) Spice Grinding etc

The **District Industries Center, Kohima** needs to be strengthened extension work achieve the growth envisaged by exploiting the estimated potential. The present position in regard to the infrastructure available in terms of training centers, road networks, services centers, etc is inadequate and need to be augmented to bring about apposite change in the climate. At present, the district has the following networks of centers/units.

1. Bee keeping unit-	1
2. Lemon grass Distillation unit-	1
3. Rural artisan project training unit-	1
4. Steel trunk	4
5. Mini Rice mills	12
6. Handloom demonstration unit	4

To encourage prospective entrepreneurs to take up industrial activities, there are provisions to provide margin money/ seed money/ subsidy by the implementing agencies. However there are several constraints that may be highlighted are:-

- a) Lack of basic infrastructure facilities, in-adequate marketing support/ accessibility and raw material supply.
- b) In-adequate power supply
- c) Shortage of skilled /trained manpower
- d) Lack of industrial experience, non-availability of managerial, administrative and technical experience among the local entrepreneurs.
- e) High cost raw materials and transportation
- f) Lack of co-ordination among various development agencies
- g) Credit flow is very low due to poor return of bank loans.

INTEGRATED INFRASTRUCTURAL DEVELOPMENT (IID), Kiruphima at Kohima:-

In pursuance of the Industrial Policy measures for promoting and strengthening small and tiny village enterprises, the Integrated Infrastructural Development (IID) Scheme was launched in 1994. INTEGRATED INFRASTRUCTURAL DEVELOPMENT (IID), Kiruphima, Kohima, Nagaland has been set up by Directorate of Industries & Commerce, Govt. Of Nagaland, Kohima during the year 2012-13.

4. Existing clusters of Micro & Small Enterprises:

4.1. Detail of major cluster: 2 Nos

4.1.1 Manufacturing sector: 2 Nos

4.1.2 Service sector: Nil

4.2 Details for Identified cluster:-

4.2.1 Name of the Cluster: - Bee keeping

1	Principal products Manufactured in the cluster	Honey products,
2.	Name of the cluster	Sikhazou bee keeping cluster, Kohima
3.	No of functional units in the clusters	45 Nos
4.	Turnover of the clusters	1.00 lacs
5.	Value of exports from the clusters	Nil
6.	Employment in clusters	95 Nos
7.	Average investment in plant &Machinery	1.00 lacs
8.	Major issues/ requirement	Rearing problem for flower, loan, box, tools etc
9	Presence of capable institutions	Honey Mission of Nagaland, Kohima
10	Thrust Areas	Thrust building, Capacity training, Exhibition etc
11	Problems &constraints	Exporting of products to be up-gradation needs for training, excess to modern technology etc,

Presents status of the cluster: - Name of the cluster: Honey cluster at Kohima District

4.2.2 .Name of the cluster: One

1	Principal products Manufactured in the cluster	
2	Name of the cluster	Honey Cluster at JAKHAMA
3	No of functional units in the clusters	25 Nos
4	Turnover of the clusters	1.6 lacs
5	Value of exports from the clusters	NIL
6	Employment in clusters	50
7	Average investment in plant &Machinery	2.0 Lacs
8	Testing Area	Quality, Packaging etc
9	Thrust Areas	Rural Area
10	Access to export market	NIL

4.2.3. Wood Curving cluster: - One at KOHIMA

1	Principal products Manufactured in the cluster	
2	Name of the association	Wood Curving Association Kohima
3	No of functional units in the clusters	30 Nos
4	Turnover of the clusters	2.0 lacs
5	Value of exports from the clusters	Nil
6	Employment in cluster	124
7	Average investment in plant & Machinery	5.0 Lacs
8	Major Issues	Technology, design, Quality Improvement etc
9	Access to export market	NIL

4.2.4. Fabrication and General Engg cluster: - Steel Fabrication unit, Kohima

1	Principal products Manufactured in the cluster	Grill, Gate, Shuttle, welding, etc
2	Key trade Association address	Steel fabrication Association, Kohima
3	No of functional units in the clusters	27 Nos
4	Turnover of the clusters	1.50 lacs
5	Value of exports from the clusters	Nil
6	Employment in clusters	162 Nos
7	Average investment in plant & Machinery	2.50 lacs
8	Testing Area	Quality , design, New technology improvement to enhancements of products etc
9	Major issues	Very old methods of production, poor design, poor quality control etc
10	Access to export market	Nil

4.2.5 Name of the cluster: - Handloom cluster at VISAMA ,Kohima

1	Principal products Manufactured in the cluster	Local loom, handloom
2	Name of the Association	Kohima handloom Association, Kohima
3	No of functional units in the clusters	50 Nos
4	Turnover of the clusters	1.50 lacs
5	Employment in clusters	100 Nos
6	Average investment in plant & Machinery	1.00 lacs
7	Major issues	Design, new technology
8	Access to export market	Nil

5.0 General issues raised by industry associations during the course of meeting

1. Difficulties faced by the entrepreneurs of EM-II registration by the state government agencies.
2. Re-constitution of MSEFC in the state of Nagaland is required at the earliest for the existing MSMEs.
3. CLCSS is not implementing in Nagaland State by some Commercial Banks.
 - I. lack of awareness among branch level bankers.
 - II. There should be some mechanism for tracking of loan application status, so that the entrepreneur gets present status of their loan application.
4. Bankers avoid accepting the cases under CGTMSE especially for the new entrepreneurs and insist for the collateral security.

6.0 Prospects of training programmes during 2014-15

Six week ESDP(Gen)

	Name of programe	Date and Venue	No of Person Trained																GT*
			SC		ST		PH		Min		ES		OBC		Oth/Gen		Total		
			M	F	M	F	M	F	M	F	M	F	M	F	M	F	M	F	
1.	Food Processing	05.11.14-20.12.14	-	-	-	17	-	-	-	-	-	-	-	3	-	-	-	20	20

6.1 Prospects of training programmes during 2015-16 Proposal.

Sl.No	Name of the programmed	Subject	No of proposed programme to be conducted
1	ESDP	ESDP on Tally ESDP on DTP	02
2	MDP	General Enterprise Management Financial Management	02
3	Awareness Campaign on Tea processing Technology of Mini Tea plant at Kohima	Tea plantation Association of Nagaland	01
4	EDP	For final year ITI	02
5	IMC	For industry on MSME schemes for institutions	02

7. Action plan for MSME Schemes

Sl.No	Name of the Scheme	Proposed activity on the Scheme
1	MSE-CDP	1 No Wood Curving at Kohima
2	ISO-9000/14000/HACCP reimbursement	2 Nos of MSEs will be motivated for obtaining the benefit under the scheme
3	MSE-MDA	5 Nos of cases to be processed
4	CLCSS	2 Nos of MSEs will be motivated for obtaining the benefit under the scheme
5	Capacity Building & strengthening of data base	01 proposal of registered association will be forwarded for strengthening of data base
6	International cooperation	01 proposal is proposed to be forwarded for an exposure visit
7	TREAD for women	01 proposal will be persuaded under the scheme
8	VDP	01 No of state level VDP with PSUs/large Govt organization for the benefit of local industry
9	National awards	02 numbers of MSMEs will be persuaded
10	NMCP Schemes	
	i) Lean manufacturing	01 No Awareness programme for MSMEs
	ii) Design clinic	01 No Awareness programme for MSMEs
	iii) Market assistance & Tech.up gradation	01 No Awareness programme on packaging
	iv) QMS/QT	01 No Awareness programme for MSMEs
	v) Tech & quality up gradation support	01 No Awareness programme for MSMEs
	vi) ICT	01 No Awareness programme for MSMEs
	vii) Bar code	01 No Awareness programme for MSMEs
	viii) IPR	01 No Awareness programme for MSMEs
	ix) Incubator scheme	Proposal for setting up of incubator from a technical institution will be persuaded

8.0 Steps to set up MSMEs

SL.NO.	TYPE OF ASSISTANCE	INSTITUTIONS
1	Provisional Registration Certificate (EM-1) & Permanent Registration certificate(EM-II)	District Industries Centre Kohima-797001,Nagaland 0370-2242421
2	Identification of project profiles, techno-economic and managerial consultancy services, market survey and economic survey	Br. MSME Development Institute, Old Industrial Estate, Dimapur – 797112, No. 03862-248552 Email:-brdcdi-dima@dcmsme.gov.in
3	Land & Industrial shed	Nagaland Industrial Development Corporation, Opp. Naga Shopping Arcade, Dimapur – 797112, Ph. No. 03862-226473
4	Financial Assistance	a) North Eastern Development Financial Institution, (Branch Office) Supply colony, Dimapur – 797112, Ph. No. 03862-235030 b) Nagaland Industrial Development Corporation, Opp. Naga Shopping Arcade, Dimapur – 797112, Ph. No. 03862-226473 c) Small Industries Development Bank of India, NIDC Complex Dimapur – 797112 Ph. No. 03862-234820 d) National Bank for Agriculture & Rural Development, Circular Road, Khermahal, Dimapur – 797112 e) State Bank of India and Other Nationalized Banks
5	For raw materials under Govt Supply	Nagaland marketing & raw material supply corporation, Dimapur
6	Plant & machinery under hire/purchase basis	NSIC,DIC Camus,4 th mile, Dimapur
7	Power/Electricity	The Executive Engineer,Department of Electricity, Kohima, Nagaland
8	Technical Know-how	Br.MSME-Development Institute, Dimapur District Industries centre, Kohima
9	Quality & standard	Bureau of Indian Standards,Guwahati
10	Marketing /Export Assistance	Nagaland marketing & raw material supply corporation ,Dimapur
11	Other promotional agencies	Commissionerate Khadi Village Industries Office,Super market complex, Dimapur-797112 Ph: 03862-226546 Khadi & Village Industries Board New Secretariat complex, Kohima-797001 ,PH: 0370-2270013 Nagaland Bamboo Development Agency,6 th mile,Dimapur-797112, Ph:03862-240217

9. Additional information if any:- No
