



**DISTRICT INDUSTRIAL PROFILE REPORT  
OF  
DIMAPUR DISTRICT(Code :06)  
Year : 2015**



**GOVERNMENT OF INDIA  
MINISTRY OF MICRO, SMALL & MEDIUM ENTERPRISES  
Br. MSME-Development Institute,  
Old Industrial Estate, Dimapur-797 113, NAGALAND  
Phone No.03862-248552 E-mail:brdcdi-dima@dcmsme.gov.in**

## CONTENTS

Content No.	Topic	Page No
	Foreword	1
	Map of Nagaland & Dimapur District	2
<b>1</b>	General characteristics of the District	3-7
<b>1.1</b>	Location & Geographical Area	7
<b>1.2</b>	Topography	7
<b>1.3</b>	Geology & Mining	8
<b>1.4</b>	Forest	9-10
<b>1.5</b>	Administrative set up	10
<b>2</b>	District at a Glance	11-12
<b>2.1</b>	Existing Status of Industrial Area in the District	13
<b>3</b>	Industrial Scenario of Dimapur District	
<b>3.1</b>	Industry at a Glance	13
<b>3.2</b>	Year wise Trend of Units Registered	13
<b>3.3</b>	District Industries Centre & Details of Micro & Small Enterprises	14-17
<b>3.4</b>	Large Scale Industries/ Public Sector Undertakings	18
<b>3.5</b>	Major Exportable item	18
<b>3.9</b>	Service Enterprises	18
<b>3.10</b>	Potentials of new MSMEs	18-21
<b>3.11</b>	Banking facilities in Dimapur district	21-22
<b>4.2</b>	Details of identified cluster	23-25
<b>5.0</b>	Activities of Nagaland Bamboo Development Agency	25-26
<b>6.0</b>	General issue raised by industry association during the course of meeting	26
<b>7.0</b>	Prospects of Training Programmes during 2014-15	26-27
<b>8.0</b>	Action Plan for MSME Scheme during 2015-16	27-28
<b>9.0</b>	Steps to set up MSMEs	28-29
<b>10.0</b>	Additional information if any	29

## FOREWORD

In pursuance of action plan target for the year 2014-15 it was decided to prepare the District Industrial Profile Report of Dimapur District with a view to reaching the goals and meeting aspiration envisaged in the plan. A detailed survey of the district was carried out and comprehensive data from various Government agencies like District Industries & Commerce Centre, District Lead Bank (SBI), Nagaland Industries Development Corporation (NIDC), District Statistical Office, District Forest Office, Employment Office, District Agriculture Office, District Fishery Office, NABARD Employment Office and Financial Institutions etc. were collected. The study has not only analyzed the existing industrial set up but also the prospects of future industrial development in the district.

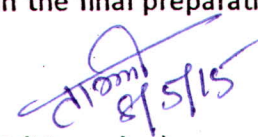
It is hoped that this report will come in handy not only to existing and prospective entrepreneurs but also to various institutions, which are directly or indirectly connected with the industrial development of the district. Preparation of this report has been possible only by obtaining valuable information from various Government and Non-Government organization during the course of survey. To all these organizations, Br. MSME-Development Institute, Dimapur express its grateful acknowledgement for information made available.

The Methodology adopted for the survey report consists of desk survey, documentation of information and data from the reports/records of the Government Departments. The co-operation extended by various Government and Semi-Government organizations like DI&CC, District Lead Bank, NIDC, District Forest Office, District Fishery Office, NABARD, District Sericulture Office, Employment office, District Supply Office and Financial Institutions etc. is thankfully acknowledged.

I would like to make a special mention of Sri M.Govindaraj, Assistant Director (Mech) and Sri B.M.Saxena, Assistant Director (Elec) for his strenuous work in the final preparation of this survey report.

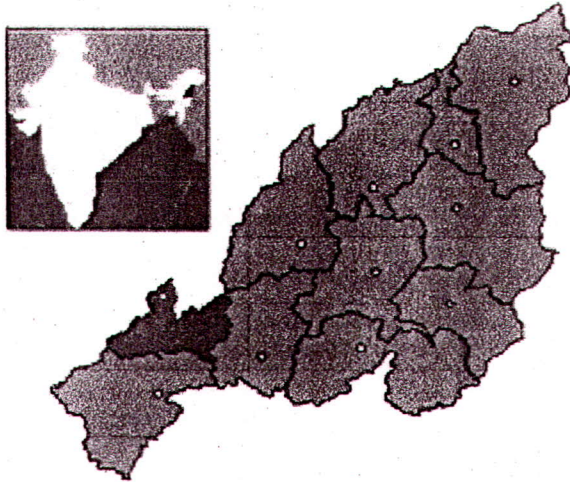
Dimapur

Date: - 08-5-2015

  
(Tali Longchar)

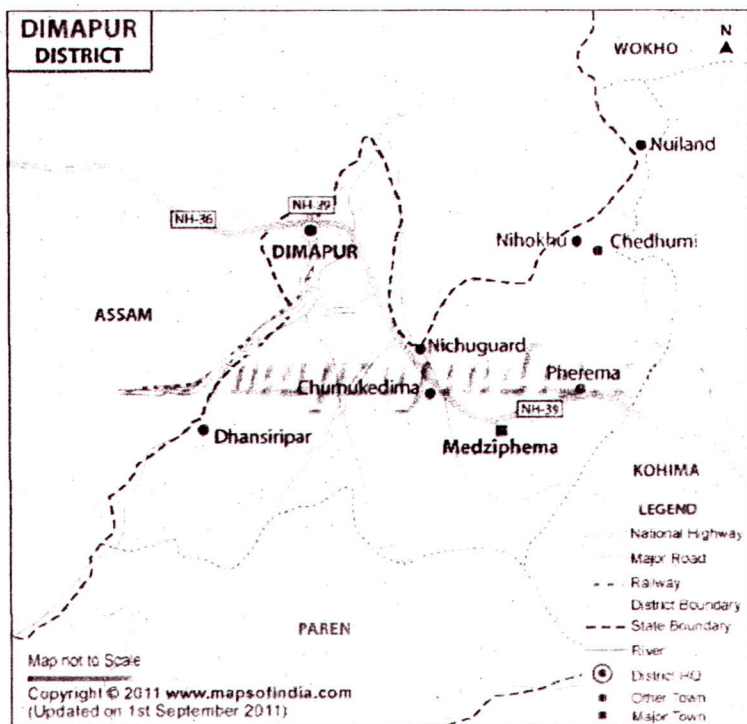
Deputy. Director I/C

## MAP of NAGALAND



### MAP OF DIMAPUR DISTRICT

Country India State Nagaland Seat Dimapur Area • Total 927 km<sup>2</sup> (358 sq mi) Elevation 260 m (850 ft)  
 Population (2011) • Total 379,769 • Density 410/km<sup>2</sup> (1,100/sq mi) Time zone IST (UTC+05:30) ISO  
 3166 code IN-NL-DI Website <http://dimapur.nic.in/>





## **Brief Industrial profile of Dimapur District**

### **1. General Characteristics of the District**

#### **I. Introduction**

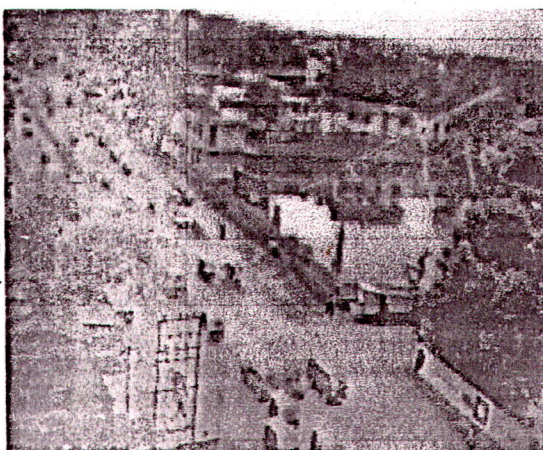
Dimapur is the 8<sup>th</sup> district of Nagaland established in December 1997 and lies between 25°48' and 26°00' North latitude and 93°30' and 93°54' East longitude. The district is bounded by Assam on its North and West, Kohima on the East and Peren District in the South. The district comprises of four blocks and 11 agricultural circles with an area of 927 Square kilometers. Medziphema block has a total area 345 sq. Km. with 67 revenue villages. Likewise, Dhansiripar block is spread over 130 sq.km area with 28 revenue villages, Niuland block has a total area 305 sq. Km approximately 59 revenue villages whereas Kuhuboto block has a total area of 147 sq. Km. with 38 revenue villages. Of the four blocks Niuland sub-division is managed by an Additional Deputy Commissioner and rest of blocks are manned by SDO (Civil).

#### **2.I Historical genesis of the district:**

Dimapur the eighth district of Nagaland, was formed out of the Dimapur sub-division and Niuland sub-division of the then undivided Kohima district in December 1997. At present, the district is bounded by Kohima in East, Peren in South, Karbi Anglong district of Assam in the West and Golaghat district of Assam in the North.

The district has a heterogeneous population with majority comprising of Naga tribes from all over the Nagaland. There is sizable population of non-tribal living in the town areas. Although notified town of Dimapur district has remained the same, the neighboring villages /settlement have expanded considerably over the years merging with town boundary to form a length of more than 13 kms. In addition, there is sizeable rural population in the Sub-division of Niuland, Kuhuboto, Dhansiripar and Medziphema blocks. The total population of the district as per 2011 census is 3, 79,769. The main factor contributing to large increase in population of the district is migration from other parts of state. There is also considerable migration from Assam.

Dimapur town is the commercial hub of the state and is the magnet around which the economic and developmental activities of the district are centered.. The business of the town can trace their history to British times. The town is also a gateway to Nagaland and Manipur state. It is an important rail head and also has an airport. The National Highway 39 that connects Kohima, Imphal and Myanmar border of Moreh runs through Dimapur District.

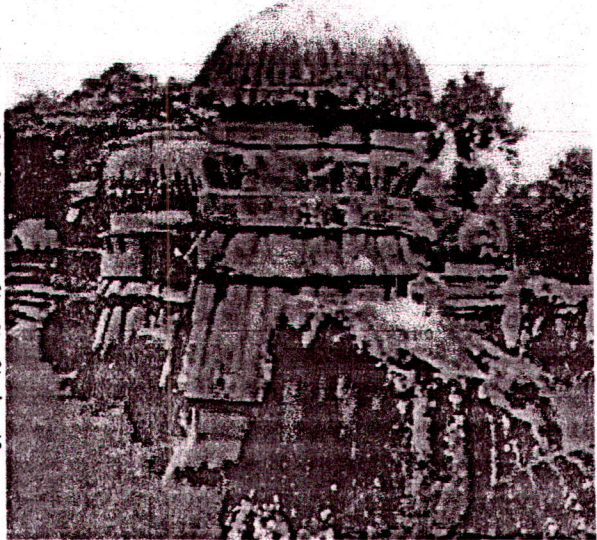




## 2.2 Traditional, cultural and social identity of district

The name **Dimapur** comes from the Kachari dialect. Etymologically **di** means "river", **ma** means "big" and **pur** means "city"; in effect, the name means "the city near the great river." The Kachari tribe did not have a name for this city, though the Ahoms called it Che-din-chi-pen, or "the brick city". It was also called Che-dima, meaning "city on the Dima River" and it was once the ancient capital of 13th century Kachari rulers. "Dimapur" is a later appellation.

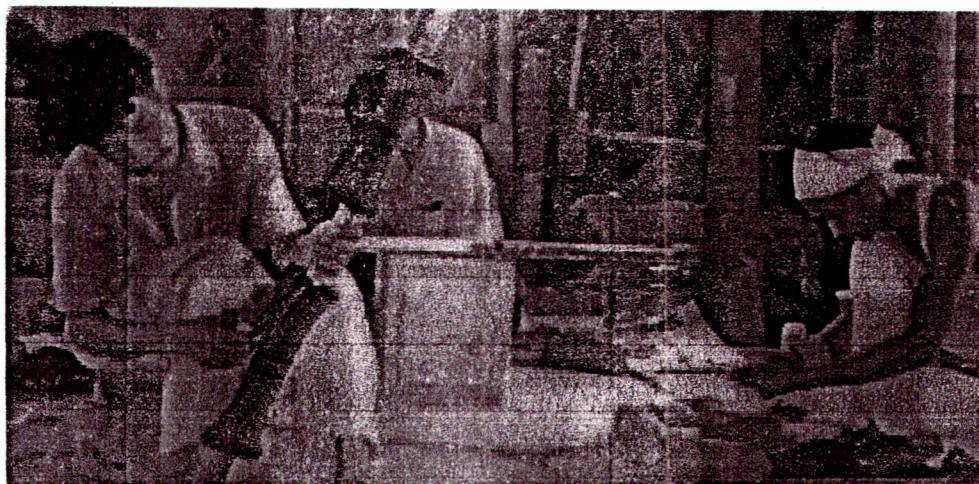
The ancient Kachari capital Dimapur is one of the important sites of the megalithic culture. Most of the ruins appear to be contemporaneous with the Kachari civilization, established before the Ahom invasion in the 13<sup>th</sup> century A.D. There is also evidence of a touch of Hindu influence on most of them, though these are predominantly Non-Aryan, with elaborate rituals and the cult of fertility. Besides the monoliths the ancient Kachari capital Dimapur contains other ruins of temples, embankments and tanks.



Dimapur city, the major commercial hub in Nagaland, has a heterogeneous mix of people from all over India, and for which it is also known as "mini India." Besides the dominant Naga tribe who comprises about 50% of the city's population, other prominent groups include Bengalis, Assamese, Nepalese, Biharis, Marwaris, Punjabis and also Tamils and Keralites. In the last two decades, Tibetan traders have also settled in the city.

In Dhansiripahar sub division, the tribes inhabiting the area is predominantly Angami, Sumi, Kachari and Chakhesang while in Medziphema sub division, the Angami tribe is predominant although a few Kuki and Sumi villages are also found. In Kuhuboto and Niuland sub divisions, the Sumis are the predominant tribe inhabiting the areas. All these tribes have their own customary laws which dominate their social life. The Village Councils are the local bodies through which such customary laws are enacted. The norms and traditions regarding marriage, divorce, inheritance, death etc are governed by such customary laws. Disputes regarding land, water and such resources and even personal disputes are very often resolved based on these customary laws.





**Fig: Diezephe-The craft village of the district**

In Dimapur district, all these tribes also celebrate their own indigenous cultural festivals. The following is a brief write up on the festivals of the major tribes that inhabit the district. The **Angami** tribe celebrates **Sekrenyi** in the month of February. It normally falls on the 25th day of the Angami month of Kezei. The ten-day festival is also called Phousanyi by the Angami's. The festival follows a circle of ritual and ceremony, the first being "Kizie" followed by "Dsuseva" (touching the sleeping water) sacrifices are also made during this time.

**Ahuna** is a traditional post harvest festival of the **Sumi** tribe. Ahuna signifies the celebration of the seasons harvest's in thanks giving, while evoking the spirits for good fortune in the New Year **Tuluni** is a festival of great significance. The festival is marked with feast as the occasion occurs in the bountiful season of the year.

It may be mentioned that other tribes who have settled in Dimapur also celebrate their festivals with as much pomp and gaiety. The **AO** tribe observes **Moatsü Mong** after the sowing is done. It provides the Aos a period of recreation after the strenuous job. The festival marked by vigorous songs and dances merry making and fun is now observed only for three days from 1-3 May. The AOs have another festival called **Tsungrem Mong** celebrated on the eve of harvest from 1 to 3 August. These festivals provide opportunities to the building generation and village stalwart to demonstrate their intellectual skill and physical powers.

The **Tokhu Emong** is the harvest festival of the **Lothas**. Tokhu Emong is celebrated on November 7, every year. The main features of the feast are community songs, dances, feast fun and frolic. Tokhu Emong is also a festival of thanksgiving, sharing and reconciliation but the most beautiful aspect of this festival is that past rancor's are forgiven, new ties are formed and bonds of closer intimacy are formed.

### 1.3 Geology & Mining:

The Directorate of Geology & Mining, Dimapur was established with a view to search and explore the existence of the mineral resources of this virgin part of the country, with the ultimate objective of their development for socio-economic benefit of the people of the state.

The minerals in order of their economic importance so far discovered and proved are petroleum and natural gas, nickel-cobalt-chromium, limestone, marble, coal, clay, slate, decorative and dimension stones, building materials and ground water resources.

#### Basic Functions of the Department:

- To search, explore and establish mineral available with an ultimate objective of utilization for socio-economic development of the people in harmony with natural ecology.
- To undertake various geo-scientific investigations for rural and urban development, civil construction, hydel project etc.
- Mineral Management, exploratory mining, liaisoning with ONGC and other exploratory agencies.
- Effective enforcement of the Nagaland Coal Mining Policy and Minor Mineral Concession rules
- To explore and develop ground water resources
- To implement various R&D projects relating to mineral developments, seismic surveillance and geo-technical related projects.

#### Geotechnical Investigation:

Several site suitability investigations were carried out for construction of multistoried commercial and residential buildings in and around Dimapur.

#### Ground Water sector:

The Department had carried out exploratory drilling of wells at few locations in hilly areas under Dimapur. The Department also carried drilling and construction of tube wells on the request of the user agencies.

Period	District	Exploration well	Deposit well	Total no. of well
April 2014 - Feb 2015	Dimapur	4	6	10

#### Achievement of the Department during 2014-15 in Water sample Analysis:

About 70 nos of samples collected from Dimapur area were analysed during 2014-15. The analysed results showed that some of the samples contain manganese (Mn) and Iron (Fe) above the permissible limit as per BUREAU of Indian Standard.

The **Chakhesang** community celebrate the **Suhkruhnye** festival on 15th January which is their most important festival. All the tribes celebrate their distinct seasonal festivals with much gaiety and community feasting.

Most of these festivals revolve round agriculture, since it is the main-stay of Naga society. Over 85% population of Nagaland is directly dependent on agriculture and lives in a thousand and odd villages situated on high hill tops or slopes overlooking verdant valleys humming with murmuring streams.

### **Climate**

Dimapur Climate is hot and humid in the plains during summer (reaching a maximum of 36 °C, with humidity up to 93%) while the winter months are cool and pleasant. The average annual rainfall is 1504.7 mm

### **Economy**

Besides being referred to as a gateway of Nagaland and Manipur, main commercial activities of the State, is centered around Dimapur.

### **Demographics**

According to the 2011 census Dimapur district has a population of 379,769 roughly equal to the nation of Maldives. This gives it a ranking of 563rd in India (out of a total of 640) Its population growth rate over the decade 2001-2011 was 0 % Dimapur has a sex ratio of 916 females for every 1000 males and a literacy rate of 85.44 %.

The District has a heterogeneous population with the majority comprising Naga tribes from all over Nagaland.

### **Flora and fauna**

In 1986 Dimapur district became home to the Rangapahar Wildlife Sanctuary, which has an area of 4.7 km<sup>2</sup> (1.8 sq mi).

### **Education**

The district has ample number of institutions devoted for providing quality education to the residents. Most schools have English as their medium of instruction and are affiliated to the Nagaland Board of School Education. Some prominent schools include Patkai School, Holy Cross School, St Paul Hr Sec School, Pranab Vidyapith, Government High School, M.G.M. higher secondary school etc.

National institute of technology (NIT Nagaland) is finally started at Chumukedima.

Colleges: Patkai Christian College (the only autonomous college in Northeast India), Dimapur Government College,, Public College of Commerce, S.D. Jain College, Pranabananda Women's College, Salt Christian College, Tetso College are a few among the 18 different Colleges in Dimapur. Hostel accommodation is also available in few Colleges.

### **Vocational Centres**

Women's Industrial Training Institute, Saithkima (WITI) run by the Dept. of Employment, besides many private IT institutions imparting vocational/skilled training.

### **Sports**

Dimapur is also home to Dimapur United a soccer club which plays in Nagaland Premier League.

### **How to Reach**

**By Air:** The state has its airport in Dimapur, which is regularly serviced by major airlines. The city is linked to the major Indian cities like Guwahati and Kolkata by air. Important places in the state are easily accessible from Dimapur.

**By Rail:** The major railhead in the state is Dimapur, which is linked to Guwahati, the gateway to the northeastern India. Guwahati is in turn connected to the rest of the country by important trains.

**By Road:** The National Highway 39 that connects Kohima, Imphal and the Myanmar border at Moreh runs through Dimapur.

## **1.1 Location & Geographical Area**

The district is bounded by Kohima district on the south and east, Karbi Anglong district of Assam on the West, the Karbi Anglong and stretch of Golaghat District of Assam, in the west and the north.

A large area of the District is in the plains with an average elevation of 260 m above sea level excepting the Medziphema sub-division and a few villages of Niland sub-division, which are located in the foothills. The total area of Dimapur is 927 km<sup>2</sup> (Source-Deptt. of Land Record & Survey). The district is bounded by Kohima District on the south and east; the Karbi Anglong and the DAB (Disputed Area Belt) stretch of Golaghat District of Assam, in the west and the north 25° 54' 45" N Latitude 93° 44' 30" E Longitude.

## **1.2 Topography**

A large area of the District is in the plains with an average elevation of 260 m above sea level excepting the Medziphema sub-division and a few villages of Niland sub-division, which are located in the foothills. Dimapur situated at 25° 54' 45" N Latitude and 93° 44' 30" E Longitude. Climate is hot and humid in the plains during summer (reaching a maximum of 36°C, with humidity Upto 93%) while the winter months are cool and pleasant. The average annual rainfall is 1504.7 mm

## 1.4. Forest

### Forestry in Dimapur District:

Before the state of Nagaland was separated from Assam, Dimapur Forest division was under Dhansiri valley forest division of Assam till the constitution of Naga Hills, separated from Assam in the year 1958 along with Tuensang and Mon area (NEFA). There is no Forest division worth name in Naga Hills except few Forest Offices viz. Rangapahar Range with Beat Offices under range at Dimapur and Nichugard (Chumukedima). Dimapur forest division as Kohima forest division came into being headed by a Deputy conservator of Forest with headquarter at Dimapur along with the creation of a new unit called Naga Hills Tuensang Area (NHTA) in the year 1961. The then Kohima forest division covers the present district of Kohima, Peren, Mokokchung, Zunheboto, Wokha, and part of Tuensang, Mon, Longleng and Kiphire with its range and Beat Offices at Rangapahar, Kohima, Nichugard (Chumukedima), Mokokchung and Naganimora for managing the reserved forests viz. Rangapahar R.F., Singphan R.F. and Intanki R.F.

### The forest type

Under the district is mostly Northern Tropical Semi Evergreen forest (2B). Forest cover of the district as per 2011 SFR report as follows:

1. Dense forest – 140.00 sq km (14000ha)
  2. Open forest – 266.00 sq km (26600ha)
  3. Scrub forest – 6.00 sq km (600ha)
  4. Non forest – 4.00 sq km (400ha)
- Total = 416.00 sq km (41600ha)

### Legal status of forest

1. Reserved forest – 62.26sq km (6226ha)
2. Purchased land – 8.1238 sq km (812.38ha)
3. Zoological parks – 4.700 sq km (470ha)

Total = 75.0838 sq km (7508.38ha)

### Constraints, Strategy and Action plan

The division with a total dense forest cover of 140 sq km includes reserved forest for 62.66 sq km and purchased land for 8.1238 sq km. However, land encroachment is the major problem. Community Wildlife Sanctuary and Community Botanical Garden through people and community participation in conservation of the rich natural resource of the district is the alternative for the land encroachment. Financial assistance is provided to villagers for planting of forest tree saplings.

Source: DFO, Dept of Forest, Dimapur

### **Medicinal and Aromatic plants**

There are a lot of medicinal plants locally available in the district and are being used by the local doctors called Kaviraj. Many of these have not been identified and documented so there is urgent need of identification and documentation of these potential sop. Some of the species cultivated of large scale include, Tulsi (Green and Black both), Chiraita (King leaf), Aloe-vera etc. Citronella / lemon grass are also being promoted for cultivation in the district during 2010-11

### **Area under different Medicinal and Aromatic plants**

Area under cultivation of aromatic and medicinal plants is 200 hectares and production is about 300 MT (Statistical Handbook of Nagaland- 2007)

### **Constraints, Strategy and Action plan-**

Lack of awareness of indigenous medicinal plants. Identification and documentation of indigenous medicinal plants must be taken care of. The climate and soil conditions are very much suitable for cultivation of Lemon grass. During 2001-02 many farmers have started cultivation of Lemon grass but stopped after 2 -3 years due to lack of processing units. So development of processing unit for extraction of Oil and Oleoresins are necessary for the promotion of medicinal and aromatic plants in the district. Patchouli and Vanilla are being promoted by Department of Land Resources, Govt. of Nagaland, Dimapur for cultivation in the district but due to lack of marketing and processing units the farmers are being discouraged so development of market infrastructure and marketing channels and processing unit for extraction of Oil and Oleoresins need to be taken care of.

### **1.5. Administrative set up**

Administratively, The government of Nagaland, for administrative purpose has established four sub-divisions; Nuland and Medziphema with Additional Deputy Commissioner as the administrative head and Kuhuboto and Dhansiripahar sub-divisions headed by Sub-divisional Officer. Also the district administrative headquarter is currently located at Dimapur, headed by the Deputy Commissioner. The new administrative complex that would also house the Deputy Commissioner Office is under construction at Chumukedima (about 20 km from Dimapur town).

#### **The Following officers are responsible for the running of district administration:**

1. The Deputy Commissioner (DC) at Dimapur heads the District.
2. Additional Deputy Commissioner (ADC) Headquarters at Nuland and Medziphema.
3. Sub-Divisional Officer SDO (C) Headquarters at Kuhuboto and Dhansiripar.
4. Extra Assistant Commissioner (EAC) Headquarters at Nihokhu and Rengmapani



## 2. District at Glance

Sl.No	Particular	Year	Unit	Statistics
1	Geographical features			
(A)	Geographical Data			
	i) Latitude			25°48' & 26°00' North latitude
	ii) Longitude			93°30' & 93°54' east
	iii) Geographical Area		Hectares	92700
(B)	Administrative units			
	i) Sub Divisions		Nos	4
	ii) Tehsil		Nos	2
	iii) Sub-Tehsil		Nos	3
	iv) Patwar circle		Nos	7
	v) Panchayat Simitis		Nos	Nil
	vi) Nagar Nigam		Nos	Nil
	vii) Nagar Palika		Nos	Nil
	viii) Gram Panchayats		Nos	219
	ix) Revenue Villages		Nos	219
	x) Assembly Area		Nos	5
2	Population		Total	379769
(A)	Sex -wise			
	i) Male (Urban)	2011	Nos	103662
	ii) Female (Urban)	2011	Nos	93615
(B)	i) Male (Rural)	2011	Nos	94501
	ii) Female (Rural)	2011	Nos	87991
3.	Agriculture			
A	Land utilization			
	i) Total Area	2011	Hectare	
	ii) Forest Cover	2011	Hectare	7208.38
	iii) Non Agriculture Land	2011	Hectare	
	iv) Cultivation Barren land	2011	Hectare	
4.	Forest			
	i) Forest	2011	Hectare	40100
5	Railways			
	i) Length of rail line	2010-11	Kms	Connecting 1) Guwahati & 2) Dibrugarh

6	<b>Roads</b>			
	a) National Highway	2010-11	Kms	52
	b) State Highway	2010-11	Kms	11
	c) Main District highway	2010-11	Kms	372.50
	d) other district	2010-11	Kms	100.82
	e) Rural Road/Agriculture marketing Board Roads	2010-11	Kms	271.86+71
	f) Kachacha Road	2010-11	Kms	685.18
7	<b>Communication</b>			
	a) Telephone connections	2010-11	Nos	15109
	b) Post offices	2010-11	Nos	53
	c) Telephone Centre	2010-11	Nos	10
	d) Density of Telephone	2010-11	Nos/1000 person	N/A
	e) Density of Telephone	2010-11	Nos/KM	N/A
	f) PCO	2010-11	Nos	1250
	g) PCO-STD	2010-11	Nos	1350
	h) Mobile	2010-11	Nos	25000
8	<b>Public Health</b>			
	a) Allopathic Hospital(District Hospital)	2010-11	Nos	1
	b) Beds in Allopathic Hospital	2010-11	Nos	261
	c) Ayurvedic Hospital	2010-11	Nos	0
	d) Beds in Ayurvedic Hospital	2010-11	Nos	0
	e) Unani Hospitals	2010-11	Nos	0
	f) Community Health centre	2010-11	Nos	60
	g) Primary Health Centre	2010-11	Nos	36
	h) Dispensaries	2010-11	Nos	4
	i) Sub-Health centres	2010-11	Nos	2
	j) Subsidiary Health Centre	2010-11	Nos	4
	k) Private Hospitals	2010-11	Nos	15
9	<b>Education</b>	2010-11	Nos	
	a) Primary School	2010-11	Nos	650
	b) Middle Schools	2010-11	Nos	300
	c) Secondary & senior Secondary Schools	2010-11	Nos	156
	d) Colleges	2010-11	Nos	18
	e) Technical university	2010-11	Nos	4

### 2.1. Existing Status of Industrial Areas in the District of Dimapur.

Sl	Name of Ind. Area	Land acquired in hectare)	No of allotted plots	No of units in production
1	Industrial Growth centre	345	2	2
2	NMTTC	4.47	-	-
3	V.H			20
4	IID Centre, Nuiland	50	100	60

## 3. Industrial Scenario of Dimapur

### 3.1. Industry at Glance

Sl.No	Head	Unit	Particular
1	Registered industrial unit	575 Nos	MSE Sector
2	Total Industrial unit	575 Nos	
3	Registered medium & large unit	No	12
4	Estimated average no of daily workers employed in small scale Industries	No	1250
5	Employment in large and Medium Industries	No	150
6	No of Industrial area	No	4
7	Turnover of small scale Industries	In lacs	4.50
8	Turnover of Medium & large scale Industries	In lacs	10.50

### 3.2 Year wise Trend of units Registered

Year	No of Registered units	Employment
2010-11	210	1050
2011-12	127	635
2012-13	148	740
2013-14	66	568
2014-15 (up to January 2015)	51	454
Total	602	3447

Source: - DIC, Dimapur

### 3.3. District Industries Centre

#### Introduction:

The District Industries Centre (DIC) plays a vital role in guiding the upcoming/ new entrepreneurs in setting up new industrial units as well as encouraging and assisting the functioning units in the district. The DIC assist the entrepreneurs in project report preparation and gives advice on feasibility and viability of the project whenever sought by the entrepreneurs. It also plays the role of facilitator in implementing different schemes, both state and central.

#### Structure:

The DIC, Dimapur is headed by the General Manager assisted by five functional Managers, inspectors, Extension Officers, ministerial staff and manual staff

#### Activities:

##### a) Registrations:

- Industrial units are registered under MSME for both manufacturing and service sector
- Registration of MSME part-I (provisional) is for setting up of a new unit and MSME part –II (permanent) is done after commercial production of the unit .

##### b) PMEGP:

For Generation of employment oppertunities both in rural and urban areas in the country PMEGP scheme was launched on 15<sup>th</sup> August 2008. Yearwise report is given below:

Sl. No	Year	Target	sanction	Yet to sanction	Returned from bank	Urban	Rural	Male	Female
1	2008-09	12	10	02	-	05	07	05	07
2	2009-10	18	16	02	-	08	10	09	09
3	2010-11	38	30	08	-	20	18	24	14
4	2011-12	20	18	01	01	12	08	11	09
5	2012-13	30	21	06	03	15	15	23	07
6	2013-14	42	25	07	10	21	21	29	13
7	2014-15	80	41	30	9	70	10	54	26
	Total	240	161	56	23	151	89	155	85

#### C. Subsidies:

Subsidies can be classified into (i) Central & (ii) State

##### (i) Central subsidies:

- Transport subsidy/Freight subsidy
- Central Capital Investment subsidy
- Interest subsidy

##### (ii) State Incentives

- Manpower subsidy
- Power subsidy
- Power drawal subsidy



**D. Training:**

Sl.No	Trade	Intake	Duration	Stipend
1	Weaving	15	1 year	Rs.500 per month/trainee
2	Automobile	15	9 months	Rs.500 per month/trainee
3	Radio Mechanic	10	9 months	Rs.500 per month/trainee
4	Welding	15	9 months	Rs.500 per month/trainee

**E. Weavers Credit Card(WCC)**

- To provide adequate and timely assistance to the weavers from the banking institutions, WCC scheme is introduced in 2012
- Altogether 1250 numbers of applications are forwarded to respective banks for Consideration

**F. Year of Entrepreneurs(YOE):**

Year of the Entrepreneur was launched by the State Government in 2010 to facilitate the educated unemployed youth of the State. Altogether, a total of 200 is set for Dimapur district of which almost all the cases are covered.

**G. National Mission on Food Processing:**

The main objective of the scheme is to increase the level of processing, reduction of wastage, value addition, enhance the income as well as increase exports.

The scheme envisages to extend financial assistance for setting up of new food processing units as well as technological up gradation and expansion of existing units.

The District Industries Centre, Dimapur has forwarded the cases of eligible entrepreneurs to the Mission Director, Nagaland for availing these facilities.

**H. Achievements of DIC, Dimapur:**

- Under PMEGP almost all the target has been met
- Revenue collected from Registration of MSME Part-I & Part -II : Rs 26,93,200/-

**Details of Existing Micro & Small Enterprises and artisan units in the District as per NIC Code for the year 2014-15 (till January 2015)**

Sl.No	NIC 2004	DESCRIPTION	Number of units	Investment (lacs)	Employment
1	1	Agriculture, Hunting and Related Service Activities	2	3	7
2	2	Forestry, Logging and Related Service Activities			
3	5	Fishing, Aquaculture and Service Activities Incidental to Fishing			
4	10	Mining of Coal and Lignite; Extraction of Peat			
5	11	Extraction of Crude Petroleum and Natural Gas; Service Activities incidental to Oil and Gas Extraction, excluding Surveying			
6	12	Mining of Uranium and Thorium Ores			
7	13	Mining of Metal Ores			
8	14	Other Mining and Quarrying			
9	15	Mfg of Food Products and Beverages	3	20	36
10	16	Mfg of Tobacco Products			
11	17	Mfg of Textiles			
12	18	Mfg of Wearing Apparel; Dressing and Dyeing of Fur	3	24	30
13	19	Mfg of Leather & Leather Product			
14	20	Mfg of Wood and Wood Products			
15	21	Mfg of Paper and Paper Products			
16	22	Publishing, Printing & Reproduction of Recorded Media	2	14	15
17	23	Mfg of Coke & Refined Petroleum Products and Nuclear Fuel			
18	24	Mfg of Chemicals and Chemical Products			
19	25	Mfg of Rubber and Plastics Products			
20	26	Mfg of Other Non-Metallic Mineral Products			
21	27	Mfg of Basic Metals			
22	28	Mfg of Fabricated Metal Products	13	68	105
23	29	Mfg of Machinery and Equipment n.e.c.			
24	30	Mfg of Office, Accounting & Computing Machinery			
25	31	Mfg of Electrical Machinery and Apparatus n.e.c.			
26	32	Mfg. of Radio, Television and Communication Equipment and Apparatus			
27	33	Mfg of Medical, Precision and Optical Instruments, Watches and Clocks			
28	34	Mfg of Motor Vehicles, Trailers and Semi-Trailers			
29	35	Mfg of Other Transport Equipment			
30	36	Mfg of Furniture; Manufacturing etc.	7	40	42
31	37	Recycling			

32	40	Electricity, Gas, Steam and Hot Water Supply			
33	41	Collection, Purification and Distribution of Water			
34	45	Construction	1	15	13
35	50	Repair & Maintenance of Motor Vehicle, Retail Sale of Automotive Fuel	1	15	7
36	51	Wholesale of Trade and Commission Trade			
37	52	Repair & Maintenance of Personal & Household Goods; Retail Trade			
38	55	Hotels and Restaurants	1	12	12
39	60	Land Transport; Transport via Pipelines			
40	61	Water Transport			
41	62	Air Transport			
42	63	Supporting & Auxiliary Transport & Travel Agents Activities			
43	64	Post and Telecommunications			
44	65	Financial Intermediation, Except Insurance & Pension Funding			
45	66	Insurance and Pension Funding, Except Compulsory Social Security			
46	67	Activities Auxiliary to Financial Intermediation			
47	70	Real Estate Activities			
48	71	Renting of Machinery & Equipment Without Operator & of personal & House Hold goods			
49	72	Computer and Related Activities			
50	73	Research and Development			
51	74	Other Business Activities	5	60	39
52	75	Public Administration and Defense; Compulsory Social Security			
53	80	Education	2	28	12
54	85	Health and Social Work	1	7	6
55	90	Sewage and Refuse Disposal, Sanitation and Similar Activities			
56	91	Activities of Membership Organization etc.			
57	92	Recreational, Cultural and Sporting Activities			
58	93	Other Service Activities	10	46	130
59	95	Activities of Private Households as Employers of Domestic Staff			
60	96	Undifferentiated Goods - Producing Activities of Private Households for Own Use			
61	97	Undifferentiated Service - Producing Activities of Private Households for Own Use			
62	99	Not Reported			
		Total	51	349	454



### **3.4 Large scale Industries/Public sector undertakings**

#### **List of the unit's in Dimapur District & nearby area:**

1. Cement corporation of India, (A Govt. Of India Undertaking), Bokajan, Karbi Anglong, Assam.
2. NEPCCO Ltd, Nagarjan, Dimapur-797112, Nagaland
3. BSNL Ltd, Super Market, Dimapur-797112, Nagaland
4. Regional office, SBI, Super market, Dimapur-797112, Nagaland
5. Indian Oil Company, Signal Angami Colony, Dimapur-797112, Nagaland
6. Dimapur Milk co-operative Society, 7<sup>th</sup> Mile, Dimapur-797112, Nagaland
7. Army canteen Supply, Signal Bosti, Dimapur-797112, Nagaland
8. Amar flour Mill, Golaghat Road, Dimapur-797112, Nagaland

#### **3.5 Major Exportable item: -**

Naga chili, Ginger, Soya bean, Bamboo products, Cane products, pets products, etc

#### **3.6 Growth Trend:**

The growth trend of Dimapur is fast in handloom, food processing, printing ,bamboo ,wood work etc. . Also Dimapur is a commercial place in Nagaland. The villages in & around Dimapur is also developing in agriculture and industry wise also.

#### **3.7 Vendorisation /Ancillarisation of the Industry:**

- Growth Centre and Export Development at Ganesnagar, Dimapur.

Also having Public sector undertakings & Large units like Cement Corporation of India, Karbi Anglong , BSCL ,IOCL, Army Canteen Supplier , Amar Flour Mill etc. there is a good scope for MSE units for ancillarisation.

#### **3.8 Medium scale Enterprises:**

- Dimapur Polymer LLP, Old Industrial Estate manufacturing PVC products
- Plaza Bakery unit, Dimapur
- Breezed Bakery unit, Dimapur
- Greenfields Agro Enterprise, Darogapathar village, Dimapur manufacturing Agro products are few medium scale enterprises.

#### **3.9 Service Enterprises:**

Automobile servicing, Mobile repairing, Tailoring, Hotels, Tyre Retreading, Computer Hardware & Networking, Photo Studio etc.

#### **3.10 Potential for new MSMEs:**

The district of Dimapur is considered backward as far as Industrial Activity is concerned. Traditionally, the people in the district work on metal & wood with simple technology but most of the production is meant for household needs and requirement. Basketry, weaving, wood carving, pottery, Spinning and Carpentry are traditionally activities in which a sizeable number of the local people are skilled.

**Engineering based:**

- a) Fabrication of grills, iron gates etc
- b) Repairs to machinery
- c) Motor works
- d) Printing press
- e) Barbed Wire
- f) Agricultural Implements
- g) Tin-smithy
- h) Wax candle
- i) Washing Soap

**Demand based:-**

- a) Auto repair works
- b) Confectionery unit
- c) Electrical Repair unit
- d) Pickle making
- e) Fish dry making
- f) Cyber café
- g) Internet service unit
- h) Green vegetables shop etc

The District Industries Center needs to be strengthened extension work achieve the growth envisaged by exploiting the estimated potential. The present position in regard to the infrastructure available in terms of training centers, road networks, services centers, etc is inadequate and need to be augmented to bring about appositve change in the climate. At present, the district has the following networks of centers/units.

- |   |   |
|---|---|
| 1. Citronella distillation unit-        | 1 |
| 2. Citronella demonstration unit-       | 1 |
| 3. Rural artisan project training unit- | 1 |
| 4. Barbed wire and wire nails units     | 2 |
| 5. Steel trunk                          | 5 |
| 6. Mini Cement plant                    | 1 |



To encourage prospective entrepreneurs to take up industrial activities, there are provisions to provide margin money/ seed money/ subsidy by the implementing agencies. However there are several constraints that may be highlighted are:-

- a) Lack of basic infrastructure facilities, in-adequate marketing support/ accessibility and raw material supply.
- b) In-adequate power supply
- c) Shortage of skilled /trained manpower
- d) Lack of industrial experience, non-availability of managerial, administrative and technical experience among the local entrepreneurs.
- e) High cost raw materials and transportation
- f) Lack of co-ordination among various development agencies
- g) Credit flow is very low due to poor return of bank loans.

**Credit programme for the year 2014-15 in Dimapur district.**

The credit programme for the year 2014-15 is estimated as shown below(in lacs)

District	No of brs	Crop loan	ATL	Total Agr	SME	OPS	TPS	NPS	GT
Dimapur	55	1864.00	3091.00	4955.00	7300.00	11150	23405	7650	31055

**Banking Facilities in Dimapur District:-**

Sl.No	Name of Bank	Nos
1	ALLAHABAD BANK	2
2	AXIS BANK	3
3	BANK OF BARODA	1
4	Bank of India	1
5	Bank of Maharashtra	1
6	CANARA BANK	1
7	CENTRAL BANK OF INDIA	1
8	Corporation Bank	1
9	Federal bank	1
10	HDFC BANK	1
11	ICICI BANK	2



12	IDBI BANK	1
13	Indian bank	1
14	Indus Ind Bank	1
15	Indian Overseas bank	1
16	Punjab National bank	1
17	Punjab & Sind Bank	1
18	STATE BANK OF INDIA	13
19	SIB	1
20	Syrian Bank	1
21	United Bank of India	2
22	United Commercial Bank	4
23	Union Bank	1
24	Vijaya Bank	2
25	YES Bank	1
26	<i>NAGALAND RURAL BANK, KOHIMA</i>	4
27	THE NAGALAND STATE CO-OPERATIVE BANK LTD	5
	<b>TOTAL</b>	<b>55</b>

Source: - SLBC, Nagaland

#### 4. Existing clusters of Micro & Small Enterprises :

##### 4.1. Detail of major cluster:

##### 4.1.1 :Manufacturing Sector:

- Handloom cluster at Dhanshiripar
- Export Park in Ganesnagar
- Old & New Industrial Area
- MIC Tuluvi area etc.

##### 4.1.2 Service Sector:

- 4<sup>th</sup> Mile
- 2 ½ Mile
- Nutonbosti
- Duncan Bosti
- 6<sup>th</sup> Mile etc.

#### 4.2: Details of Identified Cluster:

##### 4.2.1 Name of the Cluster: - Cement Craft

<b>1</b>	<b>Principal products Manufactured in the cluster</b>	<b>Pot, Vase, Cement Jally, Decorative Design items etc</b>
<b>2.</b>	Name of the cluster	Cement craft cluster at Dimapur
<b>3.</b>	No of functional units in the clusters	25 Nos
<b>4.</b>	Turnover of the clusters	1.5 lacs
<b>5.</b>	Value of exports from the clusters	Nil
<b>6.</b>	Employment in clusters	60 Nos
<b>7.</b>	Average investment in plant & Machinery	1.5 lacs
<b>8.</b>	Major issues/ requirement	Design, Technology, Capacity building etc
<b>9</b>	Presence of capable institutions	KVIC, Dimapur, NEIST, Jorhat, CGSRI, Kolkata, Br. MSME-DI, Dimapur
<b>10</b>	Thrust Areas	Capacity building, Design, New technology transfer, Financials loan etc
<b>11</b>	Problems & Constraints	Lack of New Technology, Loan, power etc

##### 4.2.2 .Name of the cluster: Cane & Bamboo cluster

<b>1</b>	<b>Principal products Manufactured in the cluster</b>	<b>Cane Chair, tables, Bamboo mat, Basket, Bag etc</b>
<b>2</b>	Name of the cluster	Cane & Bamboo cluster at Chumukedima
<b>3</b>	No of functional units in the clusters	25 nos
<b>4</b>	Turnover of the clusters	1.5 lac
<b>5</b>	Value of exports from the clusters	Nil
<b>6</b>	Employment in clusters	50 Nos
<b>7</b>	Average investment in plant & Machinery	1.00 lacs
<b>8</b>	Testing Area	Artistically works, bamboo works etc
<b>9</b>	Thrust Areas	Thrust building, new design, quality etc
<b>10</b>	Access to export market	Nil

##### 4.2.3. Fabrication and general Engg cluster: - Steel Fabrication cluster at Dimapur

<b>1</b>	<b>Principal products Manufactured in the cluster</b>	<b>Grill, Gate, Shutter,</b>
<b>2</b>	Key trade Association address	Steel Fabrication Association, Purana Bazaar, Dimapur
<b>3</b>	No of functional units in the clusters	25 Nos
<b>4</b>	Turnover of the clusters	1.5 lacs
<b>5</b>	Value of exports from the clusters	Nil
<b>6</b>	Employment in clusters	60 Nos
<b>7</b>	Average investment in plant & Machinery	3.0 lacs
<b>8</b>	Testing Area	Quality, Capacity building
<b>9</b>	Major issues	Design, technology, loan
<b>10</b>	Access to export market	Nil

#### 4.2.7 Name of Cluster: Tea Processing Cluster at Dimapur

1	Principal products manufactured in the Cluster	Hand loom products
2	Name of the SPV	Nagaland Tea plant association, Dimapur
3	No of Functional units in the cluster	25 Nos
4	Turnover of the clusters	1.40 laKHS
5	Value of Exports from the cluster	nIL
6	Employment in cluster	1000
7	Average investment in plant & Machinery	12.0 lakhs
8	Major issues / requirements	New Technology, Packaging, Finance, capacity building, CFC, etc
9	Presence of capable Institutions	Tockhalay Tea Research Institute, Jorhat, NEIST, Jorhat
10	Thrust areas	Training, Export, New technology, thrust building etc
11	Problems & constraints	Financials, New technology, lack of training etc

#### 4.2.8 Name of Cluster: Handloom Cluster

1	Principal products manufactured in the Cluster	Hand loom products
2	Name of the SPV	Nagaland Khadi Udyog bhandar, Dhobi-nulla, Dimapur
3	No of Functional units in the cluster	20
4	Turnover of the clusters	1.40 Crores
5	Value of Exports from the cluster	
6	Employment in cluster	Approx. 1062
7	Average investment in plant & Machinery	120 crore
8	Major issues / requirements	
9	Presence of capable Institutions	
10	Thrust areas	
11	Problems & constraints	Raw materials, Financials etc

Remarks:- KVIC, Dimapur completed the cluster.

### **5.0 Activities carried out in Dimapur District by Nagaland Bamboo Development Agency , 6<sup>th</sup> Mile, Dimapur during 2014-15:**

The State announced its bamboo policy on 15<sup>th</sup> March 2004 and with it the Nagaland Bamboo Development Agency (NBDA) was established during 2004-05 with the motive to undertake and oversee the development of bamboo in the State both as a resource and as an enterprise.

The Agency is implementing bamboo development programmes and projects with the assistance from Government of India through the National Bamboo Mission , National Mission on Bamboo Applications, State Government and also institutions within the country and abroad.

The Policy seeks to develop Bamboo in Nagaland as:

- Resource
- Enterprise

#### **Resource Development Activities 2014-15:**

The agency so far has undertaken bamboo plantation under NBM scheme covering an area of 600 Hectares covering total of 34 villages in the district and existing stock management of 360 Hectares covering total of 30 villages and a High density scientific plantation demonstration plot at Jarnapani for the year 2014-15

### Enterprise Development Activities 2014-2015

Sl.No	Particulars	unit
1	Bamboo Furniture Training	2
2	Bamboo Handicraft	2
3	Bamboo Construction	1
4	Training on Handicraft to specially abled people	1
5	Training on Handicraft to Deaf & Dumb biblical ministry	1
6	Review Meeting with bamboo entrepreneurs at NBRC	1
7	Retail outlets	2
8	Participation in Republic Day and Independence Day Celebration	1
9	Clearance sale day at NBRC	1
10	Hornbill Bamboo Carnival	1
11	Product and skill Development with N.I.D , Bangalore under N.B.M scheme at NBRC	1

### 6.0 General issues raised by industry associations during the course of meeting

1. Non- reorganization of EM-II acknowledgment by some of the state government agencies.
2. Re-constitution of MSEFC in the state of Nagaland at the earliest.
3. CLCSS
  - I. lack of awareness among branch level bankers.
  - II. There should be some mechanism for tracking of application status, so that the Entrepreneur gets present status of their application.
4. Bankers avoid accepting the cases under CGTMSE especially for the new Entrepreneurs and insist for the collateral security.
5. Mudra bank for Micro finance can help the SME units.

### 7.0 Prospects of training programme during 2014-15

#### A- IMC-

Sl.No	Date	No of Person Trained																Venue	
		SC		ST		PH		Min		ES		OBC		Oth/Gen		Total			GT*
		M	F	M	F	M	F	M	F	M	F	M	F	M	F	M	F		
1.	26.9.14	-	2	5	21	-	-	-	2	-	-	-	-	-	5	5	30	35	Prodigals Home, Dimapur

#### B- Two week EDP:

Sl No	Duration and Venue	No of Person Trained																
		SC		ST		PH		Min		ES		OBC		Oth/Gen		Total		GT*
		M	F	M	F	M	F	M	F	M	F	M	F	M	F	M	F	
1.	18-9-14 to 30-09-14 at B- MSMEDL Dimapur	0	0	9	13	-	-	-	-	-	-	-	-	0	-	9	13	22



**C- Six week ESDP :**

Sl No	Name of program e	Date and Venue	No of Person Trained																GT*
			SC		ST		PH		Min		ES		OBC		Oth/Gen		Total		
			M	F	M	F	M	F	M	F	M	F	M	F	M	F	M	F	
1.	Mobile Phone Repairing	10.09.14 to 28.10.14 at Khermal, DIMAPUR	1	0	19	1	0	0	0	0	0	0	0	0	2	0	22	1	23
2.	DTP & Screen Printing	15-9-14 To 30-10-14 at Batacherli Dimapur	0	0	8	5	0	0	0	0	0	0	3	4	4	1	15	10	25
3.	Advance Java	22.09.14-31.10.14 at Bata Charli, Dimapur	--	-	8	8	-	-	-	-	-	-	-	-	3	1	11	9	20
4.	Basic Welding	27.10.14-05.12.14 at NTTC, Dimapur	-	-	18	-	-	-	-	-	-	-	-	-	2	-	20	0	20

26

**D- One week MDP on financial management: |**

Sl No	Duration and Venue	No of Person Trained																GT*
		SC		ST		PH		Min		ES		OBC		Oth/Gen		Total		
		M	F	M	F	M	F	M	F	M	F	M	F	M	F	M	F	
1.	15-9-14 to 19-09-14 at Pinnacle, Dimapur	-	-	12	8	-	-	-	-	-	-	-	-	1	-	13	8	21

**8.0 Action plan for MSME Schemes**

Sl.No	Name of the Scheme	Proposed activity on the Scheme
1	MSE-CDP	
2	ISO-9000/14000/HACCP reimbursement	2 Nos of MSEs will be motivated for obtaining the benefit under the scheme
3	MSE-MDA	2 Nos of cases to be processed
4	CLCSS	3 Nos of MSEs will be motivated for obtaining the benefit under the scheme
5	Capacity Building & strengthening of data base	01 proposal of registered association will be forwarded for strengthening of data base
6	International cooperation	01 proposal is to be forwarded for an exposure visit
7	TREAD for women	01 proposal will be persuaded under the scheme
8	VDP	01 No of state level VDP with PSUs/large Govt organization for the benefit of local industry

1. The first part of the report discusses the general situation of the company and the results of the previous year. It also mentions the main objectives for the current year.

2. The second part of the report describes the progress made in the various departments. It includes a detailed analysis of the financial results and the operational performance.

3. The third part of the report discusses the challenges faced by the company and the strategies adopted to overcome them. It also mentions the achievements of the company in the current year.

4. The fourth part of the report discusses the future prospects of the company and the plans for the next year. It includes a detailed analysis of the market trends and the competitive environment.

5. The fifth part of the report discusses the role of the management and the employees in the success of the company. It also mentions the initiatives taken to improve the performance of the company.

6. The sixth part of the report discusses the financial results of the company for the current year. It includes a detailed analysis of the income statement, the balance sheet, and the cash flow statement.

7. The seventh part of the report discusses the operational performance of the company for the current year. It includes a detailed analysis of the production, sales, and distribution of the company's products.

8. The eighth part of the report discusses the challenges faced by the company in the current year and the strategies adopted to overcome them. It also mentions the achievements of the company in the current year.

9. The ninth part of the report discusses the future prospects of the company and the plans for the next year. It includes a detailed analysis of the market trends and the competitive environment.

10. The tenth part of the report discusses the role of the management and the employees in the success of the company. It also mentions the initiatives taken to improve the performance of the company.

9	National awards	03 numbers of MSMEs will be persuaded
10	NMCP Schemes	
	i) Lean manufacturing	01 No Awareness programme for MSMEs
	ii) Design clinic	01 No Awareness programme for MSMEs
	iii) Market assistance & Tech. up gradation	01 No Awareness programme on packaging
	v) QMS/QT	01 No Awareness programme for MSMEs
	vi) Tech & quality up gradation support	01 No Awareness programme for MSMEs
	vii) ICT	01 No Awareness programme for MSMEs
	viii) Bar code	01 No Awareness programme for MSMEs
	ix) IPR	01 No Awareness programme for MSMEs
	x) Incubator scheme	Proposal for setting up of incubator from a technical institution will be persuaded

#### 9.0 Steps to set up MSMEs

Sl.No.	Type of Assistance	Institutions
1	Provisional Registration Certificate (EM-I) & Permanent Registration certificate(EM-II)	District Industries centre, Dimapur Ph :03862-229434
2	Identification of project profiles, techno-economic and managerial consultancy services, market survey and economic survey	Br. MSME Development Institute, Industrial Estate, Dimapur – 797113 Ph:03862-248 552
3	Land & Industrial shed	Nagaland Industrial Development Corporation, Opp. Naga Shopping Arcade, Dimapur – 797112, Ph. No. 03862-226473
4	Financial Assistance	a) North Eastern Development Financial Institution, (Branch Office) Supply colony, Dimapur – 797112 Ph. No. 03862-235030
		b) Nagaland Industrial Development Corporation, Opp. Naga Shopping Arcade, Dimapur – 797112 Ph. No. 03862-226473



		c) Small Industries Development Bank of India, NIDC Complex Dimapur – 797112 Ph. No. 03862-234820 d) National Bank for Agriculture & Rural Development, Circular Road, Khermahal, Dimapur – 797112 e) State Bank of India and Other Nationalized Banks
5	For raw materials under Govt Supply	<i>Nagaland marketing &amp; raw material supply corporation, Dimapur</i>
6	Plant & machinery under hire/purchase basis	<i>NSIC,DIC Campus, Half Nagarjan ,Dimapur</i>
7	Power/Electricity	<i>Department of Electricity, Nagaland Kohima</i>
8	Technical Know-how	a) <i>Br.MSME-Development Institute, Dimapur-797 113</i> b) <i>District Industries centre,6<sup>th</sup> mile Dimapur-797 112</i>
9	Quality & standard	<i>Bureau of Indian Standards, Guwahati</i>
10	Marketing /Export Assistance	<i>Nagaland marketing &amp; raw material supply corporation ,Dimapur</i>
11	Other promotional agencies	1) <i>Khadi &amp; Village Industries Commission, Super market complex,Dimapur-797112 Ph: 03862-226546</i> 2) <i>Khadi &amp; Village Industries Board New Secretariat complex, Kohima-797001 PH: 0370-2270013</i> 3) <i>Nagaland Bamboo Development Agency,6<sup>th</sup> mile,Dimapur-797112 Ph:03862-240217</i>

**10.0 Additional information if any:**

- Nagaland Government has constituted Mineral and Coal Extraction Policy 2013-14
- Food Park proposal submitted by the state government to the Govt. of India under progress
- Rail connectivity from Diphu to Zupza, Kohima under progress.



Along with traditional activities, The DIC, Dimapur can introduce new Schemes for the benefits of Entrepreneur, to take up programmes for up-gradation of new Technology under M/o MSME, Govt. of India like MSE-CDP, MSE-MDA, TREAD for women, Lean manufacturing, Design clinic, ICT, Bar Code, IPR etc in long run.

Development of agro-processing units like extraction of fibres from pineapple leaves, dehydration unit for ginger and cardamom, extraction of citronella oil are some potentials non-farm activities, which can be developed in the district. New scheme are patchouli cultivation, Tea garden and vanilla cultivation in the district. On the basis of availability of raw material, labour and other infrastructure, non-farm sector investment in the district can be in the following areas:-

**Agro-based.**

- a) Rice Mill    b) Ginger processing (dehydration plant)
- b) Fruit/vegetable preservation/canning centre
- c) Starch production unit
- d) Poultry/ cattle feed plant
- e) Patchouli, Ginger, Tea garden, Vanilla etc
- f) Food processing products etc    g) Piggery farm
- g) Soya milk and toffee processing unit
- h) Potato and Banana chips processing unit
- i) Pop corn making unit
- j) Pineapple juice & packing unit
- k) Passion fruits extraction & packing unit

**FOREST based:**

- a) Agarbati bamboo sticks    b) Furniture making    c) Cane and bamboo unit
- d) Handicrafts    e) wood curving    f) Broom unit
- g) Ayurvedic Medicine    h) bamboo Mat    Door & window frame
- i) Floriculture

**Mineral –based:-**

- a) Stone crushing    b) Stone cutting & polishing    c) Stone curving
- d) Boulder mall.    E) Stone dressing    f) cement Jally & other products
- g) Pottery    i) Brickfield

**Textile based:-**

- a) Tailoring unit    b) wool weaving unit    c) Hand loom unit
- d) Thread making unit    e) Ready-made garments unit



4.2.4 Name of the cluster: - Handloom cluster

<b>1</b>	<b>Principal products Manufactured in the cluster</b>	<b>Cloths, Cot, shawls, Mekila</b>
<b>2</b>	Name of the Association	Handloom cluster at Nagajan,Dimapur
<b>3</b>	No of functional units in the clusters	20 Nos
<b>4</b>	Turnover of the clusters	1.00 lacs
<b>5</b>	Employment in clusters	65 Nos
<b>6</b>	Average investment in plant &Machinery	2.0 lacs
<b>7</b>	Major issues	Design, new technology, Thrust building
<b>8</b>	Access to export market	Nil

4.2.5 Name of the cluster: - Food Processing cluster

<b>1</b>	<b>Principal products Manufactured in the cluster</b>	<b>Pineapple, orange, Guava, Bamboo shoot, Jack fruit, Mango etc</b>
<b>2</b>	Name of the Association	Food processing cluster at Pudamphuri
<b>3</b>	No of functional units in the clusters	15 Nos
<b>4</b>	Turnover of the clusters	2.0 lacs
<b>5</b>	Employment in clusters	50 Nos
<b>6</b>	Average investment in plant & Machinery	1.50 lacs
<b>7</b>	Major issues	New technology, Thrust building, Packaging, Finance, Infrastructure etc
<b>8</b>	Access to export market	Nil

4.2.6 Name of the cluster: - Stone curving Cluster

<b>1</b>	<b>Principal products Manufactured in the cluster</b>	<b>Stone Chips, Stone Block, Stone Curving Work etc</b>
<b>2</b>	Name of the Association	Stone Crusher cluster at Chumukedima
<b>3</b>	No of functional units in the clusters	25 Nos
<b>4</b>	Turnover of the clusters	1.50 lacs
<b>5</b>	Employment in clusters	40 Nos
<b>6</b>	Average investment in plant &Machinery	5.0 lacs
<b>7</b>	Major issues	New technology, Thrust building, Capacity Building, Finance, Transportation , Power etc
<b>8</b>	Access to export market	Nil

