



सत्यमेव जयते

Government of India
Ministry of MSME

Brief Industrial Profile of Kiphire District, Nagaland State

Year : 2015



MICRO, SMALL & MEDIUM ENTERPRISES

सूक्ष्म, लघु एवं मध्यम उद्यम

Carried out by

GOVERNMENT OF INDIA

MINISTRY OF MICRO, SMALL & MEDIUM ENTERPRISES

Br. MSME-Development Institute,

Old INDUSTRIAL ESTATE, DIPHU ROAD, DIMAPUR-797112 Nagaland

Phone No.03862-248552 E-mail: brdcdi-dima@dcmsme.gov.in

714
ADL(HJ)

Section 90 Dir (UCS)
Diary No.
Date 8/4/2015

CONTENTS

Content No.	Topic	Page No
	Forward	3
	Map of Nagaland & Kiphire District	4
1	General characteristics of the District	5-11
1.1	Location & Geographical Area	12
1.2	Topography	12
1.3	Availability of Minerals	13
1.4	Forest	13
1.5	Administrative set up	13-14
2	District at a Glance	14-15
2.1	Existing Status of Industrial Area in the District	15
3	Industrial Scenario of Kohima District	
3.1	Industry at a Glance	16
3.2	Year wise Trend of Units Registered	17
3.3	Details of Existing Micro & Small Enterprises & Artisan Units	18-19
3.4	Large Scale Industries/ Public Sector Undertakings	20
3.5	Growth Trend	20
3.8.2	Major Exportable item	21
3.10	Potentials of new MSMEs	21-22
4.2	Details of identified cluster	23
4.3	General issue raised by industry association during the course of meeting	24
5	Banks in Kiphire Dist	24
6	Action Plan for MSME Scheme during 2015-16	25
7	Steps to set up MSMEs	26
8	Additional information if any	26

FOREWORD

In pursuance of action plan target for the year 2014-15 it was decided to prepare the District Industrial Profile Report of Kiphire District with a view to reaching the goals and meeting aspiration envisaged in the plan. A detailed survey of the district was carried out and comprehensive data from various Government agencies like District Industries & Commerce Centre, District Lead Bank (SBI), Nagaland Industries Development Corporation (NIDC), District Statistical Office, District Forest Office, Employment Office, District Agriculture Office, District Fishery Office, NABARD Employment Office and Financial Institutions etc. were collected. The study has not only analyzed the existing industrial set up but also the prospects of future industrial development in the district.

It is hoped that this report will come in handy not only to existing and prospective entrepreneurs but also to various institutions, which are directly or indirectly connected with the industrial development of the district. Preparation of this report has been possible only by obtaining valuable information from various Government and Non-Government organization during the course of survey. To all these organizations, Br. MSME-Development Institute, Dimapur express its grateful acknowledgement for information made available.

The Methodology adopted for the survey report consists of desk survey, documentation of information and data from the reports/records of the Government Departments. The co-operation extended by various Government and Semi-Government organizations like DI&CC, District Lead Bank, NIDC, District Forest Office, District Fishery Office, NABARD, District Sericulture Office, Employment office, District Supply Office and Financial Institutions etc. is thankfully acknowledged.

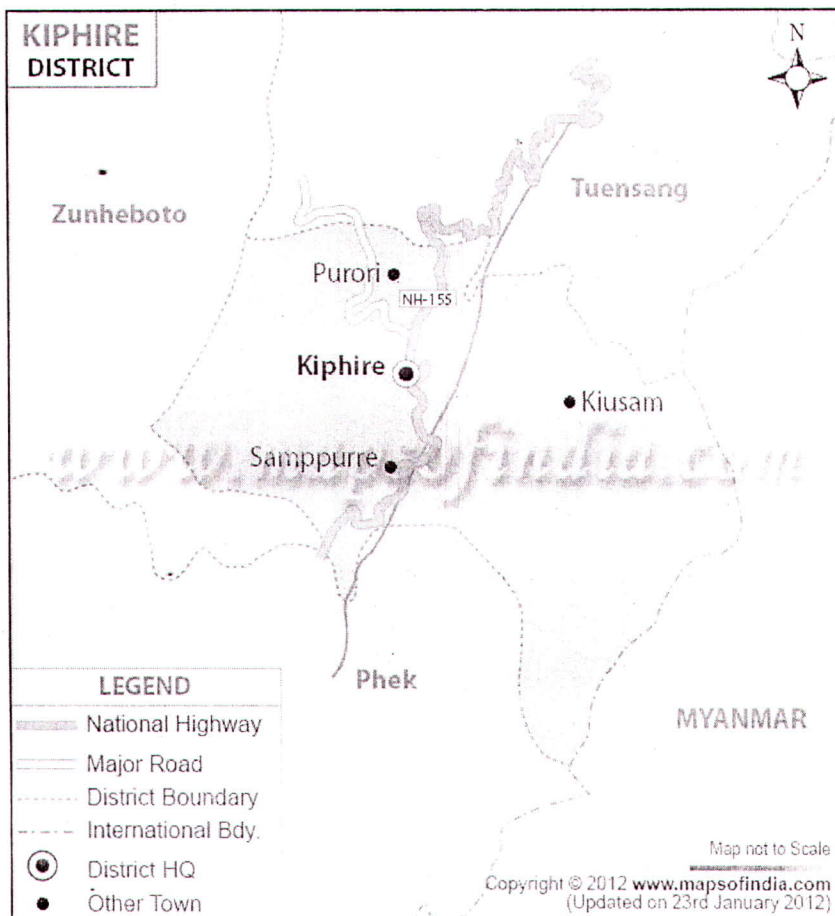
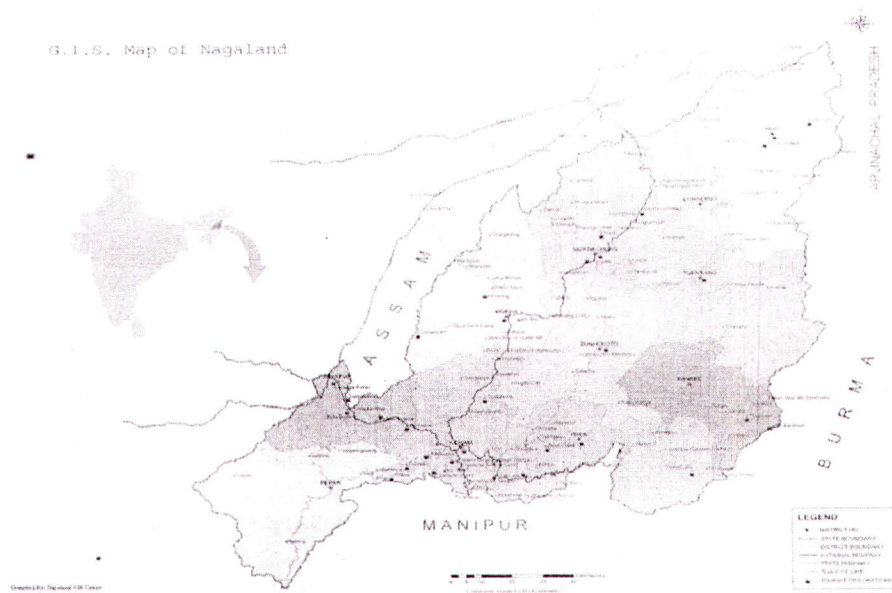
I would like to make a special mention of Sri M.Govindaraj, Assistant Director (Mech) , Sri B.M.Saxena , Assistant Director (Elec) for the strenuous work in the final preparation of this survey report.

Dimapur

Date: - 12-3-2015


(Tai Longchar)
Deputy Director I/C
Dy. Director I/c
Br. MSME, D-I, Min. of MSME
Govt. of India, Dimapur

G.I.S. Map of Nagaland



1.General Characteristics of Kiphire District

Geography .

It is bounded by Tuensang District in the north, Phek District in the west and Myanmar in the east. It is headquartered at Kiphire, which is at an altitude of 896 m above sea level. The major cities of this district are Seyochung, Sitimi, Pungro and Kiphire. Saramati (3,841 m), highest peak in Nagaland, is located in this district. Kiphire also has an earth station. Kisatong village is another tourist destination in the district.

Area

The Total Area of the District is 1255 sq. Kms.

History

Kiphire District, which was a part of Tuensang district for years, remains untouched by the British colonial administration even after its subjugation in 1920s. Though it was included within the category of Naga tribal areas under Assam and placed under political control, practically, there was neither sign of either political control nor any administration till the transfer of power in 1947.

In the wake of expansion of civil administrative out-posts, survey for opening of Administrative headquarters was done in 1951. An administrative headquarters was established at Kiphire on 16th June 1952. Initially, land was donated by Kiphire village and subsequently the nearby villages followed suit. Thus, the present Kiphire town came into the present shape.

Climate

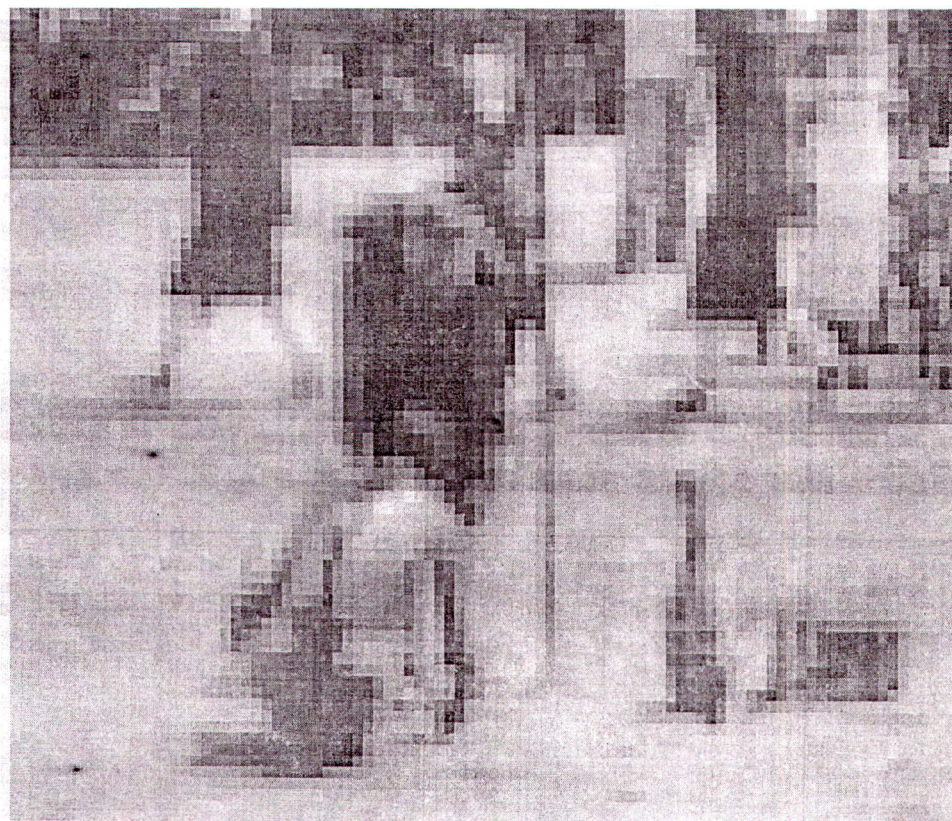
The Climate of Kiphire district on the whole is humid and cold. During the winter, the temperature sometimes goes down to a very low degree. The lowest temperature recorded during recent years was 2.7 degree Celsius and a high temperature of 37.0 degree Celsius. Monsoon period extends from June to September and sometimes up to October with an average rain fall of 75mm .The climate of the district is slightly extreme but healthy.

People

The people of the district are of Mongoloid stalk and predominantly inhabited by the recognized tribals of **Sangtam**, **Yimchungrü**, and **Sümi**. Besides these, there are six other sub-tribes in the district. It has 77 recognized villages, 7 townships, 4 compounds with a population of 1,06,136. As the district is inhabited by diverse tribes, the people speak different dialects. The main languages/dialects used in the district are that of Sangtam, Yimchungrü and Sumi. Interestingly, each people understand each others' dialect and even speak alternately. They live together harmoniously. Perhaps, the existence of different linguistic tribes offers an ample opportunity for the outsider of learning both the dialects and the people. The people of this district as a whole are faithful and cooperative.

Socio-Culture

Like in any other part of the State, the district is rich in culture, custom and practices. Varieties of costumes and traditional dresses, for dancing and chanting folksongs, are found among the people. Deeply rooted faith helps the social advancement among the once pagan people. Their love to preserve their traditional culture excels others in the State. The rich culture is exhibited during each tribal festival with pomp and gaiety. The Yimchungrü tribe celebrates **Metemnio** in the month of August every year. Sangtam celebrates **Mongmong** in September. The Sümi celebrates **Tuluni** in the month of July every year. During these festivals the people celebrates by slaughtering domestic animals like pigs, Mithuns, cows etc. Folk dance and songs form an important part of the festivals. In the olden days drinking of rice beer (*Mutu*) on this occasion was compulsory; however, with the advent of Christianity in the land it is now seldom practiced.



Mongmong

Occupation & Economy

With the majority of the people living in the rural villages, agriculture remains the main occupation of the people of the district. In spite of favourable climatic condition and fertile soil, primitive method of jhum cultivation is still extensively practiced leading to wastage of time, energy and environmental degradation. In spite of the government's efforts, the agricultural techniques adopted by the farmers are still semi-primitive and pre-industrial. As a result, the output is very low. The main crop of this district is paddy, maize, millet and barley. Cash crops

like potato, soybean and different kinds of local beans are also grown. A local bean called **Kholar** is very popular in the district and is found in plenty. Fruits like apple, orange, mango, guava, banana etc. are also grown. In brief, there is not much diversification in agricultural activities in this area. Poultry, piggery and cattle breeding are also practice in this district, though mostly of traditional method. As per the joint survey conducted by the state department of geology and mining and the Geological Survey of India, huge deposits of mineral resources are available in this district. High quality of limestone deposits of nickel, cobalt, chromites and magnetite are found in this district. Apart from this, natural huge sources of Brine are also found. Varieties of rocks are found in the Saramati belt. Kiphire district is very rich in natural resources, which can boost up State economy if properly tapped.

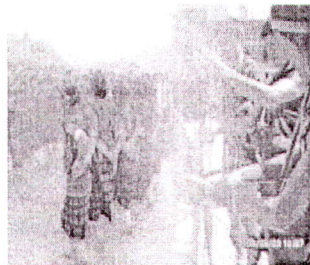
Tourist Spots

There are a number of tourist attraction spots in the district like Saramati peak, Stone cafe in Khongjiri, Mimi and Salomi villages; Zungki, Tizu and Likhimro rivers, mining locations in Pokphur and Longpotrok, Fakim Wild Life Sanctuary, proposed International Trade Centre at Mimi and Likhimro Hydro Project. A number of traditional houses with stone slates which is rare in other parts of the State are available in Chomi, Mimi, Samphure, Phelungre and Pungro villages. A good variety of Orchids like Blue and Red Vanda, Rhododendron in white, red and yellow which are not commonly found in other parts of the State are also found in Saramati and Jhinkhu mountains. Tragopan and hill peacocks are also found in plenty in Fakim Wildlife Sanctuary. Rare animals like Kayak, Tiger, Hornbill, Bears, and Bees of various types and wild Mithuns are also found in Saramati forest in summer. However, these need to be properly developed to attract tourists.

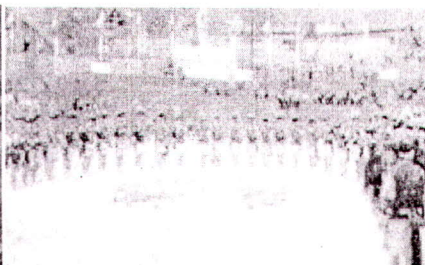
Hydro Project

Kiphire District takes pride in having I (one) Likhmiro Hydro Project under Pungro circle, the tributaries of the Zungki river which flows to Chindwin river in Myanmar. The Hydro Project also generates 24 MW power which is distributed in the state and outside as well. It is also a good source of Drinking water to the neighboring villages and is also used for irrigation purposes.

Festivals



Sangtam Naga tribe



Sumi Naga tribe



Yimchunger Naga tribe

Kiphire District Overview

An official Census 2011 detail of Kiphire, a district of Nagaland has been released by Directorate of Census Operations in Nagaland. Enumeration of key persons was also done by census officials in Kiphire District of Nagaland.

Kiphire District Population 2011

In 2011, Kiphire had population of 74,044 of which male and female were 37,830 and 36,174 respectively. Kiphire District population constituted 3.74 percent of total Maharashtra population. In 2001 census, this figure for Kiphire District was at 0.00 percent of Maharashtra population.

Kiphire District Density 2011

The initial provisional data released by census India 2011, shows that density of Kiphire district for 2011 is 66 people per sq. km. In 2001, Kiphire district density was at 0 people per sq. km. Kiphire district administers 1,255 square kilometers of areas.

Kiphire Literacy Rate 2011

Average literacy rate of Kiphire in 2011 were 71.10 compared to 50.23 of 2001. If things are looked out at gender wise, male and female literacy were 76.54 and 65.44 respectively. For 2001 census, same figures stood at 55.71 and 44.10 in Kiphire District. Total literate in Kiphire District were 42,445 of which male and female were 23,290 and 19,155 respectively. .

Kiphire Sex Ratio 2011

With regards to Sex Ratio in Kiphire, it stood at 961 per 1000 male compared to 2001 census figure of 900. The average national sex ratio in India is 940 as per latest reports of Census 2011 Directorate. In 2011 census, child sex ratio is 955 girls per 1000 boys compared to figure of 936 girls per 1000 boys of 2001 census data.

Kiphire Child Population 2011

In census enumeration, data regarding child under 0-6 age were also collected for all districts including Kiphire. There were total 14,335 children under age of 0-6 against 0 of 2001 census. Of total 14,335 male and female were 7,331 and 7,004 respectively. Child Sex Ratio as per census 2011 was 955 compared to 936 of census 2001. In 2011, Children under 0-6 formed 19.36 percent of Kiphire District compared to 16.14 percent of 2001. There was net change of 3.22 percent in this compared to previous census of India.

Kiphire Population 2011

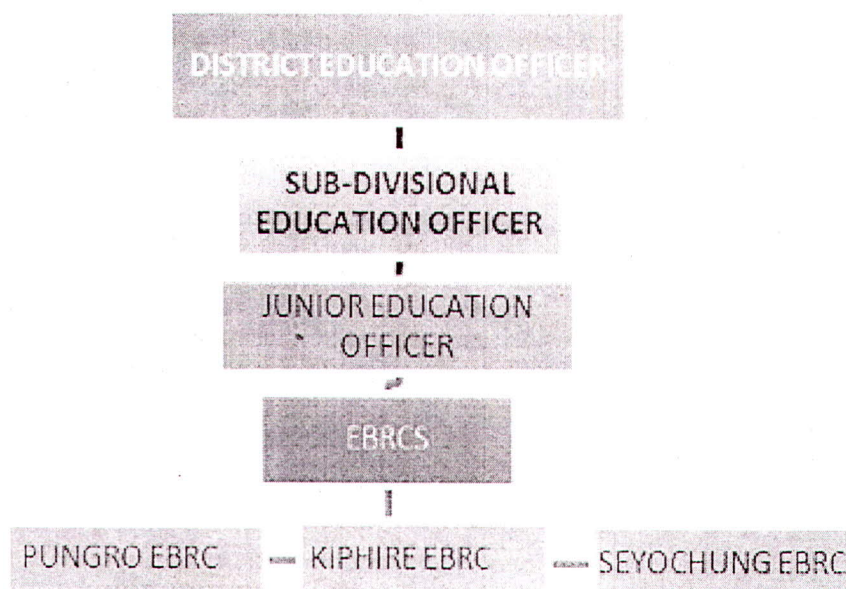
Description	2011
Actual Population	74,004
Male	37,830
Female	36,174
Population Growth	0.00%
Area Sq. Km	1,130
Density/km2	65
Proportion to Nagaland Population	3.74%
Sex Ratio (Per 1000)	956
Child Sex Ratio (0-6 Age)	948
Average Literacy	69.54
Male Literacy	74.88
Female Literacy	63.96
Total Child Population (0-6 Age)	14,711
Male Population (0-6 Age)	7,550
Female Population (0-6 Age)	7,161
Literates	41,232
Male Literates	22,675
Female Literates	18,557
Child Proportion (0-6 Age)	19.88%
Boys Proportion (0-6 Age)	19.96%
Girls Proportion (0-6 Age)	19.80%

Population (%)	77.72 %	22.28 %
Total Population	57,517	16,487
Male Population	29,243	8,587
Female Population	28,274	7,900
Sex Ratio	967	920
Child Sex Ratio (0-6)	944	968
Child Population (0-6)	11,787	2,924
Male Child(0-6)	6,064	1,486
Female Child(0-6)	5,723	1,438
Child Percentage (0-6)	20.49 %	17.74 %
Male Child Percentage	20.74 %	17.31 %
Female Child Percentage	20.24 %	18.20 %
Literates -	29,387	11,845
Male Literates	16,255	6,420
Female Literates	13,132	5,425
Average Literacy	64.26 %	87.33 %
Male Literacy	70.13 %	90.41 %
Female Literacy	58.23 %	83.95 %

Education:

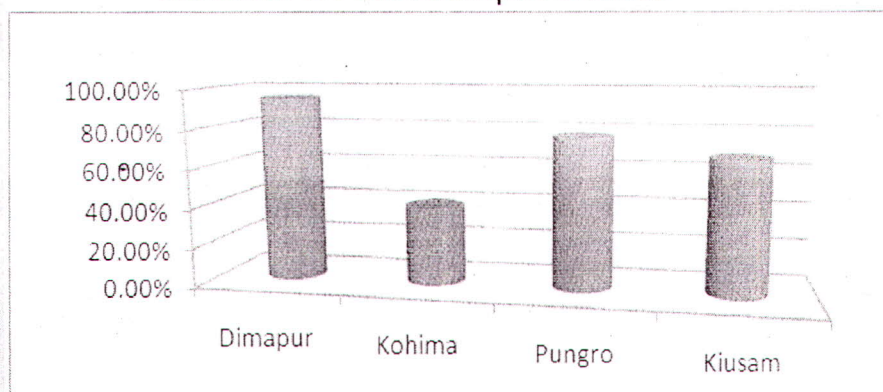
Under the Government managed institutions, there are 11 High Schools, 50 Middle Schools, and 108 Primary Schools and one Government college in the district. These institutions are well spread over rural, urban and semi-urban areas of the district, except the Zisaji presidency college which is a degree college and is located in the KiphireHq. The different stages of schooling from primary to High School levels are clearly demarcated with separate establishments. In the private sector, all the different stages from primary to High School level are contained in the same establishment. Only two institutions,i.e Loyola Higher Secondary School (Private) and Zisaji Presidency College (Under Higher Education Department) offer Higher Secondary Level education. There is one JawarharNavodayaVidyalaya (JNV) which offers courses up-to high school

The administrative structure of education sector



Transport:- Nagaland State Transport (NST) is providing affordable public service in almost all the sadar areas in the district. The public transport network has further increased by introducing new bus service from Kiusam town to Kiphire

Utilization of Public transport facilities



Source: Office of the Superintendent of NST, Kiphire.

MINERAL RESOURCES

The mineral rich opheolite belt of the Indo-Myanmar continental plate runs through the district. Consequently, the district is endowed with fairly rich mineral resources like high grade Limestone, Magnetite and various Dimensional/Building Stones. The available Minerals in respect of their occurring locations are listed below.

Mineral Deposits	Location
Limestones	Mimi; Salumi; Kamkur
Magnetite	Pokphur; Thongsnyu
Granite	Mimi and Luthur
Sandstones	Seyochung, Rishitsu, Chanchore, Old Monger, Kisetong, & other areas
Green Spillite	Moya; Likhimro
Boulders & Silty Sand	River sides of Züngki and Thanaki Rivers
Sheared Serpentine	Mimi- Pungro- Salumi road

. In Kiphire district there are still villages which are yet to be connected: these are Shishimi, Vongtsüvong, Khong and Lopfukhong. All roads are under the PWD R&B except for 78.5 Kms of the National Highway No.202 which passes through the district. Vehicular movement is relatively low even in the district headquarter. As the DHDR sample survey indicates, traffic congestions is least of the problems. The biggest problem is the issue of connectivity and bad roads.

1.1 Location & Geographical Area

Location

Kiphire district, bifurcated from Tuensang district, was inaugurated on 24th January 2004. It is located on the eastern part of the State and is 254 KM away from the Capital city, Kohima via Meluri of Phek district. It is bounded by Tuensang district on the North, Phek district on the South, Myanmar on the East and Zunheboto district in the West. Kiphire stands in the middle of the two lofty mountains of Saramati and Jingkhu at an elevation of 896.42 meters above the sea level.

Geography

It is bounded by Tuensang District in the north, Phek District in the west and Myanmar in the east. It is headquartered at Kiphire, which is at an altitude of 896 m above sea level. The major cities of this district are Seyochung, Sitimi, Pungro and Kiphire. Saramati (3,841 m), highest peak in Nagaland, is located in this district. Kiphire also has an earth station. Kisatong village is another tourist destination in the district.

1.2 Topography

According to the 2011 census Kiphire district has a population of 74,033, roughly equal to the nation of Dominica. This gives it a ranking of 625th in India (out of a total of 640). Kiphire has a sex ratio of 961 females for every 1000 males, and a literacy rate of 71.1 %. Sangtam (Eastern), Yimchunger and Sema are the predominant tribes.

No. of Rural Development Blocks	:	3 blocks (Kiphire, Pungro, Sitimi)
No. of Govt. recognized village	:	108 villages.
Total population	:	74033 (as Census 2011)
Density of population	:	66/per Sq. Km.
Number of Major Towns	:	(3) Kiphire Town, Seyochung Town, Pungro Town
Literacy percentage	:	71.1% (as Census 2011)
Important festivals	:	Mongmong (Sangtam) Metumnio (Yimchungrü), Tuluni & Ahuna (Sema)
Important Rivers	:	Zungki, Tsungaki, Likimro & Saramati
Important Crops	:	Maize, Kholar, Potato, Soyabean, Ginger, Paddy, Colocassia, etc.
Languages	:	Sangtam, Sumi, Yimchunger, Tikhir, English, Nagamese and Hindi.

1.3 Availability of Minerals

Sl.No	Name of Mineral	Production in Tones
Major Mineral	Limestone, Magnetite with Nickel, Cobalt, Chromium	2000 Tones only Limestone is extracted for making cement in Nagaland
Minor Mineral		
	Zinc	No Extraction
	Sandstone	No Extraction
	Serpentine	No Extraction
	Granite	No extraction

Source: Dept of mines & Geology

1.4. Forest

Purchased forest	:	852.69Ha
Protected forest	:	973.16Ha
Wildlife Sanctuary	:	642.00Ha
Village forest	:	75000.00Ha

1.5. Administrative set up

There are 8 Circles in Kiphire Dist :

	Circle
Kiphire Dist	1.Kiphire Sadar
	2.Pungro
	3.Seyogro
	4.Amahator
	5.Sitimi
	6.Longmatra
	7.Kiusam
	8.Khonsa

The Kiphire District Headquarter is established in the mid of Kiphire Town.

The areas under Kiphire district was part of the 'North Eastern Frontier Agency' (NEFA) as part of the Tuensang area. This part of the state remained untouched by the British colonial administration even after its neighboring areas were subjugated during the 1920s. Though it was included within the category of Naga tribal areas under Assam and placed under political control, practically, there was neither sign of political control nor any administration till the transfer of power in 1947. In the wake of expansion of civil administrative outposts, survey for opening of administrative headquarters was done in 1951. The survey team, led by Shri. H. Zophianga, the then Assistant to Deputy Commissioner of Tuensang, visited the present Kiphire HQ. The land was donated by Kiphire and Singrep villages

and subsequently, on 16th June 1952, the Southern Administrative centre was established at Kiphire with Shri. S. D Lakhar as the first Base Area Superintendent. Kiphire has remained under Tuensang district as an administrative sub-division till it was bifurcated from Tuensang district and was inaugurated as the eleventh district of Nagaland on 24th January, 2004

2. District at Glance

Sl.NO	Particular	Year	Unit	Statistics
1	Geographical features			
(A)	Geographical Data			
	i) Latitude			25.54N to 25.9N
	ii) Longitude			94.47E to 94.78E
	iii) Geographical Area		Hectares	125500
(B)	Administrative units			
	i) Sub Divisions	DC+ADC+SDO	Nos	3
	ii) Tehsil		Nos	5
	iii) Sub-Tehsil		Nos	3
	iv) Patwar circle		Nos	7
	v) Panchayat Simitis		Nos	
	vi) Nagar ship		Nos	3
	vii) Nagar Palika		Nos	
	viii) Gram Panchayats		Nos	108
	ix) Revenue Villages		Nos	108
	x) Assembly Area			2
2	Population		Total	74033
(A)	Sex -wise			
	i) Male (urban)	2011	Nos	8555
	ii) Female (urban)	2011	Nos	7942
(B)	i) Male (Rural)	2011	Nos	29203
	ii) Female (Rural)	2011	Nos	28333
3.	Agriculture			
A	Land utilization			
	i) Total Area	2011	Hectare	125500.00
	ii) Forest Cover		Hectare	77467.87
	iii) Non Agriculture Land		Hectare	1820213.00
	iv) Cultivation land		Hectare	29830.00
4.	Forest			
	i) Forest		Hectare	77467.87
5	Railways			
	i) Length of rail line	2010-11	Kms	Nil
6	Roads			
	a) National Highway	2010-11	Kms	Nil
	b) State Highway	2010-11	Kms	94

	c) Main District highway	2010-11	Kms	20
	d) other district	2010-11	Kms	207
	e) Rural/Agri. marketing Board Roads	2010-11	Kms	80.13
	f) Kachacha Road	2010-11	Kms	319
7	Communication			
	a)Telephone connections	2010-11	Nos	2500
	b)Post offices	2010-11	Nos	13
	c) Telephone Centre	2010-11	Nos	245
	d) Density of Telephone	2010-11	Nos/1000	74.00
	e) PCO	2010-11	Nos	2563
	f) PCO-STD	2010-11	Nos	450
	g) Mobile	2010-11	Nos	2645
8	Public Health			
	a)Allopathic Hospital(District Hospital)	2010-11	Nos	1
	b) Beds in Allopathic Hospital	2010-11	Nos	104
	c)Ayurvedic Hospital	2010-11	Nos	Nil
	d) Beds in AyurvedicHospital	2010-11	Nos	Nil
	e) Unani Hospitals	2010-11	Nos	Nil
	f) Community Health centre	2010-11	Nos	1
	g) Primary Health Centre	2010-11	Nos	4
	h)Dispensaries	2010-11	Nos	Nil
	i)Sub-Health centres	2010-11	Nos	19
	j)Subsidiary Health Centre	2010-11	Nos	Nil
	k)Private Hospitals	2010-11	Nos	NA
9	Education			
	a)Primary School	2010-11	Nos	84
	b)Middle Schools	2010-11	Nos	25
	c)Secondary & Senior Secondary Schools	2010-11	Nos	13
	d)Colleges	2010-11	Nos	1
	e)Technical university	2010-11	Nos	Nil

2.1. Existing Status of Industrial Areas in the District of Kiphire

Sl.NO	Name of Ind. Area	Land acquired in hectare)	Land Developed in hectare	Prevailing rate per sq.m in Rs	No of Plots	No of allotted plots	No of vacant plots	No of units in production
1	Mini Industrial Estate	30 Acres	N/A	N/A	N/A	N/A	N/A	N/A

3. Industrial Scenario Kiphire

3.1. Industry at Glance

Sl.No	Head	EMI			EMI II			
		2013-14	2014-15	Total	2008-11	2011-12	2012-13	Total
1	Registered industrial unit							
	Steel Fabrication	2	-	2	31	3	1	35
	Stone Crusher	1	-	1	1	-	-	1
	Candle unit	-	-	-	9	-	-	9
	Mech. Furniture	2	12	14	32	6	2	40
	Handloom & Weaving	-	8	8	10	4	-	14
	Motor workshop	1	4	5	6	1	-	7
	Medicinal & aromatic	-	-	-	1	-	-	1
	Tyre retreading	-	2	2	5	1	1	7
	Tea Industry	-	-	-	1	-	-	1
	Cane& Bamboo	-	4	4	1	2	-	3
	Salt processing unit	-	-	-	1	1	-	2
	Rice ,Attachakki & oil Mill	-	2	2	1	-	-	1
	Blacksmithy	-	-	-	-	1		1
	Brick Kiln	-	-	-	-	-	1	1
	Computer Typing Centre	1	-	1	-	-	-	-
	Printing Press	1	2	3	-	-	-	-
	Servicing Centre	1	2	3	-	-	-	-
	Bakery unit	1	3	4	-	-	-	-
	Food Processing	1	1	2	-	-	-	-
	Handicraft	1	-	1	-	-	-	-
	Spices Grinding Unit	1	-	1	-	-	-	-
	Training Center	1	-	1	-	-	-	-
	Cattle & Poultry Feed	-	1	1	-	-	-	-
	Noodles manufacturing	-	1	1	-	-	-	-
	Bee Keeping	-	1	1	-	-	-	-
	Rice Mill	-	8	8	-	-	-	-
	Barber unit	-	1	1	-	-	-	-
	Flour Mill	-	2	2	-	-	-	-
	Sound System	-	1	1	-	-	-	-
	Motor winding	-	1	1	-	-	-	-
	Knitting unit	-	6	6	-	-	-	-
	Washing Powder unit	-	1	1	-	-	-	-
	Carpet Weaving	-	1	1	-	-	-	-

Sl.No	Head	Unit	Particulars
2	Total Industrial unit	14	64
3	Registered medium & large unit	Nil	Nil
4	Estimated average no of daily workers employed in small scale Industries	2 per unit	2 x 201 = 402
5	Employment in large and Medium Industries	Nil	Nil
6	No of Industrial area	1	N/A
7	Turnover of small scale Industries	Rs. 1.86 Lacs/unit	Rs. 373.86 Lacs
8	Turnover of Medium & large scale Industries	Nil	Nil

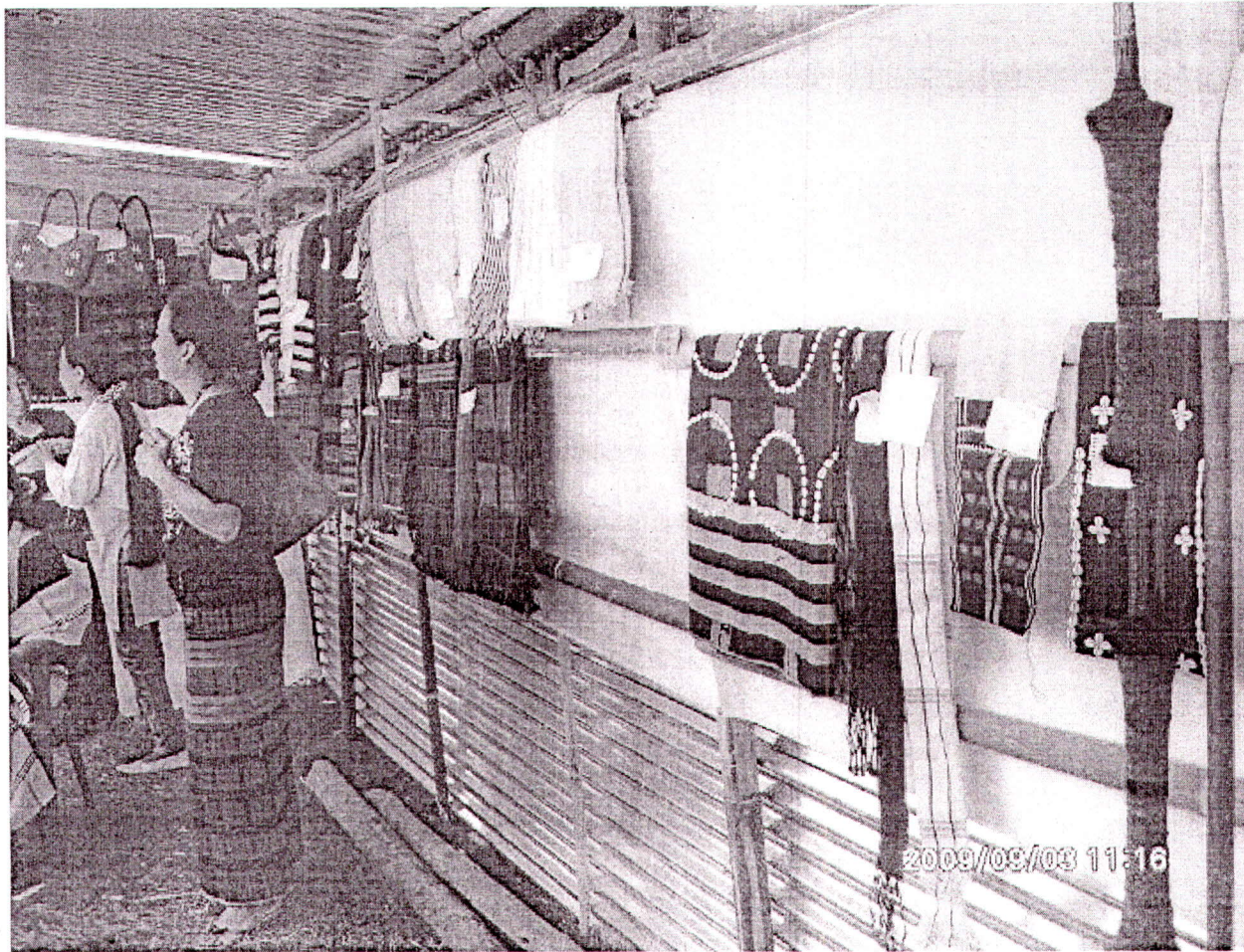
3.2 Year wise Trend of units Registered

	Year	No of Registered units	Employment	Investment in lacs
Up to	2006-2010	139	268	139.5
	2010-11	52	104	120
	2011-12	19	38	30
	2012-13	6	15	8
	2013-14	14	30	19
	2014-15(till November 2014)	65	130	140
	Total	295	585	456.5

3.3.Details of Existing Micro & Small Enterprises and artisan units in the District as per NIC Code

Sl. No	NIC 2004	Description	Number of units	Investment (lacs)	Employment
1	1	Agriculture, Hunting and Related Service Activities	Nil	Nil	Nil
2	2	Forestry, Logging and Related Service Activities	Nil	Nil	Nil
3	5	Fishing, Aquaculture and Service Activities Incidental to Fishing		Nil	Nil
4	10	Mining of Coal and Lignite; Extraction of Peat	Nil	Nil	Nil
5	11	Extraction of Crude Petroleum and Natural Gas; Service Activities incidental to Oil and Gas Extraction, excluding Surveying	Nil	Nil	Nil
6	12	Mining of Uranium and Thorium Ores	Nil	Nil	Nil
7	13	Mining of Metal Ores	Nil	Nil	Nil
8	14	Other Mining and Quarrying	5	30	30
9	15	Mfg of Food Products and Beverages	4	8.00	12
10	16	Mfg of Tobacco Products	Nil	Nil	Nil
11	17	Mfg of Textiles	7	14	21
12	18	Mfg of Wearing Apparel; Dressing and Dyeing of Fur	Nil	Nil	Nil
13	19	Mfg of Leather & Leather Product	Nil	Nil	Nil
14	20	Mfg of Wood and Wood Products	10	15.60	20
15	21	Mfg of Paper and Paper Products	Nil	Nil	Nil
16	22	Publishing, Printing & Reproduction of Recorded Media	Nil	Nil	Nil
17	23	Mfg of Coke & Refined Petroleum Products and Nuclear Fuel	Nil	Nil	Nil
18	24	Mfg of Chemicals and Chemical Products	Nil	Nil	Nil
19	25	Mfg of Rubber and Plastics Products	Nil	Nil	Nil
20	26	Mfg of Other Non-Metallic Mineral Products	Nil	Nil	Nil
21	27	Mfg of Basic Metals	1	2	5
22	28	Mfg of Fabricated Metal Products	1	10.00	4
23	29	Mfg of Machinery and Equipment n.e.c.	Nil	Nil	Nil
24	30	Mfg of Office, Accounting & Computing Machinery	Nil	Nil	Nil
25	31	Mfg of Electrical Machinery and Apparatus n.e.c.	Nil	Nil	Nil
26	32	Mfg. of Radio, Television and Communication Equipment and Apparatus	Nil	Nil	Nil
27	33	Mfg of Medical, Precision and Optical Instruments, Watches and Clocks	Nil	Nil	Nil
28	34	Mfg of Motor Vehicles, Trailers and Semi-Trailers	Nil	Nil	Nil
29	35	Mfg of Other Transport Equipment	Nil	Nil	Nil
30	36	Mfg of Furniture; Manufacturing etc.	Nil	Nil	Nil
31	37	Recycling	Nil	Nil	Nil
32	40	Electricity, Gas, Steam and Hot Water Supply	Nil	Nil	Nil
33	41	Collection, Purification and Distribution of Water	Nil	Nil	Nil

34	45	Construction	1	5	30
35	50	Repair & Maintenance of Motor Vehicle, Retail Sale of Automotive Fuel	5	10.00	10
36	51	Wholesale of Trade and Commission Trade	Nil	Nil	Nil
37	52	Repair & Maintenance of Personal & Household Goods; Retail Trade	Nil	Nil	Nil
38	55	Hotels and Restaurants	Nil	Nil	Nil
39	60	Land Transport; Transport via Pipelines	Nil	Nil	Nil
40	61	Water Transport	Nil	Nil	Nil
41	62	Air Transport	Nil	Nil	Nil
42	63	Supporting & Auxiliary Transport & Travel Agents Activities	Nil	Nil	Nil
43	64	Post and Telecommunications	Nil	Nil	Nil
44	65	Financial Intermediation, Except Insurance & Pension Funding	Nil	Nil	Nil
45	66	Insurance and Pension Funding, Except Compulsory Social Security	Nil	Nil	Nil
46	67	Activities Auxiliary to Financial Intermediation	Nil	Nil	Nil
47	70	Real Estate Activities	Nil	Nil	Nil
48	71	Renting of Machinery & Equipment Without Operator & of personal & House Hold goods	Nil	Nil	Nil
49	72	Computer and Related Activities	Nil	Nil	Nil
50	73	Research and Development	Nil	Nil	Nil
51	74	Other Business Activities	65	70	130
52	75	Public Administration and Defense; Compulsory Social Security	Nil	Nil	Nil
53	80	Education	1	4.00	10
54	85	Health and Social Work	1	7.00	5
55	90	Sewage and Refuse Disposal, Sanitation and Similar Activities	Nil	Nil	Nil
56	91	Activities of Membership Organization etc.	Nil	Nil	Nil
57	92	Recreational, Cultural and Sporting Activities	Nil	Nil	Nil
58	93	Other Service Activities	Nil	Nil	Nil
59	95	Activities of Private Households as Employers of Domestic Staff	Nil	Nil	Nil
60	96	Undifferentiated Goods - Producing Activities of Private Households for Own Use	Nil	Nil	Nil
61	97	Undifferentiated Service - Producing Activities of Private Households for Own Use	Nil	Nil	Nil
62	99	Not Reported	Nil	Nil	Nil
		Total	101		277



3.4 Large scale Industries/Public sector undertakings

1 Hydro Power Project at Likhimro in Kiphire district of 24 MW capacity

3.5* Growth Trend:-

The growth trend in the district is very low since no major Industries existed and employment-scope is also very low. Roads are so to say the main means of transport and communication. However, the condition of most these roads are deplorable which is hampering the expansion of potentials economic activities in district.

3.6 Vendorisation/Ancillarisation of the Industry: - Nil

3.7 Medium scale Enterprises: - Nil

3.8.1 List of the units in Kiphire district & nearby area:-

Nil

3.8.2 Major exportable item:-

Limestone, Ginger, Soyabean, Maize etc

3.9 Service Enterprises: - Nil

3.9.1 Potentials area of service industry:-

TV repairing, Mobile, Tailoring etc

3.10 Potential for new MSMEs: Yes

Agro Based

1. Rice Mill
2. Ginger Processing (de hydration) Plant
3. Fruit & vegetable preservation /canning centre
4. Starch Production unit
5. Poultry & Cattle Feed Plant
6. Maize & Soyabean
7. Food Processing
8. Piggery Farm
9. Pop Corn Making unit
10. Tea Processing
11. Honey Bee

FOREST based:

- a) Agarbati bamboo sticks b) Furniture making c) Cane and bamboo unit
- d) Handicrafts e) wood curving f) Broom unit
- g) Ayurvedic Medicine h) bamboo Mat Door & window frame
- i) Floriculture

Mineral –based:-

- a) Stone crushing b) Stone cutting & polishing c) Stone curving
- d) Boulder mall. E) Stone dressing f) cement Jally & other products
- g) Pottery i) Brickfield

Textile based:-

- a) Tailoring unit b) wool weaving unit c) Hand loom unit
- d) Thread making unit e) Ready-made garments unit

Engineering based:

- a) Fabrication of grills, iron gates etc
- b) Repairs to machinery
- c) Motor works
- d) Printing press
- e) Barbed Wire
- f) Agricultural Implements
- g) Tin-smithy
- h) Wax candle
- i) Washing Soap

Demand based:-

- a) Auto repair works
- b) Confectionery unit
- c) Electrical Repair unit
- d) Pickle making
- e) Fish dry making
- f) Cyber café
- g) Internet service unit
- h) Green vegetables shop etc

The District Industries Center, Peren needs to be strengthened extension work achieve the growth envisaged by exploiting the estimated potential. The present position in regard to the infrastructure available in terms of training centers, road networks, services centers, etc is inadequate and need to be augmented to bring about appositve change in the climate. At present, the district has the following networks of centers/units.

- | | |
|--------------------------------------|---|
| 1. Lemongrass distillation Plant- | 1 |
| 2. International Border trade centre | 1 |

To encourage prospective entrepreneurs to take up industrials activities, there are provisions to provide margin money/ seed money/ subsidy by the implementing agencies.

4.0 Existing clusters of Micro & Small Enterprises

4.1. Detail of major cluster: - Nil

4.1.1 Manufacturing sector:- Honey Cluster Proposed in the 2015-16

4.1.2 Service sector: - Nil

4.2 Details for Identified cluster:-

4.2.1 Name of the Cluster: - Beekeeping cluster at Kiphire town proposed

1	Principal products Manufactured in the cluster	Honey (Raw), Nucleus, Wax etc
2.	Name of the cluster	Kiphire Bee keeping cluster, Kiphire
3.	No of functional units in the clusters	50 Nos
4.	Turnover of the clusters	1.00 lacs
5.	Value of exports from the clusters	Nil
6.	Employment in clusters	100 Nos
7.	Average investment in plant & Machinery	1.50 lacs
8.	Major issues/ requirement	Capacity Building, Thrust building, process etc
9	Presence of capable institutions	Nagaland Beekeeping and Honey Mission, Dimapur, Nagaland
10	Thrust Areas	Net working, Processing Method
11	Problems & constraints	Financials, lack of Skills etc

Present status of the cluster: - new proposal

4.2.2 .Name of the cluster:- Stone Crushing Unit Cluster at Kiphire

1	Principal products Manufactured in the cluster	Curve Stone, Chips, Sand etc
2	Name of the cluster	Stone Crushing Unit Cluster
3	No of functional units in the clusters	20 nos
4	Turnover of the clusters	1.5 lac
5	Value of exports from the clusters	Nil
6	Employment in clusters	40 nos
7	Average investment in plant & Machinery	6.5 lac

Present status of the cluster:- New proposal

4.2.3. Fabrication and General Engg cluster: - Furniture Making Cluster at Sitimi

1	Principal products Manufactured in the cluster	Chair, Table, Wood Curving, Artistic Items
2	Key trade Association address	Furniture Making Association
3	No of functional units in the clusters	20
4	Turnover of the clusters	1.0 lac
5	Value of exports from the clusters	Nil
6	Employment in clusters	35 nos
7	Average investment in plant & Machinery	1.0 lac

4.3 General issues rose by industry associations during the course of meeting:-

1. Non- reorganization of EM-II acknowledgment by some of the state Government agencies.
2. Re-constitution of MSEFC in the state of Nagaland at the earliest.
3. CLCSS
 - I. lack of awareness among branch level bankers.
 - II. There should be some mechanism for tracking of application status, so that the entrepreneur gets present status of their application.
4. Bankers avoid accepting the cases under CGTMSE especially for the New Entrepreneurs and insist for the collateral security.

5. 0 Banks in Kiphire District

Sl.No	Name of Bank	Nos
1	State bank of India	2
2	The Nagaland State Co-operative Bank Ltd	1

5.1 Credit programme for the year 2014-15 in Kiphire district. (in lac)

District	No of brs	Crop loan	ATL	Total Agr	SME	OPS	TPS	NPS	GT
Kiphire	3	390	448.32	838.32	105.00	230	1173.32	1010	2183.32

Source: - SLBC, Nagaland

6. Action plan for MSME Schemes

Sl.NO	Name of the Scheme	Proposed activity on the Scheme
1	MSE-CDP	
2	ISO-9000/14000/HACCP reimbursement	1 No of MSEs will be motivated for obtaining the benefit under the scheme
3	MSE-MDA	1 No of cases to be processed
4	CLCSS	1 Nos of MSEs will be motivated for obtaining the benefit under the scheme
5	Capacity Building & strengthening of data base	01 proposal of registered association will be forwarded for strengthening of data base
6	International cooperation	01 proposal is proposed to be forwarded for an exposure visit
7	TREAD for women	01 proposal will be persuaded under the scheme
8	VDP	01 No of state level VDP with PSUs/large Govt organization for the benefit of local industry
9	National awards	02 numbers of MSMEs will be persuaded
10	NMCP Schemes	
	i) Lean manufacturing	01 No Awareness programme for MSMEs
	ii) Design clinic	01 No Awareness programme for MSMEs
	iii) Market assistance & Tech.up gradation	01 No Awareness programme on packaging
	iv) QMS/QT	01 No Awareness programme for MSMEs
	v) Tech & quality up gradation support	01 No Awareness programme for MSMEs
	vi) ICT	01 No Awareness programme for MSMEs
	vii) Bar code	01 No Awareness programme for MSMEs
	viii) IPR	01 No Awareness programme for MSMEs
	ix) Incubator scheme	Proposal for setting up of incubator from a technical institution will be persuaded

7.0 Steps to set up MSMEs

Sl.No.	Type of Assistance	Institutions
1	Provisional Registration Certificate (EM-1) & Permanent Registration certificate(EM-II)	District Industries Centre,Kiphire798611 Nagaland State,Ph : 897499298 e-mail:dickiphire@gmail.com
2	Identification of project profiles, techno-economic and managerial consultancy services, market survey and economic survey	Br. MSME Development Institute, Industrial Estate, Dimapur – 797112, No. 03862-248552
3	Land & Industrial shed	Nagaland Industrial Development Corporation, Opp. Naga Shopping Arcade, Dimapur – 797112, Ph. No. 03862-226473
4	Financial Assistance	a) North Eastern Development Financial Institution, (Branch Office) Supply colony, Dimapur – 797112 Ph. No. 03862-235030 b) Nagaland Industrial Development Corporation, Opp. Naga Shopping Arcade, Dimapur – 797112 Ph. No. 03862-226473 c) Small Industries Development Bank of India, NIDC Complex Dimapur – 797112 Ph. No. 03862-234820 d) National Bank for Agriculture & Rural Development, Circular Road, Khermahal, Dimapur – 797112 e) State Bank of India and Other Nationalized Banks
5	For raw materials under Govt Supply	Nagaland marketing & raw material supply corporation, Dimapur
6	Plant & machinery under hire/purchase basis	NSIC,DIC Camus,4 th mile,Dimapur
7	Power/Electricity	Department of Electricity Kohima
8	Technical Know-how	Br.MSME-Development Institute, Dimapur District Industries centre, Kiphire
9	Quality & standard	Bureau of Indian Standards Guwahati
10	Marketing /Export Assistance	Nagaland marketing & raw material supply corporation ,Dimapur
11	Other promotional agencies	Khadi Village Industries Commission, Super market complex,Dimapur-797112 Ph: 03862-226546 Khadi & Village Industries Board New Secretariat complex, Kohima-797001 ,PH: 0370-2270013 Nagaland Bamboo Development Agency,6 th mile,Dimapur-797112 Ph:03862-240217

8.0 Additional information (if any) : There are lots of scopes to set up Mineral based Industries since Kiphire district is having lot of deposits available which require extraction of Raw Materials. Power is the main facing problem in the district presently.