



**Government of India
Ministry of MSME**

DISTRICT INDUSTRIAL PROFILE



MANDYA

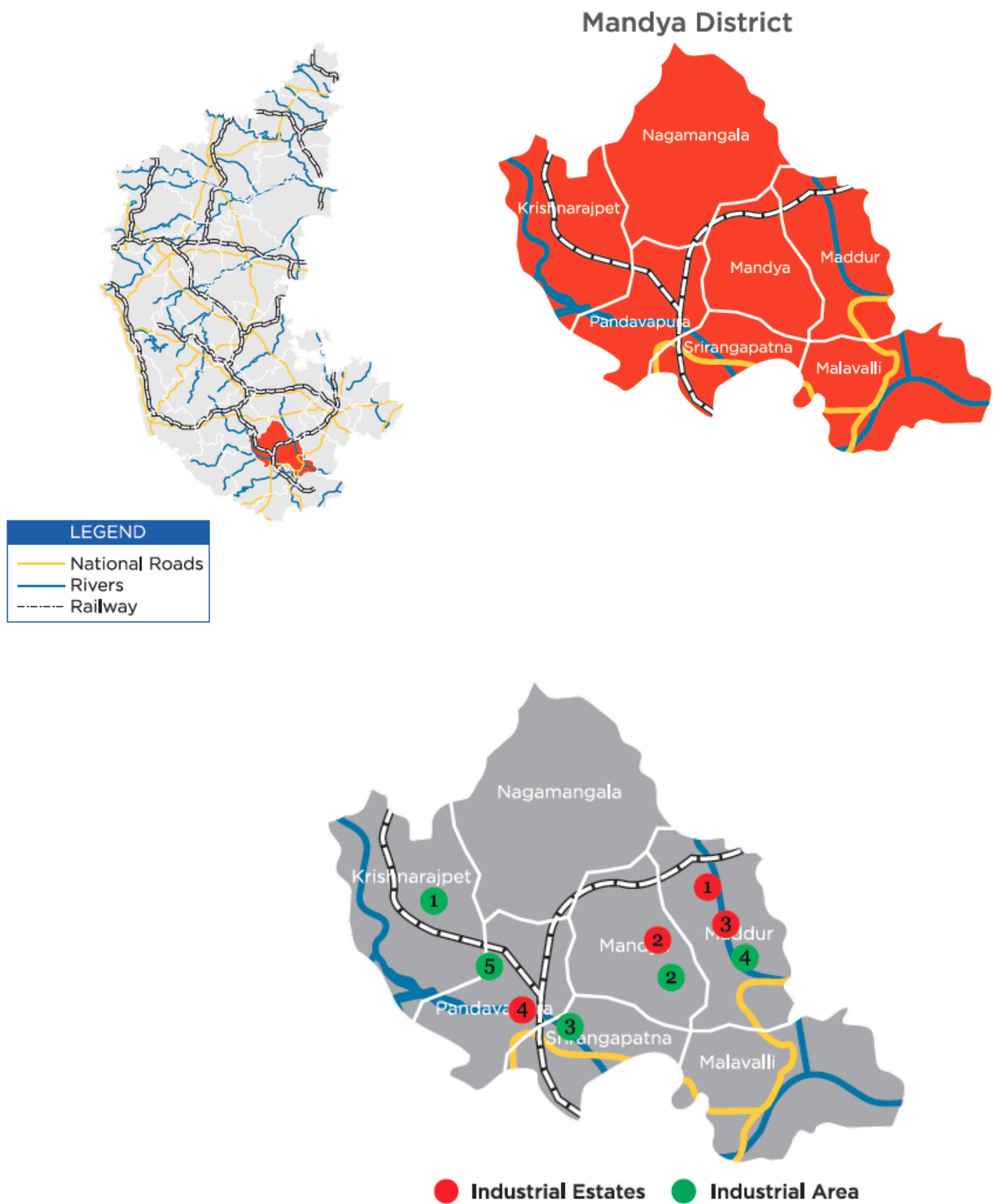
... the land of sugar cane, paddy, Jaggery & mulberry



MSME-Development Institute
(Ministry of MSME, Govt. of India)
Rajaji Nagar Industrial Area, Bengaluru. - 560010
Ph: 91 080 23151581, 82, 83
Fax: 91 080 23144506
e-Mail: dc-di-bang@dcmsme.gov.in
www.msmedibangalore.gov.in



District Overview



FOREWORD

The Micro, Small and, Medium Enterprises, Development Institute (earlier called SISI), under Ministry of MSME, Govt. of India, Bangalore is one of the prime organizations in Karnataka, engaged in the promotion and development of Industries in the Micro, Small and Medium Enterprises. As a part of the promotional and developmental activities, the Institute conducts studies on the Status and performance of Micro, Small and Medium Enterprises in the State. The District profile is one such report compiled and updated under District Industry Development Plan of the Institute assigned by Office of the Development Commissioner (SSI), New Delhi. This report contains the present status of economy, geographical information, statistical data relating to MSME's in each district, salient features of the progress of the different sectors of the each district of Karnataka and performance of industries particularly in Micro, Small and Medium industries.

I am happy to appreciate the efforts put in by all the officers and staff in this institute especially Shri. Rajkumar, IES, Deputy Director (EI), Smt. Neethu. K. Thomas, ISS, Assistant Director, Shri. D.Nataraja, Assistant Director (Stat), Shri.K.M.Balajee, Assistant Director (EI), Shri. Rajendran.B, Assistant Director (Hosiery), Shri. A. Shivakumar, Assistant Director (Mech), Smt. Sruthi G K, Assistant Director (EI), Shri. R. Anbu Kumaran, Assistant Director (IMT) in collecting the latest information available from different departments of Government of Karnataka and in bringing out this Industrial Profile report. I would also like to thank all Joint Directors of District Industry Centres, Senior Officers of Statistics Division of Govt. of Karnataka, Director of Industries and Commerce, for their valuable inputs during the preparation of this document. I sincerely hope that this report will be useful to all concerned with the development of Industries. It is needless to state that this document will serve as a valuable guide to the prospective entrepreneurs who are desirous of setting up of industries/enterprises in the state.

BANGALORE
15.06.2016

(S.N.RANGA PRASAD)
Director

Table of Contents

| S. No. | Topic | Page No. |
|---------------|---|-----------------|
| 1. | Introduction & General Characteristics of the District | 6 |
| 1.1 | Location & Geographical Area | 6 |
| 1.2 | Topography | 6 |
| 1.3 | Availability of Minerals. | 7 |
| 1.4 | Forest | 7 |
| 1.5 | Administrative set up | 7-8 |
| 1.6 | Infrastructure | 8-9 |
| 2. | District at a glance | 9-11 |
| 2.1 | Existing Status of Industrial Estates in the District | 11 |
| 2.2 | Existing Status of Industrial Area in the District | 11-12 |
| 3. | Industrial Scenario Of the district | 12 |
| 3.1 | Industry at a Glance | 12 |
| 3.2 | Year Wise Trend Of Units Registered | 13 |
| 3.3 | Details Of Existing Micro & Small Enterprises & Artisan Units In The District | 14 |
| 3.4 | Large Scale Industries / Public Sector undertakings | 14 |
| 3.5 | Major Exportable Item | 15 |
| 3.6 | Growth Trend | 15 |
| 3.7 | Vendorisation / Ancillarisation of the Industry | 15 |
| 3.8 | Major Exportable Item | 15 |
| 3.9 | Service Enterprises | 15 |
| 3.9.1 | Potentials areas for service industry | 15 |
| 3.10 | Potential for new MSMEs | 15 |
| 4. | Existing Clusters of Micro & Small Enterprise | 16 |
| 4.1 | Details of Major Cluster | 16 |
| 4.1.1 | Manufacturing Sector | 16 |
| 5 | Steps to set up MSMEs | 17-18 |
| 6. | Additional information if any | 19-21 |

Industrial Profile of Mandya District

1. Introduction & General Characteristics of the District

- Located at a distance of 90 kms from Bangalore, capital of Karnataka.
- Spread across 7 talukas – K.R. Pet, Maddur, Malavalli, Mandya, Nagamangala, Srirangapatna and Pandavapura.
- Ranks 3rd in Karnataka for its Sericulture produce.
- Sugar Mills, Jaggery making units, Rice Mills, Solvent extraction are the prominent industries of this district.
- Has the oldest sugar factory in Karnataka, with a crushing capacity of 5,000 tons of cane per day.
- Has the 1st hydro electric power project in India.
- Sri. Krishnaraja Wodeyar, Dr. Sri. M. Vishweshwaraiah, Sri. Mirza Mohamed Ismail, Sri. Lenli. C. Kolmen, K.V.Shankaregowda are prominent personalities directly responsible for the development of the State.

The soil in the district is not known for its original fertile quality. Its water holding quality is low because of its highly bleached red sandy loam interspersed with some red clay loams. This poor quality of the soil is however made good to some extent by a well planned irrigation system which ensures perennial water supply to agronomic activities. Except for a small but distinct ridge like jail range on the south eastern edge of the district, the whole of Mandya district is a plateau of heights ranging between 2500 to 3000 feet above sea level.

1.1 Location & Geographical Area

Mandya comes under the group of districts known as the maidan (plain) districts and is situated in the southern part of the Karnataka State and to the North of Mysore district of which it once formed a part. The district lies between 76° to 19° and 77° 20° East longitude and 12°13° and 13°14° North latitude.

Mandya district occupies the 18th place in the State in respect of area with 4961 Sq.Kms., constituting 2.59% of the total area of the State.

1.2 Topography

The soil in the district is not known for its original fertile quality. Its water holding quality is low because of its highly bleached red sandy loam interspersed with some red clay loams. This poor quality of the soil is however made good to some extent by a well planned irrigation system which ensures perennial water supply to agronomic activities.

There is a good network of rivers and streams in Mandya district which ensures perennial water supply for the perpetual sustenance of living beings in the district. There are 5 rivers flowing through the district viz., Cauavery, Hemavathi, Lokapavani, Shimsha and Veervasihavani and six streams viz. Nidasaleto, Hebbala, Shima, Handihalla, Amruthur and Bindenahalli. A notable feature of this water spread is its contribution to the generation of electric power at Shivanasamudra, besides enabling a long irrigation canal system through the district.

1.3 Availability of Minerals.

Natural Resources

- Granite
- Building Stone
- Sand
- Quartz
- Felsite
- Ornamental Stone (CBM)

PRODUCTION OF MINERAL

| S.NO. | NAME OF MINERAL | PRODUCTION in tones 2010-2011 |
|----------------|-----------------------|-------------------------------|
| MAJOR MINERAL | | |
| 1. | - Nil - | - |
| MINOR MINERALS | | |
| 1. | Building stone, | 420500 |
| 2. | Quartz, | 1070 |
| 3. | Ornamental stone(CBM) | 1673 |
| 4. | Felsite | 522 |

SOURCE:- DEPT. OF MINES &GEOLOGY

1.4 FOREST:

The taluk has forest area of 24765 hectares, which is associated with the rocky hills. The taluk is yielding minor forest produce. The forest department has several plans and schemes to grow trees in the taluk/district, which helps to enrich the degraded forest and also preserve the ecology and environment of the taluk/district. The major forest resources available in the district are eucalyptus wood, tamarind, gallnut and bamboo. There is scope for wooden furniture, wooden doors and windows, saw mills, and wooden packing cases, etc

1.5 Administrative set up

Mandya district comprises of 7 taluks viz., K.R Pet, Maddur, Malavalli, Mandya, Nagamangala, S.R Patna and Pandavapura. This district was created on 1.7.1939 by bi-furcating Mysore district and Mandya town as Headquarters. There are two sub-divisions. Mandya Sub-division consists of Mandya, Maddur and Malavalli taluks while Pandavapura sub-division consists of K.R Pet, Nagamangala, Pandavapura and Srirangapatna taluks. Incidentally, these two sub-divisions have been adopted without any change by the District Industries Centre (DIC) for the purpose of administering industrial promotion/development work. From 1.4.1987 the general administration of the district including industrial development at the apex is being looked after by the Zilla parishad, which is an elected body.

The President of the Parishad has been accorded the status of a Cabinet Minister of the State. The Zilla Parishad has a Secretariat headed by Senior Govt. Official belonging to IAS designated as Chief Secretary of the Zilla Parishad. Down below, there are various district level officers of the State Government to perform/execute the various regulatory/development functions assigned to them. The DIC is one such district level office headed by an official of the State Government designated as Joint Director with whom a number of functional Managers, Deputy directors and AsstDirectors work for the promotion and development of industrial and commercial enterprises in the district.

1.6 INFRASTRUCTURE

- Mandya has 89,357 hectares under Paddy Cultivation, 79,670 hectares under Ragi Cultivation, 5,938 hectares for Maize, 174,965 hectares for Cereals and Minor Millets, 22,257 hectares for Sugarcane Cultivation and 34,691 hectares under Horticulture crops.
- Commercial Crops, Sugar factories, Milk Processing Units, Paper Mills and Oil extraction contribute to the districts economy
- Land bank : 2,242 acres of land has been identified as land bank at Mandya, Maddur, Srirangapatna and KR Pet.
- Service facilities: 145 commercial banks, 364 post offices and 65 telephone exchanges.
- 5 existing and proposed industrial areas.
- 5 existing and proposed industrial estates in the district.

Power

- Transmission and distribution in the district is being done by Chamundeshwari Electricity Supply Corporation Limited (CESC)
- Mandagere Hydrel Scheme is a 3.5 MW Power Station located downstream of Gorur dam across River Hemavathy in K.R.Pet taluk of Mandya district
- Hydro-Electric power project at Shivanasamudram, the first hydro electric power project in India established in 1902, generates about 42 Megawatts(6x3+4x6MW) electric power.
- Hydro-Electric Power Project at Shimsha established in 1940, generates about 17.2 MW of (2x8.6MW)
- Keelara Power Pvt. Ltd., hydro electric power project at Keelara, Mandya Taluka is commissioned and functioning with 2 MW capacity
- Malavalli Power Plant Private Limited which is an agri based project has a generating capacity of 4.5 MW

Water

- Major rivers are Cauvery, Hemavathi, Shimsha, Lokapavani, Veeravaishnavi, Paschimavahini
- Two major reservoirs Krishnaraja Sagar and Hemavathi
- Hemavathi left bank canal is irrigating parts of K.R.Pet, Nagamangala, Pandavapura and Mandya talukas
- 48% of cultivable area is rain fed
- Total water supply in the district - 21 MLD
- Per capita water supply - 135 LPCD
- Average demand in the district
 - Industry - 2.75 lakh litres/day
 - Domestic - 165 LPCD
- Average consumption in the district
 - Industry - 2.75 Lakh litres/day
 - Domestic - 135 LPCD

2. District at a glance

| S.No | Particular | Year | Unit | Statistics |
|-----------|--|------|----------|------------------|
| 1 | Geographical features | | | |
| (A) | Geographical Data | | | |
| | i) Latitude | | | 12 13' to 13 04' |
| | ii) Longitude | | | 76 19' to 77 20' |
| | iii) Geographical Area | | Hectares | 498244 |
| (B) | Administrative Units | | | |
| | i) Sub divisions | | | 2 |
| | ii) Tehsils | | | 7 |
| | iii) Sub-Tehsil | | | 14 |
| | iv) Patwar Circle | | | 446 |
| | v) Panchayat Simitis | | | |
| | vi) Nagar nigam | | | |
| | vii) Nagar Palika | | | 8 |
| | viii) Gram Panchayats | | | 232 |
| | xi) Revenue villages | | | 1479 |
| | x) Assembly Area | | | 4 |
| 2. | Population (As per Census 2011) | | | |
| (A) | Sex-wise | | | |
| | i) Male | 2011 | Nos | 9,09,441 |
| | ii) Female | 2011 | Nos | 8,99,239 |
| (B) | Rural Population | 2011 | | 1499831 |
| 3. | Agriculture | | | |
| A. | Land utilization | | | |
| | i) Total Area | | Hectare | 498244 |
| | ii) Forest cover | | " | 24765 |
| | iii) Non Agriculture Land | | " | 60906 |
| | v) cultivable Barren land | | " | 21519 |
| 4. | Forest | | | |
| | (i) Forest | | Ha. | 24765 |

| | | | |
|-----------|---|-------------|---------|
| 5. | Livestock & Poultry | | |
| A. | Cattle | | |
| | i) Cows | Nos. | 349977 |
| | ii) Buffaloes | Nos. | 168925 |
| B. | Other livestock | | |
| | i) Goats | Nos. | 244323 |
| | ii) Pigs | Nos. | 6878 |
| | iii) Dogs & Bitches | Nos. | 37338 |
| | iv) Railways | | |
| | i) Length of rail line | Kms | 97.00 |
| | V) Roads | | |
| | (a) National Highway | Kms | 73.00 |
| | (b) State Highway | Kms | 466.86 |
| | (c) Main District Highway | Kms | 2196.7 |
| | (d) Other district & Rural Roads | Kms | 1907.51 |
| | (e) Rural road/ Agriculture Marketing Board Roads | Kms | |
| | (f) Kachacha Road | Kms | 5824.94 |
| | (VI) Communication | | |
| | (a) Telephone connection | Nos. | 53431 |
| | (b) Post offices | Nos. | 364 |
| | (c) Telephone center | Nos. | 64 |
| | (d) Density of Telephone | Nos./1000 | - |
| | (e) Density of Telephone | No. per KM. | - |
| | (f) PCO Rural | No. | 6246 |
| | (g) PCO STD | No. | |
| | (h) Mobile | No. | 88023 |
| | (VII) Public Health | | |
| | (a) Allopathic Hospital | No. | 14 |
| | Beds in Allopathic hospitals | No. | 1810 |
| | (c) Ayurvedic Hospital | No. | 4 |
| | Beds in Ayurvedic hospitals | No. | 43 |
| | (e) Unani hospitals | No. | 7 |
| | Community health centers | No. | |
| | (g) Primary health centers | No. | |
| | (h) Dispensaries | No. | 114 |
| | (i) Sub Health Centers | No. | 23 |
| | (j) Private hospitals | No. | 385 |
| | (VIII) Banking | | |
| | (a) Commercial Bank | Nos. | 71 |
| | (b) rural Bank Products | Nos. | 30 |
| | (c) Co-Operative bank products | Nos. | 1 |
| | (d) PLDB Branches | Nos. | 7 |
| | (IX) Education | | |
| | (a) Primary school | Nos. | 1066 |
| | (b) Middle schools | Nos. | 1102 |

| | | | |
|--|--|------|-----|
| (c) Secondary & senior secondary schools | | Nos. | 438 |
| (d) Colleges | | Nos. | 159 |
| (e) Technical University | | Nos. | 5 |

Source : Directorate of Economics and Statistics

2.1 Existing status of industrial Estates in the district :

| S N o. | Name of the Estate | Land acquire d (In Hectare) | Land Devel oped (In Hecta re) | Preva iling rate per Sqm | Numbers Formed | | Numbers Allotted | | Numbers vacant | | No. of units in production | |
|--------|------------------------|------------------------------|-------------------------------|--------------------------|----------------|---------------|------------------|--------------|----------------|--------------|----------------------------|---------------|
| | | | | | Plot s | Shed s/flat s | Plots | Sheds/fl ats | Plots | She ds/fl at | Plo ts | She ds/fl ats |
| 1 | Mandya 1 st | 10.67 | 10.67 | 2500 | 19 | 44 | 19 | 44 | 0 | 0 | 14 | 36 |
| 2 | Mandya 2 nd | 6.16 | 6.16 | 2500 | 3 | 28 | 3 | 28 | 0 | 0 | 3 | 16 |
| 3 | Tubinak ere | 9.32 | 9.32 | 1100 | 50 | 0 | 44 | 0 | 6 | 0 | 0 | 0 |
| 4 | Srirang apatna | 5.00 | 5.00 | 670 | 3 | 38 | 3 | 35 | 0 | 3 | 1 | 22 |
| 5 | Pandav apura | 5.00 | 5.00 | 315 | 6 | 8 | 6 | 8 | 0 | 0 | 0 | 5 |
| 6 | Nagam angala | 7.77 | 7.77 | 335 | 21 | 8 | 2 | 8 | 19 | 0 | 0 | 8 |
| 7 | Soman ahalli | 3.46 | 3.46 | 410 | 21 | 8 | 21 | 8 | 0 | 0 | 7 | 3 |
| | Total | 47.38 | 47.38 | | 123 | 134 | 98 | 131 | 25 | 3 | 25 | 90 |

Source : KSSIDC - Bangalore

2.2 Existing Status of Industrial Areas in the District .

| S. No. | Name of Ind. Area | Land acquired (In hectare) | Land developed (In hectare) | Prevaili ng Rate Per Sqm (In Rs.) | No of Plots | No of allotted Plots | No of Vacan t Plots | No. of Units in Product ion |
|--------|-------------------|----------------------------|-----------------------------|-----------------------------------|-------------|----------------------|---------------------|-----------------------------|
| 1 | Tubinakere | 141 Acres | 141 Acres | - | 115 | 94 | 21 | 31 |
| 2 | Somanahalli | 154 Acres | 154 Acres | - | 74 | 70 | 4 | 30 |

3 more Industrial Areas are Proposed at Gejjalagere of Maddur Taluk (86 Acres) ; Anagallipura of Srirangapatna Taluk (197 Acres) ; Bannenahalli of K.R.Pet Taluk (275 Acres) in the District.

Two more Industrial Areas are proposed at Bookanare and Bellur. One Industrial Park proposed at KM. Doddi and Malavalli .

Suvarna Karnataka Development Corridor proposes a IT-BT Zone and Apparel Zone covering Mandya District.

Land Bank has been created with 2242 Acres of land in Mandya(400 Acres), Maddur (400 Acres), Srirangapatna(722 Acres) & KR.Pet (720 Acres)Taluks of Mandya District.

Source : KIADB

| Sl. No. | Industrial Area | Extent (Acres) |
|---------|------------------------------------|----------------|
| 1 | Gejjalegere, Maddur taluk | 65 |
| 2 | Toobinakere (Mandya) | 110 |
| 3 | Somanahalli (Maddur) | 135 |
| 4 | Anaghallipura, Srirangapatna Taluk | 131 |

| Sl. No. | Industrial Estate | Extent (Acres) |
|---------|--------------------------------|----------------|
| 1 | Mandya Phase-I & II | 43 & 28 |
| 2 | Ganjam - Srirangapatna taluk | 35 |
| 3 | Somanahalli - Maddur taluk | 8 |
| 4 | Harohalli - Pandavapura taluka | 8 |
| 5 | Nagamangala | 8 |

Source: Invest Karnataka 2016

3. INDUSTRIAL SCENERIO:

3.1 Industry at a Glance

| Sr No | Head | Unit | Particulars |
|-------|----------------------------|----------|-------------|
| 1. | REGISTERED MSMEs | Nos | 11933 |
| 2. | LARGE INDUSTRIAL UNITS | Nos | 9 |
| 3. | TOTAL EMPLOYED IN MSMES | Nos | 59309 |
| 4. | NO. OF INDUSTRIAL AREA | Nos | 4 |
| 5. | NO. OF INDUSTRIAL ESTATE | Nos | 5 |
| 6. | NO. OF INDUSTRIAL PARK | Nos | - |
| 7. | Total investments in MSMES | In lakhs | 52600 |

Source: www.karnatakaindustry.gov.in

3.2 YEAR WISE TREND OF UNITS REGISTERED

| YEAR | NUMBER OF REGISTERED UNITS | EMPLOYMENT | INVESTMENT (lakh Rs.) |
|---------------|----------------------------|------------|-----------------------|
| Up to 2003-04 | 7040 | 32748 | 11640 |
| 2004-05 | 207 | 682 | 565 |
| 2005-06 | 300 | 1401 | 969 |
| 2006-07 | 300 | 1107 | 951 |
| 2007-08 | 322 | 1372 | 645 |
| 2008-09 | 358 | 1588 | 1309 |
| 2009-10 | 413 | 2680 | 2945 |
| 2010-11 | 421 | 1720 | 997 |
| 2011-12 | 436 | 1875 | 2616 |
| 2012-13 | 467 | 2335 | 3362 |
| 2013-14 | 485 | 1689 | 1626 |
| 2014-15 | 562 | 2383 | 2746 |
| 2015-16 | 1058 | 9604 | 22229 |

Source: www.karnatakaindustry.gov.in

Key Industries



Agriculture & Food Processing:

- Annual production of Sugar is 26,00,000 metric tons and that of Jaggery is 10,00,000 metric tons
- There are 35 rice mills, 4 sugar factories and a cluster of jaggery making units in Mandya
- Proposed Food Processing and Sugar zone by the Government of Karnataka(GoK)



Sericulture:

- The area under Mulberry cultivation is 24,000 Hectares
- 22 technical centers for the development of Sericulture
- The district supports more than 40,000 sericulturalists
- Scope for expanding of the area under bivoltine and introducing modern and automatic reeling units



Other Sectors:

- Textiles and Handlooms – There is a Handlooms Cluster in Melkote Taluk
- Strong ecosystem for textile with presence of large organizations like Welspun, Gokaldas, Shahi Exports etc
- Tourism is a key contributor to the districts economy as it houses several places of tourist interest such as temples, islands, falls etc
- Engineering Based – There are 2 clusters of metalware and metal images classical activity in Nagamangala Taluk
- Special Zone industries like-Aromatic, Ayurved medicines, Tools and Dies, filament for bulbs, Hi-tech bus body building, conveyor belts ,coconut tetra packing

3.3 DETAILS OF EXISTING MICRO & SMALL ENTERPRISES AND ARTISAN UNITS IN THE DISTRICT

| NIC CODE NO. | TYPE OF INDUSTRY | NUMBER OF UNITS | INVESTMENT (Lakh Rs.) | EMPLOYMENT |
|--------------|---|-----------------|-----------------------|------------|
| 20 | Agro based | 45 | 230.01 | 224 |
| 22 | Soda water | - | - | - |
| 23 | Cotton textile | 41 | 111.09 | 226 |
| 24. | Woolen, silk & artificial Thread based clothes. | - | - | - |
| 25. | Jute & jute based | - | - | - |
| 26. | Ready-made garments & embroidery | 78 | 30.11 | 190 |
| 27. | Wood/wooden based furniture | 62 | 89.25 | 218 |
| 28. | Paper & Paper products | 2 | 2.8 | 16 |
| 29. | Leather based | 1 | 1 | 2 |
| 31. | Chemical/Chemical based | 8 | 36.26 | 26 |
| 30. | Rubber, Plastic & petro based | 5 | 15.65 | 23 |
| 32. | Mineral based | - | - | - |
| 33. | Metal based (Steel Fab.) | 32 | 82.45 | 140 |
| 35. | Engineering units | 4 | 7.25 | 13 |
| 36. | Electrical machinery and transport equipment | 25 | 115.64 | 131 |
| 97. | Repairing & servicing | 18 | 10.85 | 49 |
| 01. | Others | 89 | 150.80 | 385 |
| | Kachori Making | - | - | - |

Source: www.karnatakaindustry.gov.in (As on 31.03.2016)

3.4 Large Scale Industries / Public Sector undertakings in Mandya & Near By Area :

1. Balaji Malts Private Limited,
2. Mysugar Ltd.,
3. Graphite India Ltd.,
4. Chamundeshwari Sugars Ltd.,
5. Welspun Corp Ltd.
6. Kleane Pack Ltd.
7. Shahi Exports
8. Gokuldas Exports
9. ICL Sugars
10. NSL Sugars
12. M. K. Agro tech
13. Hiten Fastners
14. Malavalli Power Plant Ltd

3.5 Major Exportable Item

Sugar, Jaggery , Rice, edible Oils, Paper, Milk Products, Solvent extractions.

3.6 Growth Trend

Emerging hub for Agro & Food processing industries, Sericulture, Power Generation, Textiles and Handlooms, Engineering Based, Hightech bus body Building, Conveyor belts, IT & BT , Readymade Garments, Automobiles, Aerospace Garments, etc

3.7 Vendorisation / Ancillarisation of the Industry

Food Processing , Sugar & Jaggery Factories

3.8 Major Exportable Item

Sugar, Jaggery , Rice, edible Oils, Paper, Milk Products, Solvent extractions.

3.9 Service Enterprises

IT Hub

3.9.1 Potentials areas for service industry

IT Hub

3.10 Potential for new MSMEs

Agriculture & Food Processing:

- Emerging hub for Agro and food processing industries
- Annual production of Sugar is 26,00,000 MT and Jaggery is 10,00,000 MT
- There are 35 rice mills, 4 sugar factories and a cluster of jiggery making units in Mandya
- Houses the oldest sugar factory in Karnataka, with a crushing capacity of 5,000 tons of cane per day
- Sugar mills, rice mills, oil mills, milk and dairy based units, edible oil extraction units are small scale food processing units in Mandya

Sericulture:

- Ranks 3rd in Karnataka for its Sericulture produce
- The area under Mulberry cultivation is 24,000 hectares
- 22 technical centers for the development of sericulture
- The district supports more than 40,000 sericulturists
- Scope for expanding of the area under bivoltine and introducing modern and automatic reeling units

Other Sectors:

Textiles and Handlooms

- There is a Handlooms Cluster in Melkote taluka
- Strong ecosystem for textile with presence of large organizations like Welspun, Gokaldas, Shahi Exports etc

Tourism is a key contributor to the districts economy as it houses several places of tourist interest such as temples, islands, falls etc

Engineering Based – There are 2 clusters for Metalware and Metal images in Nagamangala Taluka

- Special Zone industries like-Aromatic, Ayurved medicines, Tools and Dies, filament for bulbs, Hi-tech bus body building, conveyor belts ,coconut tetra packing

4. Existing Clusters of Micro & Small Enterprise

4.1 DETAIL OF MAJOR CULSTERS

4.1.1 Manufacturing Sector

- a. Rice mills cluster Mandya District:- DPR is under preparation and GOI has released Rs. 2.3 lakhs for the preparation of the report.
- b. Agriculture Implements cluster, K.M. Doddi, Mandya Districts: DSR has been approved and GOI has sanctioned Rs. 4.5 lakhs for Soft interventions and SPV contribution is around Rs. 0.65 lakhs.
- c. Kaveri Packaging cluster, Mandya District: In principle DPR has been approved. GOI sanctioned Rs. 12 cr, GoK has sanctioned Rs. 1.5 cr and SPV has contributed Rs.2.52 cr.

Name of the Cluster : Kaveri Packaging cluster, Mandya District

| | | |
|----|--|---|
| 1 | Principal Products Manufactured in the Cluster | Corrugated boxes |
| 2 | Name of the SPV | Kaveri Packaging cluster |
| 3 | No. of functional units in the clusters | 50 Units |
| 4 | Turnover of the Clusters | Rs. 15 Cr |
| 5 | Value of Exports from the Clusters | NA |
| 6 | Employment in Cluster | 350 |
| 7 | Average investment in plant & Machinery | Rs. 20 lakhs per unit |
| 8 | Major Issues / requirement | Infrastructure, Technology, Lack of Testing centres |
| 9 | Presence of capable institutions | -- |
| 10 | Thrust Areas | Manufacturing of Corrugated Boxes |
| 11 | Problems & constraints | Skilled Labour & Lack of Quality |

5. STEPS TO SET UP MSMEs:

Following are the brief description of different agencies for rendering assistance to the entrepreneurs.

| S.No. | Type of assistance | Name and address of agencies |
|-------|--|--|
| 1. | Registration of MSMEs | Online Registration. www.udyogaadhaar.gov.in Director, MSME-Development Institute Ministry of MSME, Govt. of India, Rajaji Nagar Industrial Estate, West of Chord Road, Bangalore. 560010 ☎ Phone : 080-23151581/82/83 ✉ e-mail: dcdi-bang@dcmsme.gov.in www.msmedibangalore.gov.in |
| 2. | Identification of Project Profiles, Techno-economic and Managerial consultancy Services , Market survey and economic survey reports. | MSME-Development Institute Ministry of MSME, Govt. of India, Rajaji Nagar Industrial Estate, West of Chord Road, Bangalore. 560010 ☎ Phone : 080-23151581/82/83 ✉ e-mail: dcdi-bang@dcmsme.gov.in www.msmedibangalore.gov.in Chief Executive Officer & Chief Adviser Technical Consultancy Services Organisation of Karnataka (A Govt. of Karnataka Organisation) 4 th Floor, Basava Bhavan, Basaveshwara Circle, Bangalore 560 001. ☎ Phone : 080-22266134/2226152/41512382 ✉ e-mail: tecsok1@airtelmail.in www.tecsok.com |
| 3. | Industrial Land | Chief Executive Officer & Executive Member Karnataka Industrial Areas Development Board (KIADB) 4 th & 5 th Floor, East Wing, Khanija Bhavan, Race Course Road, Bangalore. – 560001 ☎ Phone : 080-22265383/22267900 ✉ e-mail: kiadb@mail.nic.in www.kiadb.in |
| 4. | Industrial Shed | Chairman Karnataka State Small Industries Development Corporation Limited., (KSSIDC), Rajaji Nagar Industrial Estate, West of Chord Road, Bangalore. 560010 ☎ Phone : 080-23407011 www.kssidc.kar.nic.in |
| 5. | Financial Assistance | All Nationalized Banks Karnataka State Financial Corporation (KSFC) No. 153/A, Near DC Office, Opp. Mount Carmel Convent, k.R. Road, Subhash Nagar, Mandya-571401 ☎ Phone : 08232-226744/226745 ✉ e-mail: mnd@ksfc.in www.ksfc.in |
| 6. | For Raw Materials under Govt. Supply | Chairman Karnataka State Small Industries Development Corporation Limited., (KSSIDC) Rajaji Nagar Industrial Estate, West of Chord Road, Bangalore. 560010 ☎ Phone : 080-23407011 www.kssidc.kar.nic.in General Manager National Small Industries Corporation (NSIC) No. 25, First Main Road, KSSIDC Industrial Estate, 6 th Block, Rajaji Nagar, Bangalore. 560010 ☎ Phone : 080-23109059/23307791/23147858 ✉ e-mail: boban@nsic.co.in www.nsic.co.in |
| 7. | Plant & Machinery under hire/purchase basis | General Manager National Small Industries Corporation (NSIC) No. 25, First Main Road, KSSIDC Industrial Estate, 6 th Block, Rajaji Nagar, Bangalore. 560010 ☎ Phone : 080-23109059/23307791/23147858 ✉ e-mail: boban@nsic.co.in www.nsic.co.in |

| | | |
|-----|-------------------------------|--|
| 8. | Power / Electricity | CESC,Mysore |
| 9. | Technical Know-How | Managing Director Karnataka Council for Technological Upgradation (KCTU) 4th Floor, Basava Bhavan, Basaveswara Circle, Bangalore - 560001 ☎ Phone : 080-22250722 ✉ e-mail: md-kctu-ka@nic.in ✉ e-mail: info-kctu-ka@nic.in www.kctu.kar.nic.in |
| 10. | Quality & Standard | Scientist 'F' & Head Bureau of Indian Standards (BIS) Peenya Industrial Estate, 1 st Stage, Tumkur Road, Bangalore-560058 ☎ Phone : 080-28394955/283949656 ✉ e-mail: bnbo@bis.gov.in www.bis.org.in |
| 11. | Marketing & Export Assistance | Visvesvaraya Trade Promotion Centre (VTPC) III Floor, 'A' Block, BMTC Complex, Shantinagar, Double Road, Bangalore -560027. ☎ Phone 080-22230853 / 22210633 / 22534444 ✉ e-mail: md@vtpckarnataka.gov.in www.vtpckarnataka.gov.in Engineering Export Promotion Council (EEPC) Sub-Regional Office, 2 nd Floor, Vinayaka Complex, 44/45 Residency Road Cross, Bangalore- 560025 ☎ Phone : 080-25581396/25588619 ✉ e-mail: eepcsroblr@eepecindia.net www.eepecindia.com EXIM Bank India Ramanashree Arcade, Floor 4, 18 M G Road, Bangalore. ☎ Phone : 080-25585755 ✉ e-mail: eximbro@eximbankindia.in www.eximbankindia.in |
| 12. | Other Promotional Agencies | Managing Director Karnataka Udyog Mitra 3rd Floor, Khanija Bhavan (East Wing), No.49, Race Course Road, Bangalore – 560 001 ☎ Phone : 080-22282392/2228 5659/2238 1232/2228 6632 ✉ e-mail: md@kumbangalore.com www.kum.karnataka.gov.in |

6. Any other important additional information of the district :

TOURISM :

Shivasamudram Island: In the tiny island town of Shivasamudram the River Cauvery meanders to fall into cascading Shivasamudram Falls. This sparkling waterfalls flows through the abundant sylvan forest of Karnataka in Deccan Plateau, plunges 320 feet into gorge into a spate, breaking into a cloud of misty foam.

Srirangapatnam Island: Situated on the Cauvery River, the island-fortress of Srirangapatana is famous as the former capital of the great kings, Hyder Ali, and his son, Tipu Sultan, the 'Tiger of Mysore'. The ruins of the magnificent fortress is the main tourism attraction.

Karighatta Temples is a hill situated a few kilometres outside the 'island' town of Srirangapatna. It is situated off the Bangalore-Mysore road just before Srirangapatna. The name translates to "Black Hill" in Kannada.

Melukote Temple is located near Mysore in Karnataka houses an ancient shrine to Vishnu, worshipped as Tiru Narayana. This shrine is known for its long standing association with the spiritual leader Ramanujacharya.

Srirangapatna Temples is a city of historic, religious, and cultural hub situated in Mandya district of Karnataka, just about 13kms from Mysore, a place to see on Bangalore- Mysore Highway.

Hemagiri Falls: This place is located 8 Kms from KR pet en-route to Kikere town or Govindhalli.

Brindavan Gardens (43 KMs) : The Brindavan Gardens is situated at the base of the Krishnaraja Sagar Dam built across the river Kaveri. The terraced Brindavan Gardens, with swirling fountains and illuminated by colourful lights, looks like a fairy land at night. Boating facilities are also available here.



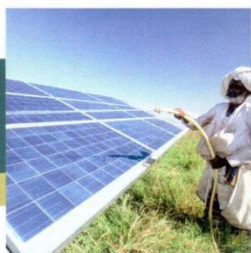
MSME SCHEMES

MSME OPERATES A NUMBER OF PROMOTIONAL SCHEMES FOR THE MSE SECTOR:

- ▲ Credit Linked Capital Subsidy Scheme for Technology Upgradation (CLCSS)
- ▲ Credit Guarantee Fund Trust for Micro and Small Enterprises (CGTMSE)
- ▲ ISO 9001/ISO 14001 HACCP Certification Reimbursement Scheme.
- ▲ Cluster Development Programme for identified Cluster of MSE's
- ▲ Market Development Assistance International Trade Fairs (For Individual MSEs)
- ▲ National Awards for outstanding MSME Entrepreneurs, R&D efforts in MSME Sector
- ▲ Quality products in MSE sector and Innovation effort (For Individual MSMEs)
- ▲ TREAD Scheme for Women (Individual Regd. Association & NGOs)
- ▲ Capacity Building/ Seminar for Industrial Associations
- ▲ Public Procurement Policy - MSEs 2012

NATIONAL MANUFACTURING COMPETITIVENESS PROGRAMME (NMCP) SCHEMES FOR MSMEs UNDER PPP MODEL:

- ▲ Marketing Support / Assistance to MSMEs (BAR Code)
- ▲ Support for Entrepreneurial and Managerial Development of MSMEs through Incubators
- ▲ Enabling Manufacturing Sector to be Competitive through Quality Management Standards & quality Technology Tools (QMS/QTT)
- ▲ Building Awareness on Intellectual Property Rights for MSMEs (IPR)
- ▲ Lean Manufacturing Competitiveness Scheme for MSMEs (LMCs)
- ▲ Design Clinic Scheme for design expertise to MSMEs Manufacturing sector (DESIGN)
- ▲ Marketing Assistance and Technology Upgradation Scheme for MSMEs (MATU)
- ▲ Technology and Quality Upgradation support to MSMEs (TEQUP)
- ▲ Promotion of Information & Communication Technology in Indian MSME Sector (ICT)



Government of India

Ministry of Micro, Small & Medium Enterprises

MSME DEVELOPMENT INSTITUTE

Rajajinagar Industrial Estate, Bengaluru - 560 010, Karnataka, India

T: 080 23151581-82-83 | F: 080 23144506

E: dcdi-bang@dcmsme.gov.in | W: www.dcmsme.gov.in

For more details visit our website:

www.msmedibangalore.gov.in