



Government of India  
Ministry of MSME

## DISTRICT INDUSTRIAL PROFILE



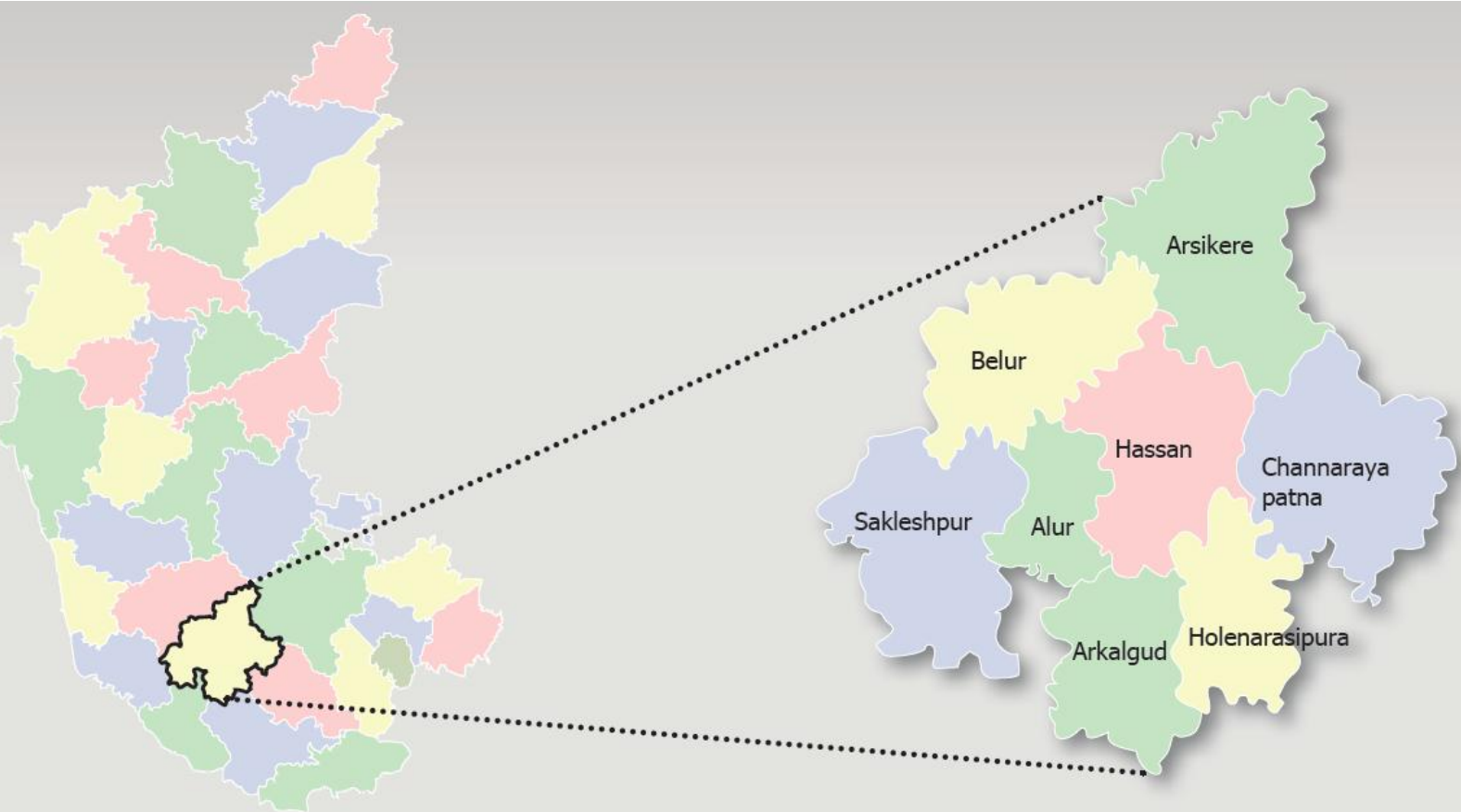
# HASSAN

**..the epitome of sculptures**



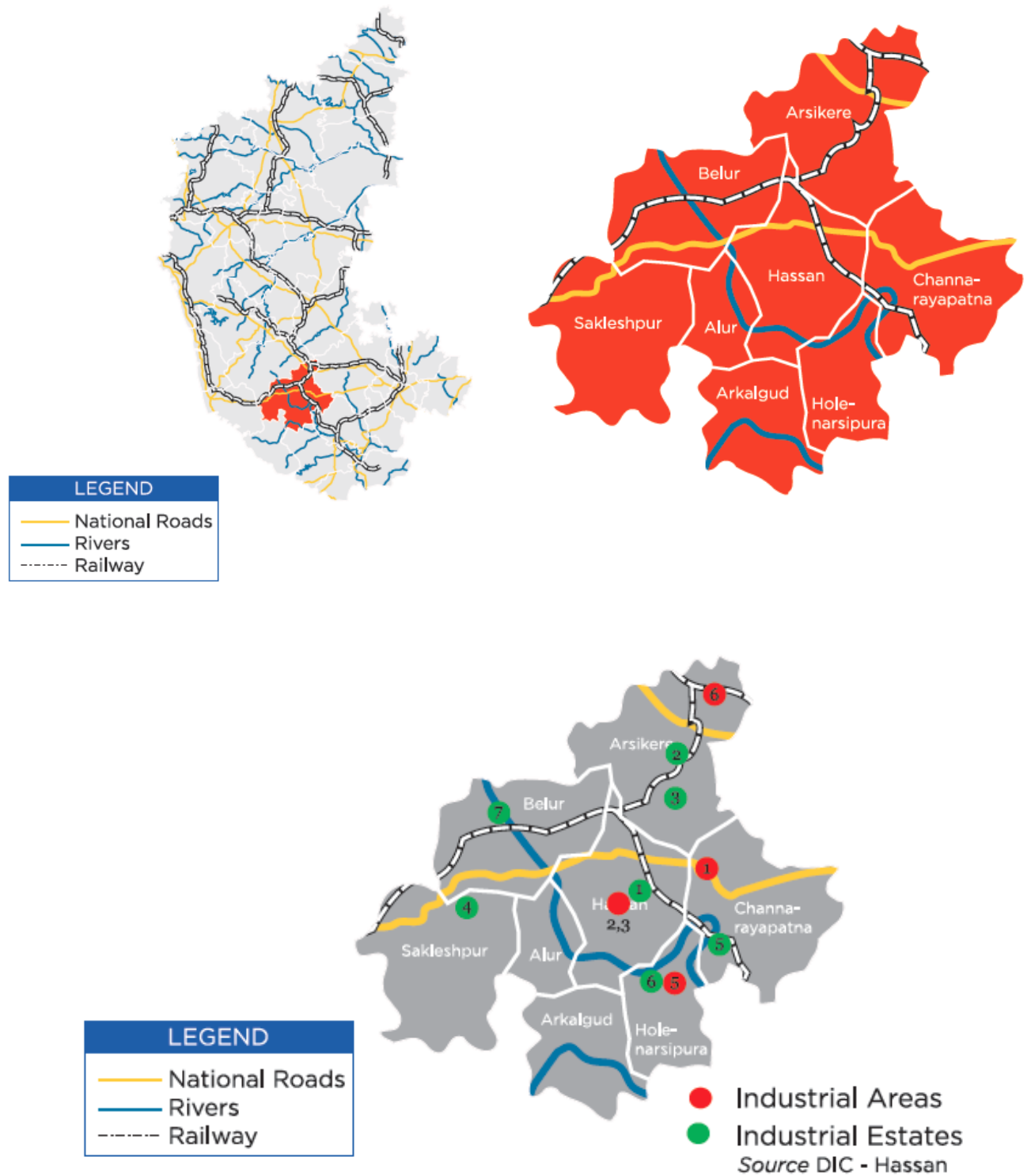
**MSME-Development Institute**  
(Ministry of MSME, Govt. of India)  
Rajaji Nagar Industrial Area, Bengaluru. - 560010  
Ph: 91 080 23151581, 82, 83  
Fax: 91 080 23144506  
e-Mail: [dc-di-bang@dcmsme.gov.in](mailto:dc-di-bang@dcmsme.gov.in)  
[www.msmedibangalore.gov.in](http://www.msmedibangalore.gov.in)

## HASSAN DISTRICT & ITS TALUKS



# District Overview

## Hassan District



## **FOREWORD**

The Micro, Small and, Medium Enterprises, Development Institute (earlier called SISI), under Ministry of MSME, Govt. of India, Bangalore is one of the prime organizations in Karnataka, engaged in the promotion and development of Industries in the Micro, Small and Medium Enterprises. As a part of the promotional and developmental activities, the Institute conducts studies on the Status and performance of Micro, Small and Medium Enterprises in the State. The District profile is one such report compiled and updated under District Industry Development Plan of the Institute assigned by Office of the Development Commissioner (SSI), New Delhi. This report contains the present status of economy, geographical information, statistical data relating to MSME's in each district, salient features of the progress of the different sectors of the each district of Karnataka and performance of industries particularly in Micro, Small and Medium industries.

I am happy to appreciate the efforts put in by all the officers and staff in this institute especially Shri. Rajkumar, IES, Deputy Director (EI), Smt. Neethu. K. Thomas, ISS, Assistant Director, Shri. D.Nataraja, Assistant Director (Stat), Shri.K.M.Balajee, Assistant Director (EI), Shri. Rajendran.B, Assistant Director (Hosiery), Shri. A. Shivakumar, Assistant Director (Mech), Smt. Sruthi G K, Assistant Director (EI), Shri. R. Anbu Kumaran, Assistant Director (IMT) in collecting the latest information available from different departments of Government of Karnataka and in bringing out this Industrial Profile report. I would also like to thank all Joint Directors of District Industry Centres, Senior Officers of Statistics Division of Govt. of Karnataka, Director of Industries and Commerce, for their valuable inputs during the preparation of this document. I sincerely hope that this report will be useful to all concerned with the development of Industries. It is needless to state that this document will serve as a valuable guide to the prospective entrepreneurs who are desirous of setting up of industries/enterprises in the state.

**BANGALORE**  
**15.06.2016**

**(S.N.RANGA PRASAD)**  
**Director**

## Table of Contents

<b>S. No.</b>	<b>Topic</b>	<b>Page No.</b>
1.	Introduction & General Characteristics of the District	6
1.1	Location & Geographical Area	6
1.2	Topography	6
1.3	Availability of Minerals.	6-7
1.4	Forest	7
1.5	Administrative set up	7
1.6	Infrastructure	7
2.	District at a glance	8-9
2.1	Existing Status of Industrial Area in the District	10
2.2	Existing Status of Industrial Estate in the District	10
3.	Industrial Scenario Of the district	11
3.1	Industry at a Glance	12
3.2	Year Wise Trend Of Units Registered	12
3.3	Details Of Existing Micro & Small Enterprises & Artisan Units In The District	13
3.4	Large Scale Industries / Public Sector undertakings	13-14
3.5	Major Exportable Item	14
3.6	Growth Trend	14
3.7	Vendorisation / Ancillarisation of the Industry	14
3.8	Medium Scale Enterprises	14
3.8.1	List of the units in the district & near by Area	14
3.8.2	Major Exportable Item	15
3.9	Service Enterprises	15
3.9.2	Potentials areas for service industry	15
3.10	Potential for new MSMEs	15
4.	Existing Clusters of Micro & Small Enterprise	16
4.1	Detail Of Major Clusters	16
4.1.1	Manufacturing Sector	16
4.1.2	Service Sector	16
4.2	Details of Identified cluster	16
5	Steps to set up MSMEs	17-18
6.	Additional information if any	18-20

## **Industrial Profile of Hassan District**

### **1. Introduction & General Characteristics of the District:**

- Located in southern eastern part of Karnataka and 194 Kms away from the state capital Bengaluru.
- Spread across 8 Talukas-Alur, Arkalgud, Arsikere, Belur, channarayapatna, Hassan, H.N. Pura and Sakleshpur.
- Rich producer of spices, cardamoms, coconuts and coffee.
- District lies partly in the 'malnad' tract and partly in the southern plains region.
- Was under the reign of Mouryas of North in the Third BC and later ruled by great kingdoms of Kadambas, Chalukyas, Gangas, Hoysalas and Vijayanagar empire.
- An ancient dynasty 'Hoysalas' imbibed the art of making temples and sculptures in the region and contributed in a renowned tourist place.
- Famous Tourist Places - Belur, Halebeed, Shravanabelagola & Others.
- The district is acknowledged as an Industrial Growth Centre along with 4 developed industrial areas and 4 Special Economic Zones.
- Master Control Facility of ISRO is located in this district.

**1.1: Location & Geographical Area. :** Lying between 12° 13' and 13° 33' North latitudes and 75° 33' and 76°38' East longitude, Hassan district has a total area of 6826.15 Sq. Kms. The greatest length of the district, from south to north, is about 129 kilometers, and its greatest breadth, from east to west, is about 116 kilometers. The District which has 8 taluks 38 hoblies & 2369 villages. The geographic area of the district of Hassan is 6845 square kilometers. The population is 5.67 lakhs and the average rainfall is about 1031 mms annually. Coffee, Black Pepper, Potato, Paddy and Sugarcane are the major agricultural crops. The District covers 8 taluks in this area. Located southern eastern part of Karnataka. Bounded by Tumkur, Chickmagalur, Dakshina Kannada and Mandya districts Rich producer of spices & condiments. Well known for its tourist & coffee production

### **1.2 Topography :** Temperature: 35° C (Max.) and 20° C (Min.)

Average	: Rainfall 1031 mm
Rivers	: Hemavati and Cauvery
Area	: 6826 sqm

Hassan District is covered by metamorphic and igneous rocks, viz., peninsular gneisses close pet granites and Bababudan group schists. Red loamy, sandy and black mix red soil constitute crust zone. 8.9% of the geographical area is covered by forests.

### **1.3 Availability of Minerals.:**

Geologically Hassan district forms a part of Precambrian terrain. The Major litho units are granitic gneiss, granulites, granites, Dharwarian schists and dyke rocks. The most important rock formation of the district are Nuggehalli and Holenarasipura Schist belt. These two schist belts are the host of number of mineral deposits like Chromite, Titaniferous magnetite, Chalcopyrite, Kaolin, Asbestos, Quartz etc.

## PRODUCTION OF MINERAL

S.NO.	NAME OF MINERAL	PRODUCTION in tones 2010-2011
1.	Moulding Sand	53208
2.	Quartz	1024

( SOURCE:- DEPT. OF MINES & GEOLOGY)

### 1.4 FOREST:

The types of forests, area covered (ha), administrative units & details of flora & fauna of hassan district are dealt hear under. The total area covered under Forest is 89885.28 acres

### 1.5 Administrative set up. :

The district administration is headed by the Deputy Commisioner, Hassan, who is head quartered at Hassan . Hassan district consists of 2 revenue sub-divisions: Hassan and Sakaleshpur. Hassan Sub-division includes Hassan, Arasikere, Holenarasipura and Channarayapatna Taluks, whereas Sakaleshpur Sub- division Comprises of Alur, Arkalgud,Belur and Sakaleshpur. Hassan Sub-division has its headquarters at Hassan and Sakaleshpur Sub-Division at Sakaleshpur.

### 1.6 Infrastructure:

#### Power

- Average Demand in the district (both industry and domestic demand) - 177392 MU
- Transmission and distribution in the district is being done by Chamundeshwari Electricity Supply Corporation Limited (CESC), Mysuru
- Hassan Biomass Power Company has set up 8MW Renewable Source Biomass Power Project in the district
- Hassan Thermal Power (P) Ltd. (HTPL) has set up 2×660 MW, imported coal based power plant near Hassan

#### Water

- Average demand in the district is 1 MGD
- Total supply capacity is 2.5 MGD
- Three important rivers namely Cauvery, Hemavathi and Yagachiare flowing in this district
- Hemavathy reservoir at Gorur is the main dam, Yagachi and Vatehole are the other two small reservoirs in the district
- The net irrigated area to the net area sown is 20 %



## 2. District at a glance

S.No	Particular	Year	Unit	Statistics
<b>1</b>	<b>Geographical features</b>			
(A)	<b>Geographical Data</b>			
	i) Latitude	12° 13' and 13° 33' North latitudes		
	ii) Longitude	75° 33' and 76°38' East longitude		
	iii) Geographical Area		Hectares	662602
(B)	<b>Administrative Units</b>			
	i) Sub divisions		Nos	2
	ii) Tehsils		Nos	8
	iii) Sub-Tehsil		Nos	16
	iv) Patwar Circle		Nos	38
	v) Panchayat Simitis		Nos	23
	vi)Nagar nigam		Nos	2
	vii) Nagar Palika		Nos	9
	viii) Gram Panchayats		Nos	258
	xi) Revenue villages		Nos	2559
	x) Assembly Area		Nos	7
<b>2.</b>	<b>Population (As per Census 2011)</b>			
(A)	Sex-wise			
	i) Male	2011	Nos	8,85,807
	ii) Female	2011	Nos	8,90,414
(B)	Rural Population	2011	Nos	14,16,996
<b>3.</b>	<b>Agriculture</b>			
A.	Land utilization			
	i) Total Area		Hectare	662602
	ii) Forest cover		Hectare	58775
	iii) Non Agriculture Land		Hectare	78810
	v) cultivable Barren land		Hectares	30365
<b>4.</b>	<b>Forest</b>			
	(i) Forest		Hectares.	58775
<b>5.</b>	<b>Livestock &amp; Poultry</b>			
A.	<b>Cattle</b>			
	i) Cows		Nos.	633535
	ii) Buffaloes		Nos.	191484
B.	<b>Other livestock</b>			
	i) Goats		Nos.	201205
	ii) Pigs		Nos.	2489
	iii) Dogs & Bitches		Nos.	71508
	iv) <b>Railways</b>			
	i) Length of rail line		Kms	246.00
	V) <b>Roads</b>			
	(a) National Highway		Kms	252.16
	(b) State Highway		Kms	985.21
	(c) Main District Highway		Kms	3071.35



	(d) Other district & Rural Roads		Kms	1364.9
	(e) Rural road/ Agriculture Marketing Board Roads		Kms	Incl. in item (d)
	(f) Kachacha Road		Kms	5798.32
	<b>(VI) Communication</b>			
	(a) Telephone connection		Nos	38958
	(b) Post offices		Nos.	421
	(c) Telephone center		Nos.	104
	(d )Density of Telephone		Nos./1000 person	NA
	(e) Density of Telephone		No. per KM.	NA
	(f) PCO Rural		No.	NA
	(g) PCO STD		No.	NA
	(h) Mobile		No.	188213
	(a) Allopathic hospital		Nos	22
	(b) No. of beds in allopathic Hospitals		Nos	2370
	(c) Ayurvedic hospitals		Nos	5
	(d) No. of beds in Ayurvedic Hospitals		Nos	57
	(e) Unani hospitals		Nos	1
	(f) Comm Health centres		Nos	14
	(g) Primary health centres		Nos	137
	(h) Dispensaries		Nos	44
	(i) Sub health centres		Nos	456
	(j) Pvt.Hospitals		Nos	34
	<b>(VIII) Banking commercial</b>			
	(a) Commercial Bank		Nos.	87
	(b) rural Bank Products		Nos.	45
	(c) Co-Operative bank products		Nos.	3
	(d) PLDB Branches		Nos.	8
	<b>(IX) Education</b>			
	(a) Primary school		Nos.	1663
	(b) Middle schools		Nos.	1308
	(c) Secondary & senior secondary schools		Nos.	516
	(d) Colleges		Nos.	182
	(e) Technical University		Nos.	2

Source : Directorate of Economics and Statistics

## 2.1 Existing status of Industrial Areas in the district.

S No	Name of the Estate	Land acquired (In acres)	Land Developed (In acres)	Prevailing rate per acre (in lakhs)	Numbers Formed	Numbers Allotted	Numbers vacant	No. of units in production
1	B.Katihalli Indl.area	94.70	77.95	7.50	86	86	0	71
2	HN Pura	28.38	24.38	5.00	19	19	0	08
3	Thimman halli	75.03	59.25	10.00	14	09	05	02
4	Spl.Economic Zone	1399.77	1042.29	21.75	111	16	95	06
5	Indl. Growth Centre	951.55	619.58	28.00	294	289	5	152

Source : KIADB/DIC- Hassan

## 2.2 Existing status of Industrial Estates in the district.

S No	Name of the Estate	Land acquired (In acres)	Land Developed (In acres)	Prevailing rate per Sqm	Numbers Formed		Numbers Allotted		Numbers vacant		No. of units in production	
					Plots	Shed /flats	Plots	Shed /flats	Plots	Sheds /flat	Plots	Sheds /flats
1	Hassan	25.25	25.25	750	69	64	69	62	0	2	63	40
2	Arsikere	13.14	13.14	395	38	8	33	8	5	0	12	7
3	HN Pura	5.00	5.00	220	10	18	10	18	0	0	8	0
4	CR Patna	2.00	2.00	385	4	10	4	10	0	0	3	9
5	SK Pura	10.00	10.00	640	38	12	36	10	2	2	12	10
6	Gandsi	3.50	3.50	220	20	8	16	1	4	7	0	0
7	Belur	10.00	10.00	220	44	0	44	0	0		0	0

Source : KSSIDC/DIC- Hassan

Sl. No.	Industrial Area	Extent (acres)
1	B. Kattihalli	93
2	Growth Center – Sub Layout	102
3	Hassan Growth Center	489
4	Sub Layout (IOCL)	50
5	Holenarasipura	29
6	Thimmanahalli	75

Sl. No.	Industrial Estate	Extent (acres)
1	Hassan	25
2	Arasikere	13
3	Gandasi	3.5
4	Sakleshpura	10
5	Channarayapatna	2
6	Holenarasipura	5
7	Belur	10

### 3. INDUSTRIAL SCENERIO OF HASSAN DIST.

#### Key Industries



##### Agriculture and Food Processing

- District has a strong agriculture base facilitating Agro & Food processing industries.
- New 300 MT Cattle Feed Plant has been set up at Hassan.
- District has a dedicated 265 acres food processing SEZ for export oriented units.
- It is one of the major producer of coffee in the state



##### Textile and handloom industries:

- Existing Textiles Zones in the district with an investment of US \$ 114.69 million (INR 551 Crores) providing employment to 2,390 persons.
- 614.17 acres of dedicated textile SEZ has been promoted by KIADB in the district.
- US \$ 83 million (INR 398 Crores) Greenfield Project by Himatsingka seide lenin. Is also under implementation.



##### Pharmaceuticals:

- A pharmaceutical SEZ has been promoted in the district by KIADB to the extent of 270 acres with an investment of INR 43 crores and providing employment for 25,000 people.



##### Other Sectors Electrical/ Electronics:

- Presence of a dedicated SEZ with a total investment of INR 686 crore for Electronic Hardware – IT/ ITES provides a conducive environment for export oriented units in the district.

### 3.1 Industry at a Glance

Sr No	Head	Unit	Particulars
1.	REGISTERED MSMEs	Nos	15145
2.	LARGE INDUSTRIAL UNITS	Nos	7
3.	TOTAL EMPLOYED IN MSMES	Nos	32050
4.	NO. OF INDUSTRIAL AREA	Nos	6
5.	NO. OF INDUSTRIAL ESTATE	Nos	7
6.	NO. OF INDUSTRIAL PARK	Nos	--
7.	Total investments in MSMES	In lakhs	40079

### 3.2 YEAR WISE TREND OF UNITS REGISTERED

YEAR	NUMBER OF REGISTERED UNITS	EMPLOYMENT	INVESTMENT (lakh Rs.)
2004-05	467	2139	2403
2005-06	562	2995	3823
2006-07	485	2296	2823
2007-08	415	3722	4402
2008-09	484	2038	2560
2009-10	544	1604	1127
2010-11	642	1541	1872
2011-12	665	1663	4522
2012-13	738	2952	5166
2013-14	732	2514	3260
2014-15	661	2220	2316
2015-16	511	3414	5805

Source: District Industry Centre, Hassan

### 3.3 DETAILS OF EXISTING MICRO & SMALL ENTERPRISES AND ARTISAN UNITS IN THE DISTRICT

NIC CODE NO.	TYPE OF INDUSTRY	NUMBER OF UNITS	INVESTMENT (Lakh Rs.)	EMPLOYMENT
20	Agro based, Food and Beverages	2013	6985.41	11172
22				
23	Cotton textile	192	452.00	438
24 & 26	Woolen, silk & artificial Thread based clothes. Garments	1792	2322.14	5637
25.	Jute & jute based	-	-	-
27.	Wood/wooden based furniture	2020	2708	7031
28.	Paper & Paper products, printing	234	696.61	1050
29.	Leather based	333	378.74	1420
31.	Chemical/Chemical based	360	939.28	1715
30.	Rubber, Plastic & petro based	223	589.9	991
32.	Mineral based	214	2334.15	1433
33.	Metal based (Steel Fab.)	86	346.56	402
35.	Engineering units	799	1831.18	3199
36.	Electrical machinery and transport equipment	472	875.77	1858
	Automobiles	78	200.03	272
	Ferrous and non ferrous	32	52.87	84
97.	Repairing & servicing	732	1070.06	2857
01.	Others	1102	1702.07	3642
	Kachori Making	-	-	-

Source: District Industry Centre, Hassan(As on 31.03.2016)

### 3.4 Large Scale Industries / Public Sector undertakings

Sl.No	Name of the unit	Products	Investment (in Crores)	Employment
1	Hassan Halu Utpadakara Sahakara Sanghagala Okkuta BM Road, Hassan	Milk process and milk products	15.27	413
2	Hassan Halu Utpadakara Sahakara Sanghagala Okkuta BM Road, Hassan	Cattle Feeds	16.00	82

3	Chamundeswari Sugars Pvt.Ltd., Srinivasapura Channarayapatna	Sugar crystals	14.45	484
4	Go Go international Pvt.Ltd., Indl Growth Centre, Hassan	RM Garments	40.47	760
5	Himmatsingh Lenins Pvt.Ltd., Textile zone, Hassan	Lenin products	442.22	1927
6	Petronet MHB LTd., plot No. 1A, Indl.Growth Centre, Hassan	Petroleum Products	48.80	14
7	Allana CoffeeCuring Works, HN Pura Road, Hassan	Coffee curing	7.59	228

### 3.5 Major Exportable Item

Coffee and Cordamum are indirectly exported through important Metropolitan Cities like Bangalore, Mangalore and Chennai . Garments are also exported from SEZ units.

**3.6 Growth Trend :** The District has major strength for Development and promotion of Industries which are summarized as under.The district is ideally located in the State of Karnataka, in terms of its excellent climatic condition and labour harmony.The district has strong agricultural base. The district good technical man power is available. Infrastructure facilities are established in the district. There is growth due to establishment of industrial areas and many small scale industries can start production in Gherkins, and food related industries.

### 3.7 Vendorisation / Ancillarisation of the Industry :

Ancillaries in the field of Engg. IT related enterprises, and food products can be established in this district.

### 3.8. Medium Scale Enterprises

#### 3.8.1 List of the units in the district & Near By Area

Sl.No	Name of the unit	Products	Investment (in Crores)	Employment
1	Harayana Steels and Powers, Kenchanahalli, Hassan	Sponge Iron	28.83	51
2	HPCL Plot No.1A, Indl Growth Centre, Hassan	Petroleum products	71.40	14
3	Calypso Foods Pvt. Ltd., Hassan	Gherikin products	8.80	68

#### 3.8.2 Major Exportable Item : Gherikin products

### 3.9 Service Enterprises

### **3.9.1 Potentials areas for service industry**

Good scope for ITES based, Engg. Based service industries to cater needs of the growing large scale and medium scale industries.

### **3.10 Potential for new MSMEs :**

#### **Agriculture & Food Processing:**

- Around 70% of the population is under agricultural dependence. District has a strong agriculture base facilitating Agro & Food processing Industries
- New 300 MT cattle feed plant has been set up at Hassan
- District has dedicated 265 acres Food Processing SEZ for export oriented units
- It is one of the major producer of coffee in the State
- The district is recognized as agri export zone

#### **Electrical/ Electronics:**

- Presence of a dedicated SEZ with a total investment of INR 686 Crore for Electronic Hardware and IT/ ITES providing a conducive environment for export oriented units in the district
- Master Control Facility of ISRO is located in this district

#### **Textile and handloom industries:**

- Existing Textiles Zones in the district with an investment of USD 114.69 million (INR 551 Crore) providing employment to 2,390 persons
- 614 acres of dedicated textile SEZ has been promoted by KIADB in the district.
- 3 purely export oriented textile units working in textile SEZ

#### **Pharmaceuticals:**

- A pharmaceutical SEZ has been promoted in the district by KIADB to the extent of 270 acres with an investment of INR 43 Crore and providing employment for 25,000 people

Many products required for the district are coming from outside the places like Bangalore, Chennai, Mumbai, Gujarath, Punjab, etc., few examples are Potato Chips, Instant Coffee, Rubberized Coir Matters, Leather goods, Broom, Textile Products, Plastic Articles, Electrical Appliances and Accessories, Motors and Pumps, Processed Spices, Fruit products, Mineral Processing/Products, Mini Casting, Irrigation Equipments, so on and so forth. The Geographical and Climatic condition of the district is very "Congenial" for promotion of Electronic based industries, in particularly Software Technology Park, which is a vibrant opportunity in consideration of available Technocrats in the district. The district has opportunities for development of Industries in these potential areas.



## 4. Existing Clusters of Micro & Small Enterprise

### 4.1 DETAIL OF MAJOR CLUSTERS

There is only one cluster in Coir sector in Arasikere. But the SPV is not yet registered and as per KCTU, Formation, Submission of proposal is pending and is under progress at the Govt. of Karnataka level.

#### 4.1.1 Manufacturing Sector


No cluster development has taken up at present.

#### 4.1.2 Service Sector

No cluster development has taken up at present.

### 4.2 Details for Identified cluster

**Cluster Activities**



- ▶ The district has Industrial growth centre, Agri export zone and SEZ which would fuel accelerated growth of general and agro processing units.
- ▶ It has a direct connectivity to Mangalore port making it an emerging export destination.
- ▶ District has a vibrant Agriculture base which makes it ideal for Food Processing and Agro based industries.
- ▶ District has 400 acre Industrial Growth Center with fully developed road linkages and completely loaded infrastructure with dedicated power and water supply.

## 5. STEPS TO SET UP MSMEs

Following are the brief description of different agencies for rendering assistance to the entrepreneurs.

S.No.	Type of assistance	Name and address of agencies
1.	Registration of MSMEs	Online Registration. <a href="http://www.udyogaadhaar.gov.in">www.udyogaadhaar.gov.in</a>  <b>Director, MSME-Development Institute</b> Ministry of MSME, Govt. of India, Rajaji Nagar Industrial Estate, West of Chord Road, Bangalore. 560010 ☎ Phone : 080-23151581/82/83 ✉ e-mail: dcdi-bang@dcmsme.gov.in <a href="http://www.msmedibangalore.gov.in">www.msmedibangalore.gov.in</a>
2.	Identification of Project Profiles, Techno-economic and Managerial consultancy Services , Market survey and economic survey reports.	<b>MSME-Development Institute</b> Ministry of MSME, Govt. of India, Rajaji Nagar Industrial Estate, West of Chord Road, Bangalore. 560010 ☎ Phone : 080-23151581/82/83 ✉ e-mail: dcdi-bang@dcmsme.gov.in <a href="http://www.msmedibangalore.gov.in">www.msmedibangalore.gov.in</a>  <b>Chief Executive Officer &amp; Chief Adviser</b> <b>Technical Consultancy Services Organisation of Karnataka</b> (A Govt. of Karnataka Organisation) 4 <sup>th</sup> Floor, Basava Bhavan, Basaveshwara Circle, Bangalore 560 001. ☎ Phone : 080-22266134/2226152/41512382 ✉ e-mail: <a href="mailto:tecsok1@airtelmail.in">tecsok1@airtelmail.in</a> <a href="http://www.tecsok.com">www.tecsok.com</a>
3.	Industrial Land	<b>Chief Executive Officer &amp; Executive Member</b> <b>Karnataka Industrial Areas Development Board (KIADB)</b> 4 <sup>th</sup> & 5 <sup>th</sup> Floor, East Wing, Khanija Bhavan, Race Course Road, Bangalore. – 560001 ☎ Phone : 080-22265383/22267900 ✉ e-mail: <a href="mailto:kiadb@mail.nic.in">kiadb@mail.nic.in</a> <a href="http://www.kiadb.in">www.kiadb.in</a>
4.	Industrial Shed	<b>Chairman</b> <b>Karnataka State Small Industries Development Corporation Limited., (KSSIDC),</b> Industrial Estate, B.Kapihalli, Hassan-573201 ☎ Phone : 0817-2240636 <a href="http://www.kssidc.kar.nic.in">www.kssidc.kar.nic.in</a>
5.	Financial Assistance	<b>All Nationalized Banks</b>  <b>Karnataka State Financial Corporation (KSFC)</b> Race Course Road, Hassan - 573201 ☎ Phone : 08172-268703/265429 ✉ e-mail: <a href="mailto:hsn@ksfc.in">hsn@ksfc.in</a> <a href="http://www.ksfc.in">www.ksfc.in</a>
6.	For Raw Materials under Govt. Supply	<b>Chairman</b> <b>Karnataka State Small Industries Development Corporation Limited., (KSSIDC)</b> Industrial Estate, B.Kapihalli, Hassan-573201 ☎ Phone : 0817-2240636 <a href="http://www.kssidc.kar.nic.in">www.kssidc.kar.nic.in</a>  <b>General Manager</b> <b>National Small Industries Corporation (NSIC)</b> No. 25, First Main Road, KSSIDC Industrial Estate, 6 <sup>th</sup> Block, Rajaji Nagar, Bangalore. 560010 ☎ Phone : 080-23109059/23307791/23147858 ✉ e-mail: <a href="mailto:boban@nsic.co.in">boban@nsic.co.in</a> <a href="http://www.nsic.co.in">www.nsic.co.in</a>
7.	Plant & Machinery under hire/purchase basis	<b>General Manager</b> <b>National Small Industries Corporation (NSIC)</b> No. 25, First Main Road, KSSIDC Industrial Estate, 6 <sup>th</sup> Block, Rajaji Nagar, Bangalore. 560010 ☎ Phone : 080-23109059/23307791/23147858 ✉ e-mail: <a href="mailto:boban@nsic.co.in">boban@nsic.co.in</a> <a href="http://www.nsic.co.in">www.nsic.co.in</a>
8.	Power / Electricity	<b>CESC,Mysore</b>
9.	Technical Know-How	<b>Managing Director</b> <b>Karnataka Council for Technological Upgradation (KCTU)</b>

		4th Floor, Basava Bhavan, Basaveswara Circle, Bangalore - 560001 ☎ Phone : 080-22250722 ☒ e-mail: <a href="mailto:md-kctu-ka@nic.in">md-kctu-ka@nic.in</a> ☒ e-mail: <a href="mailto:info-kctu-ka@nic.in">info-kctu-ka@nic.in</a> <a href="http://www.kctu.kar.nic.in">www.kctu.kar.nic.in</a>
10.	Quality & Standard	<b>Scientist 'F' &amp; Head</b> <b>Bureau of Indian Standards (BIS)</b> Peenya Industrial Estate, 1 <sup>st</sup> Stage, Tumkur Road, Bangalore-560058 ☎ Phone : 080-28394955/283949656 ☒ e-mail: <a href="mailto:bnbo@bis.gov.in">bnbo@bis.gov.in</a> <a href="http://www.bis.org.in">www.bis.org.in</a>
11.	Marketing & Export Assistance	<b>Visvesvaraya Trade Promotion Centre (VTPC)</b> III Floor, 'A' Block, BMTC Complex, Shantinagar, Double Road, Bangalore -560027. ☎ Phone 080-22230853 / 22210633 / 22534444 ☒ e-mail: <a href="mailto:md@vtpckarnataka.gov.in">md@vtpckarnataka.gov.in</a> <a href="http://www.vtpckarnataka.gov.in">www.vtpckarnataka.gov.in</a>  <b>Engineering Export Promotion Council (EEPC)</b> <b>Sub-Regional Office, 2<sup>nd</sup> Floor, Vinayaka Complex,</b> 44/45 Residency Road Cross, Bangalore- 560025 ☎ Phone : 080-25581396/25588619 ☒ e-mail: <a href="mailto:eeecsroblr@eepcindia.net">eeecsroblr@eepcindia.net</a> <a href="http://www.eepcindia.com">www.eepcindia.com</a>  <b>EXIM Bank India</b> Ramanashree Arcade, Floor 4, 18 M G Road, Bangalore. ☎ Phone : 080-25585755 ☒ e-mail: <a href="mailto:eximbro@eximbankindia.in">eximbro@eximbankindia.in</a> <a href="http://www.eximbankindia.in">www.eximbankindia.in</a>
12.	Other Promotional Agencies	<b>Managing Director</b> <b>Karnataka Udyog Mitra</b> 3rd Floor, Khaniya Bhavan (East Wing), No.49, Race Course Road, Bangalore – 560 001 ☎ Phone : 080-22282392/2228 5659/2238 1232/2228 6632 ☒ e-mail: <a href="mailto:md@kumbangalore.com">md@kumbangalore.com</a> <a href="http://www.kum.karnataka.gov.in">www.kum.karnataka.gov.in</a>

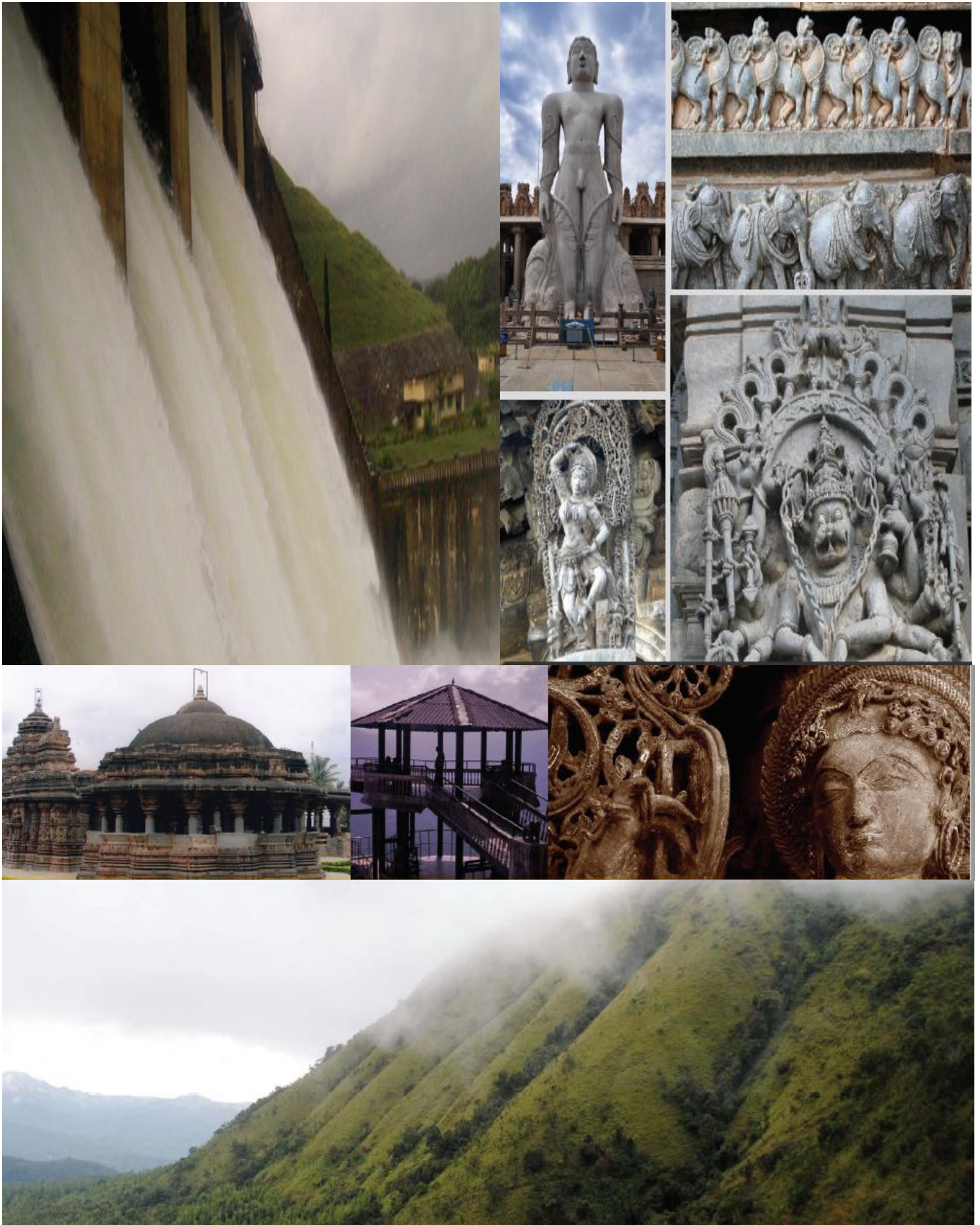
## 6. Any other important additional information of the district

### TOURISM

- **Shravana Belagola** – The statue of Gommateshvara Bahubali at Śravana Belgola is one of the most important pilgrimage destinations in Jainism.
- **Hassanamba Temple** – It is a 800 year old temple dedicated to goddess Shakti or Amba The main diety of the temple is that of Hassan.
- **Channakeshava Temple** - World famous for the finest examples of Hoysala workmanship; Situated onthe banks of river Yagachi, 38 km from Hassan.
- **Halebeed temple** - Grand example of temple architecture with sequences from the greatest Hindu epics (Ramayana, Mahabharatha and Bhagavatha) depicted on the outer walls of the temples.
- **Ramanathapura** - Situated on the left bank of the cauvery and a noted centre of pilgrimage and hasbeen called 'Dakshina Kashi'.

- **Bisle Ghat** - Situated about 65 Kms from Sakaleshpur on Sakaleshpur-Subramanya road. The place has mountainous region and full of panoramic sceneries, making it a desired place for trekkers.
- **Gorur** - Situated about 25 Kms from Hassan in Hassan-Arakalgud road. Famous for temples like Trikuteshwara, Vasudeva and Kailaseshwara. The dam constructed across Hemavathi river is a major excursion spot.







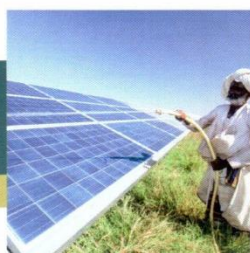
# MSME SCHEMES

## MSME OPERATES A NUMBER OF PROMOTIONAL SCHEMES FOR THE MSE SECTOR:

- ★ Credit Linked Capital Subsidy Scheme for Technology Upgradation (CLCSS)
- ★ Credit Guarantee Fund Trust for Micro and Small Enterprises (CGTMSE)
- ★ ISO 9001/ISO 14001 HACCP Certification Reimbursement Scheme.
- ★ Cluster Development Programme for identified Cluster of MSE's
- ★ Market Development Assistance International Trade Fairs (For Individual MSEs)
- ★ National Awards for outstanding MSME Entrepreneurs, R&D efforts in MSME Sector
- ★ Quality products in MSE sector and Innovation effort (For Individual MSMEs)
- ★ TREAD Scheme for Women (Individual Regd. Association & NGOs)
- ★ Capacity Building/ Seminar for Industrial Associations
- ★ Public Procurement Policy - MSEs 2012

## NATIONAL MANUFACTURING COMPETITIVENESS PROGRAMME (NMCP) SCHEMES FOR MSMEs UNDER PPP MODEL:

- ★ Marketing Support / Assistance to MSMEs (BAR Code)
- ★ Support for Entrepreneurial and Managerial Development of MSMEs through Incubators
- ★ Enabling Manufacturing Sector to be Competitive through Quality Management Standards & quality Technology Tools (QMS/QTT)
- ★ Building Awareness on Intellectual Property Rights for MSMEs (IPR)
- ★ Lean Manufacturing Competitiveness Scheme for MSMEs (LMCs)
- ★ Design Clinic Scheme for design expertise to MSMEs Manufacturing sector (DESIGN)
- ★ Marketing Assistance and Technology Upgradation Scheme for MSMEs (MATU)
- ★ Technology and Quality Upgradation support to MSMEs (TEQUP)
- ★ Promotion of Information & Communication Technology in Indian MSME Sector (ICT)



सत्यमेव जयते

Government of India

Ministry of Micro, Small & Medium Enterprises

**MSME DEVELOPMENT INSTITUTE**

Rajajinagar Industrial Estate, Bengaluru - 560 010, Karnataka, India

T: 080 23151581-82-83 | F: 080 23144506

E: dcdi-bang@dcmsme.gov.in | W: www.dcmsme.gov.in

**For more details visit our website:**

[www.msmedibangalore.gov.in](http://www.msmedibangalore.gov.in)