



**Government of India
Ministry of MSME**

DISTRICT INDUSTRIAL PROFILE



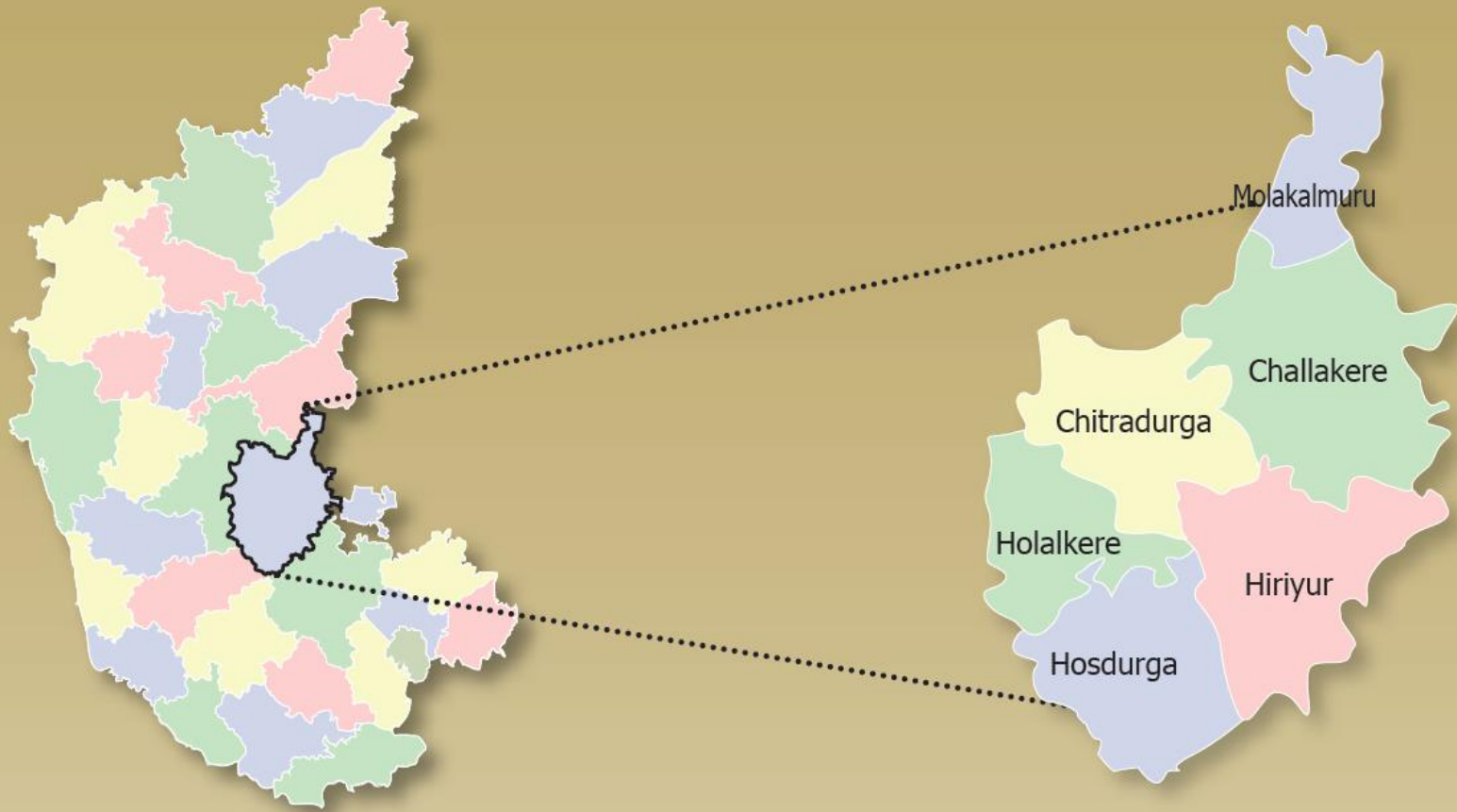
CHITRADURGA

...the heaven of stones & fortress

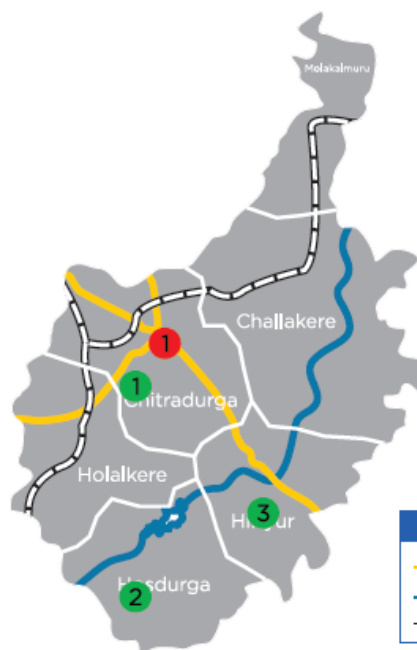
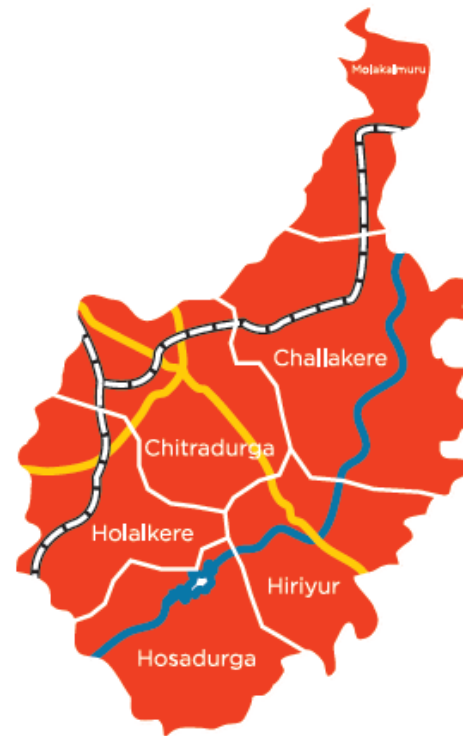
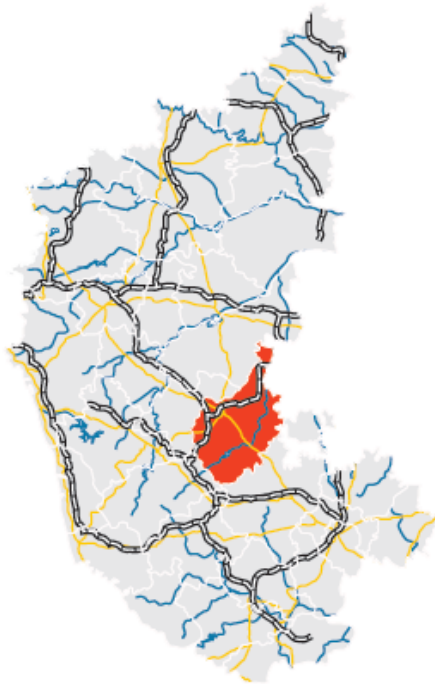


MSME-Development Institute
(Ministry of MSME, Govt. of India)
Rajaji Nagar Industrial Area, Bengaluru. - 560010
Ph: 91 080 23151581, 82, 83
Fax: 91 080 23144506
e-Mail: dc-di-bang@dcmsme.gov.in
www.msmedibangalore.gov.in

CHITRADURGA DISTRICT AND ITS TALUKS



Chitradurga District



● Industrial Area ● Industrial Estate

FOREWORD

The Micro, Small and, Medium Enterprises, Development Institute (earlier called SISI), under Ministry of MSME, Govt. of India, Bangalore is one of the prime organizations in Karnataka, engaged in the promotion and development of Industries in the Micro, Small and Medium Enterprises. As a part of the promotional and developmental activities, the Institute conducts studies on the Status and performance of Micro, Small and Medium Enterprises in the State. The District profile is one such report compiled and updated under District Industry Development Plan of the Institute assigned by Office of the Development Commissioner (SSI), New Delhi. This report contains the present status of economy, geographical information, statistical data relating to MSME's in each district, salient features of the progress of the different sectors of the each district of Karnataka and performance of industries particularly in Micro, Small and Medium industries.

I am happy to appreciate the efforts put in by all the officers and staff in this institute especially Shri. Rajkumar, IES, Deputy Director (EI), Smt. Neethu. K. Thomas, ISS, Assistant Director, Shri. D.Nataraja, Assistant Director (Stat), Shri.K.M.Balajee, Assistant Director (EI), Shri. Rajendran.B, Assistant Director (Hosiery), Shri. A. Shivakumar, Assistant Director (Mech), Smt. Sruthi G K, Assistant Director (EI), Shri. R. Anbu Kumaran, Assistant Director (IMT) in collecting the latest information available from different departments of Government of Karnataka and in bringing out this Industrial Profile report. I would also like to thank all Joint Directors of District Industry Centres, Senior Officers of Statistics Division of Govt. of Karnataka, Director of Industries and Commerce, for their valuable inputs during the preparation of this document. I sincerely hope that this report will be useful to all concerned with the development of Industries. It is needless to state that this document will serve as a valuable guide to the prospective entrepreneurs who are desirous of setting up of industries/enterprises in the state.

BANGALORE
15.06.2016

(S.N.RANGA PRASAD)
Director

Table of Contents

S. No.	Topic	Page No.
1.	Introduction & General Characteristics of the District	6
1.1	Location & Geographical Area	6
1.2	Topography	6
1.3	Availability of Minerals.	6
1.4	Forest	6
1.5	Administrative set up	6
1.6	Infrastructure	7
2.	District at a glance	8-9
2.1.1	Existing Status of Industrial Areas in the District	10
2.1.2	Existing Status of Industrial Estates in the District	10
3.	Industrial Scenario Of the district	10
3.1	Industry at a Glance	10
3.2	Year Wise Trend Of Units Registered	11
3.3	Details Of Existing Micro & Small Enterprises & Artisan Units In The District	11-12
3.4	Large Scale Industries / Public Sector undertakings	12-13
3.5	Major Exportable Item	13
3.6	Growth Trend	13
3.7	Vendorisation / Ancillarisation of the Industry	13
3.8	Major Exportable Item	13
3.9.1	Service Enterprises	13
3.9.2	Potentials areas for service industry	13
3.10	Potential for new MSMEs	13-14
4.	Existing Clusters of Micro & Small Enterprise	15
4.1	Detail Of Major Clusters	15
4.1.1	Manufacturing Sector	15
4.1.2	Service Sector	15
5	Steps to set up MSMEs	16
6.	Additional information if any	17-19

Industrial Profile of Chitradurga District

1. Introduction & General Characteristics of the district: CHITRADURGA Located at a distance of 202 kms Northwest of Bangalore, in the heart of the Deccan Plateau, Chitradurga is recognized as the land of valour and chivalry. The district headquarters town, Chitradurga owes its name to "Chitrakaladurga," or "Picturesque castle". This is a massive fortress on top of granite hills that rises dramatically from the ground. Archaeological remains found in the area, trace its history to the 3rd millennium B.C. The famous King **Tipu Sultan**, was responsible for its expansion and strengthening **Royal Mysore family**.

1.1 Location & Geographical Area.: Chitradurga is located at a Rich in mineral resources - distance of 202 kms, northwest of Bangalore. And has Geographical area of 770702 hectares. And has a literacy rate 64.5% (according to 2001 Census).

1.2 Topography: Geographic Location 13°34' to 15° 02' North latitude 75° 37' to 77° 01' East longitude and having Temperature 37°C (Max) 15°C (Min). Normal Average Rainfall is 744 mm, Main River is Tungabhadra and Total Geographical Area is spread over 3969 sqkm

1.3 Availability of Minerals.

PRODUCTION OF MINERAL

S.NO.	NAME OF MINERAL	PRODUCTION in tonnes 2010-2011
MAJOR MINERAL		
1.	IRON ORE	5941029
2.	MANGANESE	3112
MINOR MINERAL		
1.	LIME STONE and Dolomite	189000
2.	Gray Granite	928
3	Building Stone	235394

SOURCE:- DEPT. OF MINES & GEOLOGY.,

1.4 FOREST: Has an area of 73719 hectares under forest cover with minor forest products.

1.5 Administrative set up. The district is divided into Six taluks, namely Chitradurga, Hiriya, Hosadurga, Holalkere, Challakere and Molakalmuru. The district is bounded by Tumkur District to the southeast and south, Chikmagalur District to the southwest, Davanagere District to the west, Bellary District to the north, and Anantapur District of Andhra Pradesh state to the east. Davanagere District was formerly part of Chitradurga. It is rich in mineral deposits, including gold prospecting at Halekal, Kotemardi or Bedimaradi, etc., and open cast copper mines at Ingaldhal. It has two sub divisions.

1.6 Infrastructure and Resources Available

Power

- Transmission and distribution in the District is being done by Bangalore Electricity supply Company Limited (BESCOM).
- The District receives the power from Sharavati Hydel Generating Station.
- One receiving the Station in Hiriur with capacity of 220 MVA..
- The District has 91 Wind Mills in Chitradurga and Hiriur generating 21.74 MW Power.
- Welsuun Energy Limited (WEL) has commissioned its first solar project in chitradurga of 8.02 MW(DC) capacity.
- Average Annual Consumption – 464.27 Lakh Units.
- Domestic -1060.75 Lakh units.

Water

- ✓ Vedavathi, a tributary of Tungabhadara flows through the district.
- ✓ Apart from the existing rivers and rainfall, reservoirs and tanks are extensively used for water storage.
- ✓ Average demand in the district (In dustry and Domestic) -9,31,950 litres / day
- ✓ Average consumption in the district -7,92,157 litres/day.

Industry Resources

- 13 Large and Medium Scl e Industries with aggregated investment in INR 398 Crore.
- 9,345 Small-Scale Industries with aggregated investment in INR 181 Crore
1 Industrial Area and 3 Industrial Estates
- Planned eight-lane road from Bidar-Bangalore via chitradurga-Mangalore ; and Chitradurga-Hospet-Bagalkot –Bijapur.
- Proposed Air strip, Industrial Area, Industrial Estate , Cement Zone , and a Power generation Zone Covering the district.
- Proposed 1810 Acre Park for Defence Industries in the District.
- Artisan Clusters- Textile Handlooms , Textile Hand Printed.
- Chitradurga Comes under Zone-3 as per the State Industrial Policy,
- Indian Institute of Science is coming up aith its second campus in chitradurga spread over 2,000 acres of land.

2. District at a glance

S.No	Particular	Year	Unit	Statistics
1	Geographical features			
(A)	Geographical Data			
	i) Latitude			13° 34' to 15° 02' North latitude
	ii) Longitude			75° 37' to 77° 01' East longitude
	iii) Geographical Area		Hectares	770702
(B)	Administrative Units			
	i) Sub divisions			2
	ii) Tehsils			6
	iii) Sub-Tehsil			11
	iv) Patwar Circle			311
	v) Panchayat Simitis			-
	vi) Nagar nigam			-
	vii) Nagar Palika			6
	viii) Gram Panchayats			185
	xi) Revenue villages			1059
	x) Assembly Area			6
2.	Population (As per Census 2011)			
(A)				
	i) Male	2011	Nos	8,43,411
	ii) Female	2011	Nos	8,16,967
(B)	Rural Population	2011		13,32,012
3.	Agriculture			
A.	Land utilization			
	i) Total Area		Hectare	770702
	ii) Forest cover		"	73719
	iii) Non Agriculture Land		"	51243
	v) cultivable Barren land		"	25403
4.	Forest			
	(i) Forest		Ha.	73719
5.	Livestock & Poultry			
A.	Cattle			
	i) Cows		Nos.	341011
	ii) Buffaloes		Nos.	193260
B.	Other livestock			
	i) Goats		Nos.	368730
	ii) Pigs		Nos.	4663
	iii) Dogs & Bitches		Nos.	18276
	iv) Railways			
	i) Length of rail line		Kms	171.00
	V) Roads			
	(a) National Highway		Kms	167.00

(b) State Highway		Kms	613.24
(c) Main District Highway		Kms	2109.37
(d) Other district & Rural Roads		Kms	1905.52
(e) Rural road/ Agriculture Marketing Board Roads		Kms	Incl. in item (d)
(f) Kachacha Road		Kms	4811.56
(VI) Communication			
(a) Telephone connection			25983
(b) Post offices		Nos.	320
(c) Telephone center		Nos.	82
(d)Density of Telephone		Nos./1000 person	-
(e) Density of Telephone		No. per KM.	-
(f) PCO Rural		No.	-
(g) PCO STD		No.	-
(h) Mobile		No.	253763
(VII) Public Health			
(a) Allopathic Hospital		No.	16
(b) Beds in Allopathic hospitals		No.	1250
(c) Ayurvedic Hospital		No.	3
(d) Beds in Ayurvedic hospitals		No.	22
(e) Unani hospitals		No.	-
(f) Community health centers		No.	10
(g) Primary health centers		No.	89
(h) Dispensaries			22
(i) Sub Health Centers		No.	33
(j) Private hospitals		No.	283
(VIII) Banking commercial			
(a) Commercial Bank		Nos.	33
(b) rural Bank Products		Nos.	65
(c) Co-Operative bank products		Nos.	1
(d) PLDB Branches		Nos.	6
(IX) Education			
(a) Primary school		Nos.	902
(b) Middle schools		Nos.	1109
(c) Secondary & senior secondary schools		Nos.	398
(d) Colleges		Nos.	134
(e) Technical University		Nos.	11
Source : Directorate of Economics and Statistics, Bangalore			

2.1.1 Existing Status of Industrial areas in the District

Sl. No.	Name of land area	Land acquired (In hectare)	Land developed (in hectare)	Prevailing Rate Per Sqm (In Rs.)	No. of Plots	No of allotted Plots	No. Of Vacant	No of Units in Production
1	Kelagote Industrial Area, Chitradurga	87.23	87.23	350	88	88	Nil	71

Source : KIADB

2.1.2 Existing Status of Industrial Estates in the District

Sl. No.	Name of land estate	Land acquired In acres)	Land developed (in acres)	Prevailing Rate Per Sqm (In Rs.)	No. of Formed		No of allotted		No. Of Vacant		No of Units in Production
					Plots	sheds	Plots	sheds	Plots	Sheds	
1	Chitradurga P.B. Road,	10.00	10.00	3080	18	36	18	35	-	01	52
2	M.K. Hatty, P.B. Road,	8.00	8.00	2000	26	-	-	-	26	-	-
3	Hosadurga	9.36	9.36	370	59	16	56	15	03	01	67
4	Hiriyuru	13.14	13.14	420	69	8	66	08	03	-	71
5	Challakere, K I A D B	5.00	5.00	The plots/sheds to be allotted							
6	Challakere	50.00	50.00	The plots/sheds to be allotted							
7	Challakere	250.00	250.00	The plots/sheds to be allotted							

Source : KSSIDC/DIC

3. INDUSTRIAL SCENERIO

3.1. Industry at a Glance

Sl. No	Head	Unit	Particulars
1	REGISTERED MSMEs	Nos	11500
2	LARGE INDUSTRIAL UNITS	Nos	7
3	TOTAL EMPLOYED IN MSMES	Nos	70797
4	NO. OF INDUSTRIAL AREA	Nos	01
5	NO. OF INDUSTRIAL ESTATE	Nos	7
6	NO. OF INDUSTRIAL PARK	Nos	-
7	Total investments in MSMES	In lakhs	30861

Total no of units, investments& employment in MSMEs are from 2005 to 2016

3.2 YEAR WISE TREND OF UNITS REGISTERED

YEAR	NUMBER OF REGISTERED UNITS	EMPLOYMENT	INVESTMENT (LAKH RS.)
2005-06	480	1382	569
2006-07	370	1367	808
2007-08	376	1398	803
2008-09	459	1337	639
2009-10	507	2136	1430
2010-11	536	2467	1668
2011-12	482	2321	1890
2012-13	485	2338	2049
2013-14	483	2050	3513
2014-15	551	2316	1898
2015-16	1011	7199	15594

Source DIC Chitradurga

3.3. DETAILS OF EXISTING MICRO & SMALL ENTERPRISES AND ARTISAN UNITS IN THE DISTRICT.

NIC CODE	TYPE OF INDUSTRY	NUMBER OF UNITS	INVESTMENT (LAKH RS.)	EMPLOYMENT
20	Agro based	250	500.00	1250
22	Soda water	35	70.00	175
23	Cotton textile	20	310.00	109
24	Woolen, silk & artificial thread based clothes	600	1200.00	2890
25	Jute & Jute based	20	110.00	90
26	Ready-made garments & embroidery	2200	4400.00	9650
27	Wood/Wooden based furniture	30	6000.00	12600
28	Paper & Paper products	150	350.00	800
29	Leather based	700	1350.00	3000

31	Chemical/Chemical based	30	65.00	156
30	Rubber, Plastic	40	85.00	200
32	Mineral based	18	36.00	66
33	Metal based (steel Fab)	120	1248.00	500
35	Engineering units	721	1441.00	2800
36	Electrical machinery and transport equipment	450	850.00	2260
97	Reparing & servicing	800	1600.00	3900
01	others	1841	7855.00	9180

(As on 31.03.2016)

3.4 MEGA(LARGE & MEDIUM SCALE INDUSTRIES IN CHITRADURGA DISTRICT)						
SL. NO	NAME AND ADDRESS OF COMPANY	END PRODUCTS	INVESTMENTS (Rs.CRORES)	EMPLOYMENT	Status	Starting year
1	Madras Cement Pvt. Ltd., Matthod, Hosadurga Tq., Chitradurga Dist.	Cement	100.21	74	working	1972
2	R.K. Powergen Pvt. Ltd. Challakee Road, Hiriya Tq. Chitradurga Dist.	Power Generation	10.50	70	working	2005
3	V.S.L. Steel Ltd., Paramanahally, Hiriya Tq., Chitradurga Dist.	Pig Iron	11.00	251	working	2000
4	Sunray Industries Voderahalli, Rampura, Molakalmjuru Tq. Chitradurga Dist.	Sponge Iron	10.60	47	working	2011
5	Prakash sponge Iron & Power Pvt. Ltd., Heggere, Challakere Tq. Chitradurga Dist.	Sponge Iron	10.80	48	working	2011

6	Habib protence & Fats, Metikurke, Hriyur Tq. Chitradurga Dist.	solvent Oil	12.00	44	working	1991
7	Amruth Organicks, Malladihalli, Holalekere TQ. Chitradurga Dist.	Organic Fertilizers	15.00	46	working	2011

3.5 Major Exportable item

Tamarind seeds (white)) and Ground Nut Decorticating items.

3.6 Growth Trend

Power generation is has a potential growth in the district, Cement production has increasing trend due to availability of lime stone. Wind mill energy is under progress from Govt. of Karnataka.

3.7 Vendorisation/Ancillarisation of the industry.

Ancillaries in Engg. /Garments is possible to cater the needs of existing big units.

3.8 Major Exportable item

Tamarind seeds (white paps) & G.N. Decorticating itmes

3.9.1 Service Enterprises

Vehicle water service, automobile repairs valacnising works, etc.,

3.9.2 Potentials areas for service industry

Chitradurga , Challakere, Hiriya, Hosadurga.

3.10 Potential for new MSME.

Automobile parts, Food processing units, Coir units , Saree units has potential in Chitradurga , Challakere, Hiriya taluks of the district.

Potential Industries.

Energy

- 4th Largest Producer of Wind Energy with capacity of 1472.75 MW.
- District has one of the high wind sites in the country with over 20,000 wind turbines.
- Best performance in the country by district wind farms recording a capacity factor of 38.5%
- Proposed 21MW EKWL wind Farm

Textiles and Handloom Industries

- Textile Constitutes Second High number of large & Medium Industries in the district and around 12% of SSI units in the district
- Among the highest investment attracting sectors
- 3 artisan clusters in Textile Handloom and Printing.

Food Processing

- A large number of SSI units are engaged in Food Processing sector creating an eco system and supply of skilled labour.
- More than 20% of the SSI uniys in the district are engaged in Agro and Food processing activities.

Mining

- Rich in resources like iron & Manganese ore, Copper and Green Quartz.
- Limestone reserves estimated to the tune of 93.05 million tones.
- Prominent gold mines at Halekal, Kotemardi and Bedimaradi, open cast copper mines at Ingaldhal.

Cement

- District has large proven limestone reserves
- Presence of Large & medium Industries in cement Sector
- Emerging contendet for cement and steel

Others

- Industries include 1 gold mine, 3 textile industries, 7 edible oil industries, 1 power industry and 1 cement industry.

4. Existing clusters of Micro & Small Enterprises.

Hiriyur-Coir, Hosadurga-Coir, Molakalmur-Silk sarees and & Garments.

4.1 DETAIL OF MAJOR CULSTERS

4.1.1 Manufacturing Sector

- a. Wool cluster, Challakere, Chitradurga District :- DSR has been prepared and forwarded to DC MSME for the approval.
- b. Wool cluster, Hosadurga, Chitradurga District :- DSR has been prepared and yet to send to DC MSME.
- c. Puffed rice cluster, Holalkere Road, Chitradurga District:- DPR has been submitted to DC MSME and in principle approved, and validation report is been prepared by SIDBI.

Name of the Cluster: Global Puffed Rice Cluster

1	Principal Products Manufactured in the Cluster	Puffed Rice
2	Name of the SPV	Global Puffed Rice Society
3	No. of functional units in the clusters	68 Units
4	Turnover of the Clusters	Rs. 9.3 Cr
5	Value of Exports from the Clusters	NA
6	Employment in Cluster	408(direct) and 300(indirect)
7	Average investment in plant & Machinery	Rs. 30,000 to Rs. 5 lakh
8	Major Issues / requirement	Infrastructure, Technology, Lack of Testing centres
9	Presence of capable institutions	--
10	Thrust Areas	Puffed Rice
11	Problems & constraints	New Cluster – skilled labour. Lack of Quality

4.1.2 Service Sector.

Vehicle Service, Auto mobile centre.

5. STEPS TO SET UP MSMEs

Following are the brief description of different agencies for rendering assistance to the entrepreneurs.

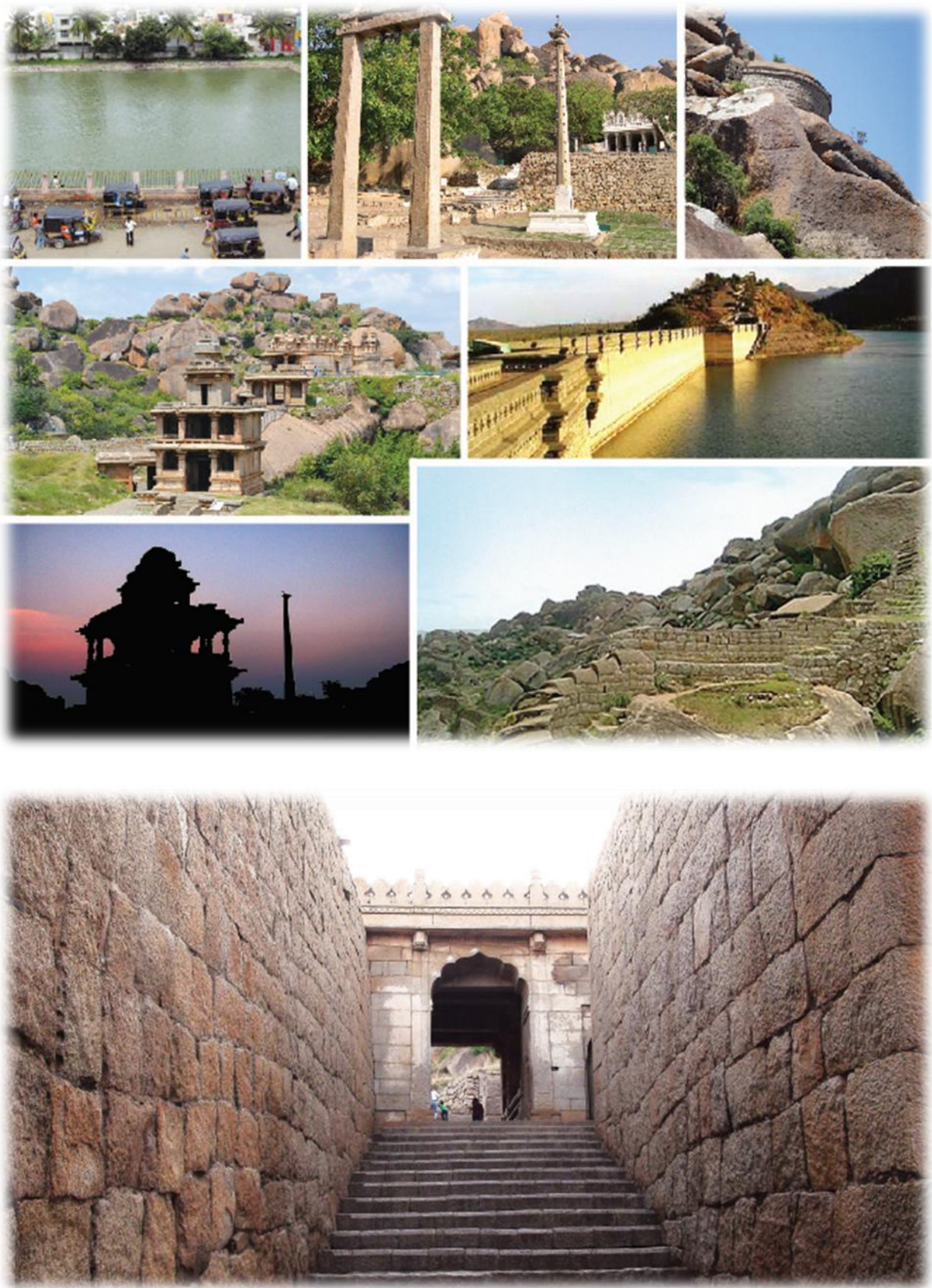
S.No.	Type of assistance	Name and address of agencies
1.	Registration of MSMEs	Online Registration. www.udyogaadhaar.gov.in Director, MSME-Development Institute Ministry of MSME, Govt. of India, Rajaji Nagar Industrial Estate, West of Chord Road, Bangalore. 560010 ☎ Phone : 080-23151581/82/83 ✉ e-mail: dcdi-bang@dcmsme.gov.in www.msmedibangalore.gov.in
2.	Identification of Project Profiles, Techno-economic and Managerial consultancy Services , Market survey and economic survey reports.	MSME-Development Institute Ministry of MSME, Govt. of India, Rajaji Nagar Industrial Estate, West of Chord Road, Bangalore. 560010 ☎ Phone : 080-23151581/82/83 ✉ e-mail: dcdi-bang@dcmsme.gov.in www.msmedibangalore.gov.in Chief Executive Officer & Chief Adviser Technical Consultancy Services Organisation of Karnataka (A Govt. of Karnataka Organisation) 4 th Floor, Basava Bhavan, Basaveshwara Circle, Bangalore 560 001. ☎ Phone : 080-22266134/2226152/41512382 ✉ e-mail: tecsok1@airtelmail.in www.tecsok.com
3.	Industrial Land	Chief Executive Officer & Executive Member Karnataka Industrial Areas Development Board (KIADB) 4 th & 5 th Floor, East Wing, Khanija Bhavan, Race Course Road, Bangalore. – 560001 ☎ Phone : 080-22265383/22267900 ✉ e-mail: kiadb@mail.nic.in www.kiadb.in
4.	Industrial Shed	Chairman Karnataka State Small Industries Development Corporation Limited., (KSSIDC), Rajaji Nagar Industrial Estate, West of Chord Road, Bangalore. 560010 ☎ Phone : 080-23407011 www.kssidc.kar.nic.in
5.	Financial Assistance	All Nationalized Banks Karnataka State Financial Corporation (KSFC) Behind Basaveshwara Theatre, Near IB, Chitradurga – 577501 ☎ Phone : 08194-224410/224411 ✉ e-mail: ctd@ksfc.in www.ksfc.in
6.	For Raw Materials under Govt. Supply	Chairman Karnataka State Small Industries Development Corporation Limited., (KSSIDC) Rajaji Nagar Industrial Estate, West of Chord Road, Bangalore. 560010 ☎ Phone : 080-23407011 www.kssidc.kar.nic.in General Manager National Small Industries Corporation (NSIC) No. 25, First Main Road, KSSIDC Industrial Estate, 6 th Block, Rajaji Nagar, Bangalore. 560010 ☎ Phone : 080-23109059/23307791/23147858 ✉ e-mail: boban@nsic.co.in www.nsic.co.in
7.	Plant & Machinery under hire/purchase basis	General Manager National Small Industries Corporation (NSIC) No. 25, First Main Road, KSSIDC Industrial Estate, 6 th Block, Rajaji Nagar, Bangalore. 560010 ☎ Phone : 080-23109059/23307791/23147858 ✉ e-mail: boban@nsic.co.in www.nsic.co.in
8.	Power / Electricity	Bangalore Electrical Supply Corporation, BESCO H.O. Bangalore
9.	Technical Know-How	Managing Director

		Karnataka Council for Technological Upgradation (KCTU) 4th Floor, Basava Bhavan, Basaveswara Circle, Bangalore - 560001 ☎ Phone : 080-22250722 ✉ e-mail: md-kctu-ka@nic.in ✉ e-mail: info-kctu-ka@nic.in www.kctu.kar.nic.in
10.	Quality & Standard	Scientist 'F' & Head Bureau of Indian Standards (BIS) Peenya Industrial Estate, 1 st Stage, Tumkur Road, Bangalore-560058 ☎ Phone : 080-28394955/283949656 ✉ e-mail: bnbo@bis.gov.in www.bis.org.in
11.	Marketing & Export Assistance	Visvesvaraya Trade Promotion Centre (VTPC) III Floor, 'A' Block, BMTC Complex, Shantinagar, Double Road, Bangalore -560027. ☎ Phone 080-22230853 / 22210633 / 22534444 ✉ e-mail: md@vtpckarnataka.gov.in www.vtpckarnataka.gov.in Engineering Export Promotion Council (EEPC) Sub-Regional Office, 2 nd Floor, Vinayaka Complex, 44/45 Residency Road Cross, Bangalore- 560025 ☎ Phone : 080-25581396/25588619 ✉ e-mail: eeecsroblr@eepecindia.net www.eepecindia.com EXIM Bank India Ramanashree Arcade, Floor 4, 18 M G Road, Bangalore. ☎ Phone : 080-25585755 ✉ e-mail: eximbro@eximbankindia.in www.eximbankindia.in
12.	Other Promotional Agencies	Managing Director Karnataka Udyog Mitra 3rd Floor, Khanija Bhavan (East Wing), No.49, Race Course Road, Bangalore – 560 001 ☎ Phone : 080-22282392/2228 5659/2238 1232/2228 6632 ✉ e-mail: md@kumbangalore.com www.kum.karnataka.gov.in

6. Any other important additional information of the district :

Tourism

- **Chitradurga Fort** is built on the North Eastern base of cluster of rocky hills and embellished with extensive fortifications, ramparts, bastions, watch towers and entrances, located at strategic points with fourteen temples.
- **Chandravalli** : Ancient archaeological site on the Chitradurga hill
- **Sirigere** : known for Veerashaiva Mutt of Taralabalu Jagadguru : located to the Northwest of Chitradurga.
- **Burhanmutt** : known as Sri. Murugarajendra Matt: built in honour of an eminent guru of the Veerashaiva and located about 3 km from Chitradurga.
- **Thamatekallu** : Oldest hero stone in Karnataka and located 8 Km from Chitradurga.
- **Jogimatti Hill Station** : It is named after yogi. The Himavatkedra waterfall that flows through the rocks has created a natural cave that has a Shiva Linga and idols of Veerabhadra and Basavanna.
- **Vani Vilas Sagar** is an artificial lake, also called Marie Kanive built by Maharaja of Mysuru, built across River Vadavathi : it has two pavilion halls built in the Saracenic style and is considered an engineering marvel.



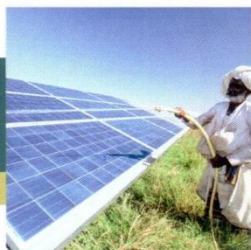
MSME SCHEMES

MSME OPERATES A NUMBER OF PROMOTIONAL SCHEMES FOR THE MSE SECTOR:

- ★ Credit Linked Capital Subsidy Scheme for Technology Upgradation (CLCSS)
- ★ Credit Guarantee Fund Trust for Micro and Small Enterprises (CGTMSE)
- ★ ISO 9001/ISO 14001 HACCP Certification Reimbursement Scheme.
- ★ Cluster Development Programme for identified Cluster of MSE's
- ★ Market Development Assistance International Trade Fairs (For Individual MSEs)
- ★ National Awards for outstanding MSME Entrepreneurs, R&D efforts in MSME Sector
- ★ Quality products in MSE sector and Innovation effort (For Individual MSMEs)
- ★ TREAD Scheme for Women (Individual Regd. Association & NGOs)
- ★ Capacity Building/ Seminar for Industrial Associations
- ★ Public Procurement Policy - MSEs 2012

NATIONAL MANUFACTURING COMPETITIVENESS PROGRAMME (NMCP) SCHEMES FOR MSMEs UNDER PPP MODEL:

- ★ Marketing Support / Assistance to MSMEs (BAR Code)
- ★ Support for Entrepreneurial and Managerial Development of MSMEs through Incubators
- ★ Enabling Manufacturing Sector to be Competitive through Quality Management Standards & quality Technology Tools (QMS/QTT)
- ★ Building Awareness on Intellectual Property Rights for MSMEs (IPR)
- ★ Lean Manufacturing Competitiveness Scheme for MSMEs (LMCs)
- ★ Design Clinic Scheme for design expertise to MSMEs Manufacturing sector (DESIGN)
- ★ Marketing Assistance and Technology Upgradation Scheme for MSMEs (MATU)
- ★ Technology and Quality Upgradation support to MSMEs (TEQUP)
- ★ Promotion of Information & Communication Technology in Indian MSME Sector (ICT)



Government of India

Ministry of Micro, Small & Medium Enterprises

MSME DEVELOPMENT INSTITUTE

Rajajinagar Industrial Estate, Bengaluru - 560 010, Karnataka, India

T: 080 23151581-82-83 | F: 080 23144506

E: dcidi-bang@dcmsme.gov.in | W: www.dcmsme.gov.in

For more details visit our website:

www.msmedibangalore.gov.in