



**Government of India  
Ministry of MSME**

# DISTRICT INDUSTRIAL PROFILE

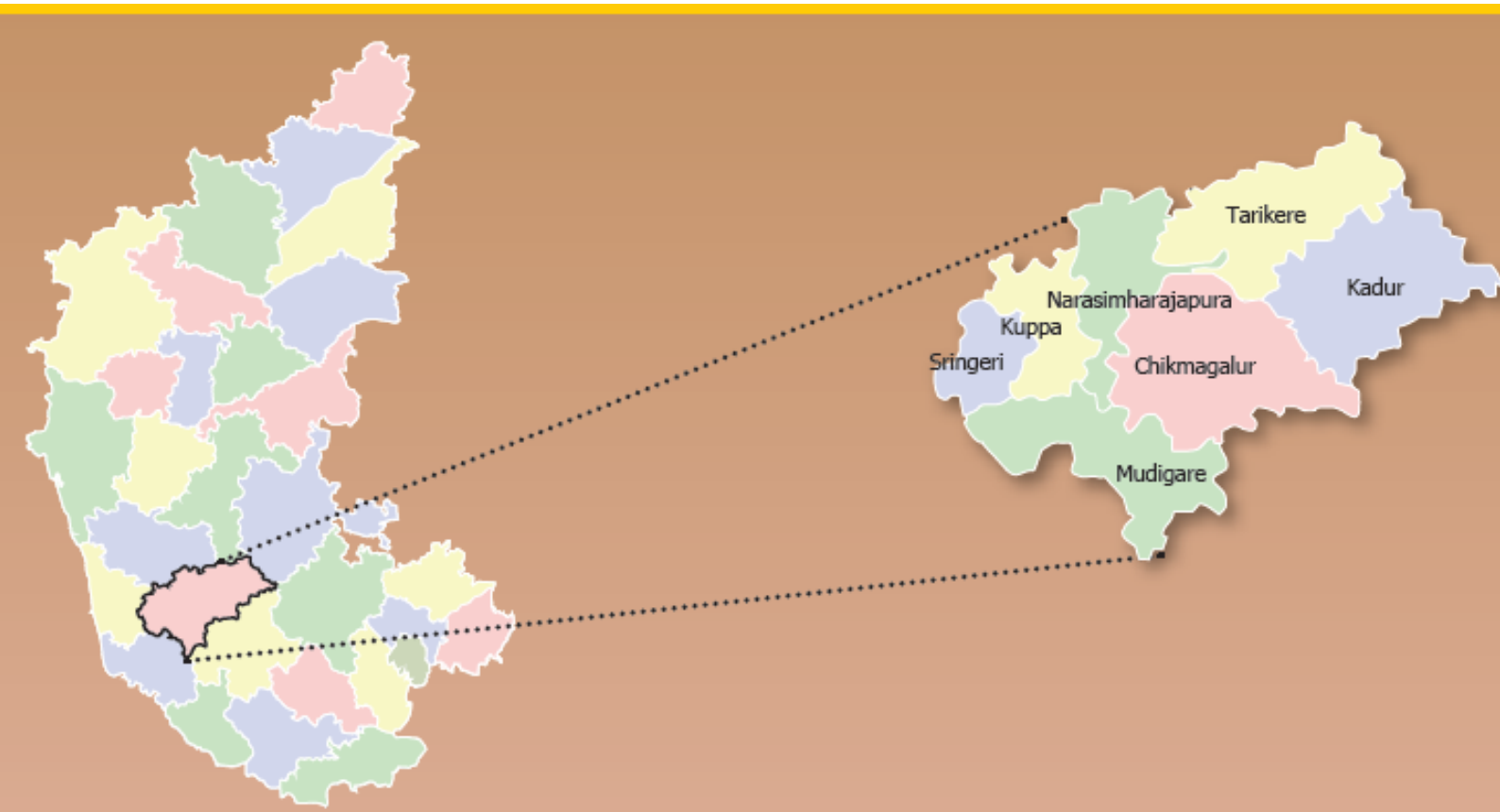


## CHICKMAGALUR



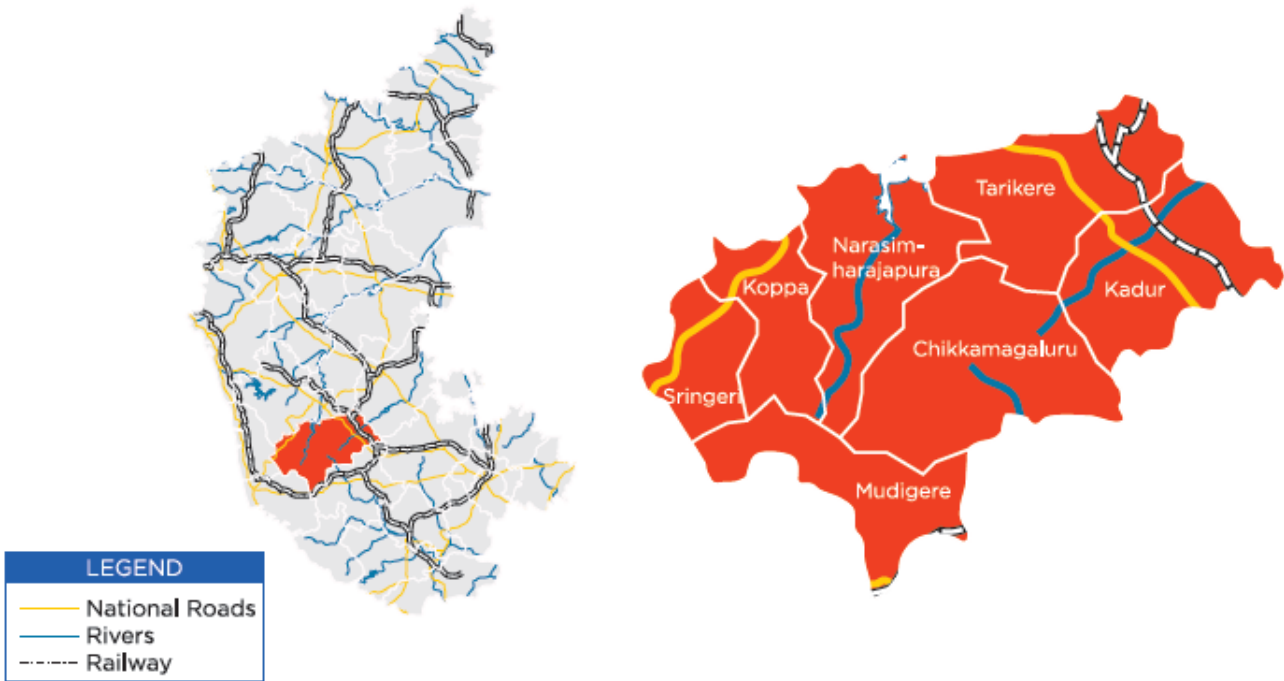
**MSME-Development Institute**  
(Ministry of MSME, Govt. of India)  
**Rajaji Nagar Industrial Area, Bengaluru. - 560010**  
Ph: 91 080 23151581, 82, 83  
Fax: 91 080 23144506  
e-Mail: [dcdi-bang@dcmsme.gov.in](mailto:dcdi-bang@dcmsme.gov.in)  
[www.msmedibangalore.gov.in](http://www.msmedibangalore.gov.in)

## CHICKMAGALUR DISTRICT & ITS TALUKS



# District Overview

## Chikkamagaluru District



## Industrial Areas/Estates

### Map of Chikkamagaluru District



## **FOREWORD**

The Micro, Small and, Medium Enterprises, Development Institute (earlier called SISI), under Ministry of MSME, Govt. of India, Bangalore is one of the prime organizations in Karnataka, engaged in the promotion and development of Industries in the Micro, Small and Medium Enterprises. As a part of the promotional and developmental activities, the Institute conducts studies on the Status and performance of Micro, Small and Medium Enterprises in the State. The District profile is one such report compiled and updated under District Industry Development Plan of the Institute assigned by Office of the Development Commissioner (SSI), New Delhi. This report contains the present status of economy, geographical information, statistical data relating to MSME's in each district, salient features of the progress of the different sectors of the each district of Karnataka and performance of industries particularly in Micro, Small and Medium industries.

I am happy to appreciate the efforts put in by all the officers and staff in this institute especially Shri. Rajkumar, IES, Deputy Director (EI), Smt. Neethu. K. Thomas, ISS, Assistant Director, Shri. D.Nataraja, Assistant Director (Stat), Shri.K.M.Balajee, Assistant Director (EI), Shri. Rajendran.B, Assistant Director (Hosiery), Shri. A. Shivakumar, Assistant Director (Mech), Smt. Sruthi G K, Assistant Director (EI), Shri. R. Anbu Kumaran, Assistant Director (IMT) in collecting the latest information available from different departments of Government of Karnataka and in bringing out this Industrial Profile report. I would also like to thank all Joint Directors of District Industry Centres, Senior Officers of Statistics Division of Govt. of Karnataka, Director of Industries and Commerce, for their valuable inputs during the preparation of this document. I sincerely hope that this report will be useful to all concerned with the development of Industries. It is needless to state that this document will serve as a valuable guide to the prospective entrepreneurs who are desirous of setting up of industries/enterprises in the state.

**BANGALORE**  
**15.06.2016**

**(S.N.RANGA PRASAD)**  
**Director**

## Table of Contents

<b>S. No.</b>	<b>Topic</b>	<b>Page No.</b>
1.	Introduction and General Characteristics of the District	6
1.1	Location & Geographical Area	6
1.2	Topography	6
1.3	Availability of Minerals.	6
1.4	Forest	7
1.5	Administrative set up	7
1.6	Infrastructure	7
2.	District at a glance	8-9
2.1.1	Existing Status of Industrial Area in the District	10
2.1.2	Existing Status of Industrial Estate in the District	10
3.	Industrial Scenario Of the district	10
3.1	Industry at a Glance	10
3.2	Year Wise Trend Of Units Registered	11
3.3	Details Of Existing Micro & Small Enterprises & Artisan Units In The District	12
3.4	Large Scale Industries / Public Sector undertakings	12
3.5	Major Exportable Item	12
3.6	Growth Trend	12
3.7	Vendorisation / Ancillarisation of the Industry	13
3.8	Major Exportable Item	13
3.9.1	Service Enterprises	13
3.9.2	Potentials areas for service industry	13
3.10	Potential for new MSMEs	13
4.	Existing Clusters of Micro & Small Enterprise	13
4.1	Detail Of Major Clusters	13
4.1.1	Manufacturing Sector	13
4.1.2	Service Sector	13
4.2	Details of Identified cluster	14
4.2.1	Jackfruit value added products Cluster	14
4.2.2	Auto cluster	14
4.2.3	Wooden Furniture cluster	14
5	Steps to set up MSMEs	15-16
6.	Additional information if any	16-18

## **Industrial Profile of Chickmagalur District**

### **1. Introduction & General Characteristics of the District:**

- Situated in the south-western part of the State Consists of 7 taluks –Chickmagalur, Kadur Koppa, Mudigere, N.R Pura, Sringeri and Tarikere.
- It is famous for its Coffee cultivation and is known as the coffee land of Karnataka.
- Contains Mullayanagiri, which is the highest peak in Karnataka
- Kundremukh: 95 km southwest of Chikmagalur town is Kudremukh range, so named because of the unique shape of the Kudremukh peak. Situated at 1,894.3 meters above sea level Kudremukh is rich in iron ore deposits. The Kudremukh Iron Ore Company conducts mini operations, benefaction and transportation of the ore as slurry through pipelines to the port at Panambur near Mangalore.

#### **1.1 Location & Geographical Area.:**

Situated in the south-western part of the State. Consists of 7 taluks –Chickmagalur, Kadur, Koppa, Mudigere, N.R Pura, Sringeri and Tarikere It is famous for its Coffee cultivation and is known as the coffee land of Karnataka . This district has a geographical area of 722075 hectares.

#### **1.2 Topography:**

Temperature	31°C (Max) 14°C (Min)
Average Rainfall	1925 mm
Rivers	Tunga, Bhadra, Vedavathi, Yagachi, Hemavati and Netravathi
Area	7201 sq km
Population	1140905 (As per Census 2001)

#### **1.3 Availability of Minerals.**

##### **Natural Resources**

- Bauxite
- China Clay
- Iron Ore
- Quartz
- Building Stone
- Sand

#### **PRODUCTION OF MINERAL**

S.NO.	NAME OF MINERAL	PRODUCTION in tones 2010-2011
MAJOR MINERAL		
1.	Quartz	19.95
MINOR MINERAL		
2.	Building Stone	360 m3
3.	Sand	34675

SOURCE:- DEPT. OF MINES & GEOLOGY

**1.4 FOREST:** An area of 43022 hectares is covered by forest.

**1.5 Administrative set up:** Chikmagalur District comes under Mysore Division. The District is divided into seven taluks and the headquarters of there taluks are located at Chikmagalur, Kadur, Tarikere, Mudigere, Koppa, N.R.Pura and Sringeri. These taluks are grouped into two Revenue Sub-Divisions viz., Chikmagalur Revenue Sub-Division and Tarikere Revenue Sub-Division. Chikmagalur Revenue Sub-Division comprises of the taluks of Chikmagalur, Mudigere, Koppa and Sringeri, while Tarikere sub-division has jurisdiction over the taluks of Kadur, Tarikere and Narisimharajapura.

**1.6 Infrastructure**

- 3 Industrial estates existing,
- 1 Industrial estate proposed
- 3 Industrial Parks proposed
- Total 2689 Acres of Land Bankin Kadur Taluk of Chickmagalur District
- 2 Industrial Areas Proposed
- Notified land Bank 1689 Acre
- Government Land Bank 1000 Acre

**Power**

- Transmission and Distribution in the district is being done by Hubli Electricity Supply Company Limited (HESCOM)
- Chikkamagaluru district is served with power received from Sharavathi Hydro Electric Project and Bhadra power generating station
- Chikkamagaluru district is fed power from Master receiving station Shivamogga on 110 KV and 66 KV transmission lines
- KPTCL plans to establish sub stations at Kalasapura, Yagati, Neralakere, Shivani, Muthinakoppa in addition to upgrading few stations, replacing transformers and circuit breakers and providing additional transformers
- Average annual consumption:
  - Domestic consumption 980 Million Units.
  - Industry consumption 7.5 Million Units

**Water**

- The district is the birth place of six rivers - Thunga, Bhadra, Hemavathi, Vedavathi, Yagachi and Netravathi
- The net irrigated area to the net area sown is 12%

## 2. District at a glance

S.No	Particular	Year	Unit	Statistics
<b>1</b>	<b>Geographical features</b>			
(A)	Geographical Data			
	i) Latitude			12 <sup>0</sup> 54' and 13 <sup>0</sup> 53' North latitude
	ii) Longitude			75 <sup>0</sup> 04' and 76 <sup>0</sup> 21' East longitude
	iii) Geographical Area		Hectares	722075
(B)	Administrative Units			
	i) Sub divisions			2
	ii) Tehsils			7
	iii) Sub-Tehsil			11
	iv) Patwar Circle			272
	v) Panchayat Simitis			16
	vi) Nagar nigam			0
	vii) Nagar Palika			9
	viii) Gram Panchayats			226
	xi) Revenue villages			1117
	x) Assembly Area			5
<b>2.</b>	<b>Population (As per Census 2011)</b>			
(A)	Sex-wise			
	i) Male	2011	Nos	5,67,483
	ii) Female	2011	Nos	5,70,270
(B)	Rural Population	2011	Nos	8,98,079
<b>3.</b>	<b>Agriculture</b>			
A.	Land utilization			
	i) Total Area		Hectare	722075
	ii) Forest cover		"	200485
	iii) Non Agriculture Land		"	43022
	v) cultivable Barren land		"	28322
<b>4.</b>	<b>Forest</b>			
	(i) Forest		Ha.	200485
<b>5.</b>				
A.	<b>Cattle</b>			
	i) Cows		Nos.	386138
	ii) Buffaloes		Nos.	98279
B.	<b>Other livestock</b>			
	i) Goats		Nos.	74679
	ii) Pigs		Nos.	2460
	iii) Dogs & Bitches		Nos.	73556
	iv) <b>Railways</b>			
	i) Length of rail line		Kms	95.00



	<b>V) Roads</b>			
	(a) National Highway		Kms	176.25
	(b) State Highway		Kms	610.21
	(c) Main District Highway		Kms	1644.02
	(d) Other district & Rural Roads		Kms	2371.70
	(e) Rural road/ Agriculture Marketing Board Roads		Kms	Incl.in item (d)
	(f) Kachacha Road		Kms	3605.00
	<b>(VI) Communication</b>			
	(a) Telephone connection			42336
	(b) Post offices		Nos.	305
	(c) Telephone center		Nos.	148
	(d) Density of Telephone		Nos./1000 person	-
	(e) Density of Telephone		No. per KM.	-
	(f) PCO Rural		No.	-
	(g) PCO STD		No.	-
	(h) Mobile		No.	245021
	<b>(VII) Public Health</b>			
	(a) Allopathic Hospital		No.	14
	(b) Beds in Allopathic hospitals		No.	1420
	(c) Ayurvedic Hospital		No.	4
	(d) Beds in Ayurvedic hospitals		No.	28
	(e) Unani hospitals		No.	nil
	(f) Community health centers		No.	4
	(g) Primary health centers		No.	92
	(h) Dispensaries		No.	22
	(i) Sub Health Centers		No.	42
	(j) Private hospitals		No.	375
	<b>(VIII) Banking</b>			
	(a) Commercial Bank		Nos.	74
	(b) rural Bank Products		Nos.	35
	(c) Co-Operative bank products		Nos.	1
	(d) PLDB Branches		Nos.	8
	<b>(IX) Education</b>			
	(a) Primary school		Nos.	884
	(b) Middle schools		Nos.	875
	(c) Secondary & senior secondary schools		Nos.	327
	(d) Colleges		Nos.	99
	(e) Technical University		Nos.	4

Source : Directorate of Economics and Statistics, Govt. of Karnataka

### 2.1.1 Existing Status of Industrial area in the district of Chikmagalur

S. N.	Name of Indl.Area	Land acquired (in hectare)	Land developed (in hectare)	Prevailing Rate per sqm (in Rs.)	No.of plots formed	No.of plots allotted	No.of vacant plots	No.of units in production
	Amble Industrial Area, Chikmagalu	57.80	57.80	148	74	71	03	20

### 2.1.2 Existing Status of Industrial Estate in the district of Chikmagalur

S.N	Name of Indl.Estate	Land acquired (in hectare)	Land developed (in hectare)	Prevailing Rate per sqm(in Rs.)	Nos. formed		Nos. allotted		Nos. vacant		No.of units in production
					Plots	Shed	Plots	Shed	Plots	Shed	
1	Chikmagalur	5.3	5.3	495/-	74	28	74	28	0	0	72
2	Birur, Kadur Tq.	4.4	4.4	315/-	41	14	41	14	0	0	47
3	N.R.Pura	04	04	465/-	50	0	02	0	48	0	0

S.No	Industrial Estates	Extent (acres)
1	Chikkamagaluru	13
2	Birur, Kadur Tq	11
3	N. R. Pura	10

S.No	Industrial Areas	Extent (acres)
1	Amble Industrial Area, Chikkamagaluru	144

Source : Invest Karnataka 2016

## 3. INDUSTRIAL SCENERIO OF CHIKMAGALUR DISTRICT

### 3.1 Industry at a Glance

Sr No	Head	Unit	Particulars
1.	REGISTERED MSMEs	Nos.	10279
2.	LARGE INDUSTRIAL UNITS	Nos.	02
3.	TOTAL EMPLOYED IN MSMES	Nos.	38588
4.	NO. OF INDUSTRIAL AREA	Nos.	01
5.	NO. OF INDUSTRIAL ESTATE	Nos.	3
6.	NO. OF INDUSTRIAL PARK	Nos.	--
7	Total investments in MSMES	In Lakhs	22859

\*Total investments in MSMEs are from 2005 to 2016

### 3.2 YEAR WISE TREND OF UNITS REGISTERED under MSME

Year	NO. OF Units	Employment	Investment
2005-06	410	1553	774
2006-07	446	1748	718
2007-08	443	1392	1015
2008-09	507	1785	1687
2009-10	566	1807	2854
2010-11	595	1629	2569
2011-12	650	1788	2925
2012-13	304	866	2158
2013-14	339	1336	1884
2014-15	395	1385	1163
2015-16	382	2755	5112

Source : DIC CHIKMAGALUR

#### Key Industries



##### Agriculture and Food Processing:

- With varied agro climatic conditions and fertile soil conditions, the district offers huge potential for various food processing industries
- Approximately 35 % of the total MSME units in the district are engaged in Agriculture and food processing



##### Education, Textile and Tourism:

- **Education: Investment opportunities**-Private university, R&D Park with investment potential respectively, Rs. 500 Crore and Rs. 300 Crore
- **Textiles :** Investment opportunities in tiny and SSI units of Baby Bloomer Suits, Bandage Cloth , Infant Garments, Laundry, Readymade Fashion Garments, Saree Fall, School

Source : Invest Karnataka 2016

### 3.3: Details of existing Micro, Small Enterprises and artisan units in the district

NIC Code	Type of Industry	No.of units	Investment (Rs. in lakhs)	Employment
20	Agro based	1224	5615.32	6285
22	Soda water			
23	Cotton textiles	1578	2582.37	4760
24	Woolen, Silk & Artificial thread based cloths			
25	Jute & jute based			
26	Readymade garments & embroidery			
27	Wood/wooden based furniture	2415	3795.66	7731
28	Paper & paper products	236	603.81	867
29	Leather based	171	194.93	489
31	Chemical/Chemical based	375	788.98	1291
30	Rubber, plastic & petro based	118	394.63	556
32	Mineral based	57	145.27	258
33	Metal based (steel fab.)	127	408.96	384
35	Engineering units	707	1812.33	2953
36	Electrical machinery & transport equipments	117	281.85	536
97	Repairing & servicing	914	1021.90	2969
01	Others	1486	3569.86	5778
	Kachori making	0	0	0

Source: DIC (As on 31.03.2016)

### 3.4 Large Scale Industries / Public Sector undertakings

1. Geneva Power
2. Great Southern Coffees Pvt Ltd.
3. Pavanaganga Power
4. Vigyan Industries Limited, Tarikere - Ancillary of BEML Ltd.
5. N.K.G. Jayanthi Coffee, Mugthihalli, Chikkamagaluru

### 3.5 Major Exportable Item - Coffee And Engineering. Products, Pepper, and Cardamom.

### 3.6 Growth Trend

Emerging hub for storage/cold storage infrastructure and reeling (silk-based) industries

### **3.7 Vendorisation / Ancillarisation of the Industry:**

Fetling, machining & welding units at Tarikere are working as Ancillaries to M/s Vigyan Industries Limited, Tarikere.

### **3.8 Major Exportable item - Coffee**

#### **3.9.1 Service Enterprises**

1292 units with an Investment 1913.20 lakhs & Employment of 4077 person

#### **3.9.2 Potentials areas for service industry**

Automobile Service, Beauty parlour, Xerox, DTP, Internet browsing, IP Set repairs,

### **3.10 Potential for new MSMEs**

#### **Agriculture & Food Processing:**

- With varied agro climatic conditions and fertile soil condition, the district offers huge potential for various food processing industries
- Average farm size - 0.53 acre
- Cropping Intensity - 109%
- Chikkamagaluru is famous for coffee and is known as the 'coffee land' of Karnataka
- Approximately 35% of the total MSME units in the district are engaged in Agriculture and Food Processing
- 611 food processing units are present in the district

#### **Education, Textile and Tourism:**

- Education: Investment opportunities - Private university, R&D Park with investment potential of INR 500 Crore and INR 300 Crore respectively
- Textiles : Investment opportunities in tiny and SSI units of Baby Bloomer Suits, Bandage Cloth , Infant Garments, Laundry, Readymade Fashion Garments, Saree Fall, School Bags, School Uniforms, Surgical Dresses
- Tourism supportive industries: Investment opportunities - Corporate Hospitality Center with potential investment of INR 200 Crore
- Industries: Wood based, Forest produce

## **4. Existing Clusters of Micro & Small Enterprise**

### **4.1 DETAIL OF MAJOR CLUSTERS**

#### **4.1.1 Manufacturing Sector**

1. Food Processing cluster, Sakrayapatna, Chickmagalur district: DSR approved and Soft interventions approved by GOI for 5.25 lakhs, out of which GOI as sanctioned 4.5 lakhs and rest is from SPV.
2. Wodden Furniture cluster, gavanahalli, Chickmagalur district: DSR sanctioned by State and forwarded to DCMSME.

#### **4.1.2 Service sector**

1. Automobile repairs & machine shop & Auto machines, Kadur, Chickmagalur district: DSR sanctioned by State and forwarded to DCMSME.

## 4.2 Details for identified cluster

4.2.1 Name of the cluster :- M/s Ankura Food Processing Cluster, Sakraypatna, Kadur Tq.

1	Principal products manufactured	Jackfruit value added products
2	Name of the SPV	Ankura Food Processing Cluster
3	No.of functional units in the cluster	35
4	Turnover of the cluster	Rs. 150 lakhs
5	Value of exports from the cluster	--
6	Employment in cluster	100
7	Average investment in plant & machinery	Rs. 50000/-
8	Major issues / requirement	Technology, Lack of Skilled Labour
9	Presence of capable institutions	--
10	Thrust areas	Jack fruit based pickles
11	Problems & constraints	Skilled labourer and proper power supply

Present status of cluster: DSR approved and Soft interventions approved by GOI for Rs. 5.25 lakhs, out of which GOI as sanctioned Rs.4.5 lakhs and rest is from SPV.

4.2.2 Name of the cluster: M/s Kadur Auto Cluster, Kadur.

Present status of the cluster:- DSR sanctioned by State and forwarded to DC MSME

4.2.3 Name of the cluster :- Wooden Furnitures & Allied Cluster, Srinivasa Nagar,Gavanahalli, Chikmagalur.

Present status of cluster: DSR sanctioned by State and forwarded to DC MSME.

## 5. STEPS TO SET UP MSMEs

Following are the brief description of different agencies for rendering assistance to the entrepreneurs.

S.No.	Type of assistance	Name and address of agencies
1.	Registration of MSMEs	Online Registration. <a href="http://www.udyogaadhaar.gov.in">www.udyogaadhaar.gov.in</a>  <b>Director, MSME-Development Institute</b> Ministry of MSME, Govt. of India, Rajaji Nagar Industrial Estate, West of Chord Road, Bangalore. 560010 ☎ Phone : 080-23151581/82/83 ✉ e-mail: <a href="mailto:dcidi-bang@dcmsme.gov.in">dcidi-bang@dcmsme.gov.in</a> www.msmedibangalore.gov.in
2.	Identification of Project Profiles, Techno-economic and Managerial consultancy Services , Market survey and economic survey reports.	<b>MSME-Development Institute</b> Ministry of MSME, Govt. of India, Rajaji Nagar Industrial Estate, West of Chord Road, Bangalore. 560010 ☎ Phone : 080-23151581/82/83 ✉ e-mail: <a href="mailto:dcidi-bang@dcmsme.gov.in">dcidi-bang@dcmsme.gov.in</a> www.msmedibangalore.gov.in  <b>Chief Executive Officer &amp; Chief Adviser</b> <b>Technical Consultancy Services Organisation of Karnataka</b> (A Govt. of Karnataka Organisation) 4 <sup>th</sup> Floor, Basava Bhavan, Basaveshwara Circle, Bangalore 560 001. ☎ Phone : 080-22266134/2226152/41512382 ✉ e-mail: <a href="mailto:tecsok1@airtelmail.in">tecsok1@airtelmail.in</a> www.tecsok.com
3.	Industrial Land	<b>Chief Executive Officer &amp; Executive Member</b> <b>Karnataka Industrial Areas Development Board (KIADB)</b> 4 <sup>th</sup> & 5 <sup>th</sup> Floor, East Wing, Khanija Bhavan, Race Course Road, Bangalore. – 560001 ☎ Phone : 080-22265383/22267900 ✉ e-mail: <a href="mailto:kiadb@mail.nic.in">kiadb@mail.nic.in</a> <a href="http://www.kiadb.in">www.kiadb.in</a>
4.	Industrial Shed	<b>Chairman</b> <b>Karnataka State Small Industries Development Corporation Limited., (KSSIDC),</b> Industrial Estae, KM Road, Chikkamagalur-577101 ☎ Phone : 08262-220504 <a href="http://www.kssidc.kar.nic.in">www.kssidc.kar.nic.in</a>
5.	Financial Assistance	<b>All Nationalized Banks</b>  <b>Karnataka State Financial Corporation (KSFC)</b> PB No. 168, Near District Fiel, Hosamane Extension, Chikkamagaluru - 577101 ☎ Phone : 08262-230447/234045 ✉ e-mail: <a href="mailto:ckm@ksfc.in">ckm@ksfc.in</a> www.ksfc.in
6.	For Raw Materials under Govt. Supply	<b>Chairman</b> <b>Karnataka State Small Industries Development Corporation Limited., (KSSIDC)</b> Industrial Estae, KM Road, Chikkamagalur-577101 ☎ Phone : 08262-220504 <a href="http://www.kssidc.kar.nic.in">www.kssidc.kar.nic.in</a>  <b>General Manager</b> <b>National Small Industries Corporation (NSIC)</b> No. 25, First Main Road, KSSIDC Industrial Estate, 6 <sup>th</sup> Block, Rajaji Nagar, Bangalore. 560010 ☎ Phone : 080-23109059/23307791/23147858 ✉ e-mail: <a href="mailto:boban@nsic.co.in">boban@nsic.co.in</a> www.nsic.co.in
7.	Plant & Machinery under hire/purchase basis	<b>General Manager</b> <b>National Small Industries Corporation (NSIC)</b> No. 25, First Main Road, KSSIDC Industrial Estate, 6 <sup>th</sup> Block, Rajaji Nagar, Bangalore. 560010 ☎ Phone : 080-23109059/23307791/23147858 ✉ e-mail: <a href="mailto:boban@nsic.co.in">boban@nsic.co.in</a> www.nsic.co.in
8.	Power / Electricity	<b>Mangalore electricity supply company limited, MESCOM</b>
9.	Technical Know-How	<b>Managing Director</b>

		<b>Karnataka Council for Technological Upgradation (KCTU)</b> 4th Floor, Basava Bhavan, Basaveswara Circle, Bangalore - 560001 ☎ Phone : 080-22250722 ✉ <a href="mailto:md-kctu-ka@nic.in">e-mail: md-kctu-ka@nic.in</a> ✉ <a href="mailto:info-kctu-ka@nic.in">e-mail: info-kctu-ka@nic.in</a> <a href="http://www.kctu.kar.nic.in">www.kctu.kar.nic.in</a>
10.	Quality & Standard	<b>Scientist 'F' &amp; Head</b> <b>Bureau of Indian Standards (BIS)</b> Peenya Industrial Estate, 1 <sup>st</sup> Stage, Tumkur Road, Bangalore-560058 ☎ Phone : 080-28394955/283949656 ✉ <a href="mailto:bnbo@bis.gov.in">e-mail: bnbo@bis.gov.in</a> <a href="http://www.bis.org.in">www.bis.org.in</a>
11.	Marketing & Export Assistance	<b>Visvesvaraya Trade Promotion Centre (VTPC)</b> III Floor, 'A' Block, BMTC Complex, Shantinagar, Double Road, Bangalore -560027. ☎ Phone 080-22230853 / 22210633 / 22534444 ✉ <a href="mailto:md@vtpckarnataka.gov.in">e-mail: md@vtpckarnataka.gov.in</a> <a href="http://www.vtpckarnataka.gov.in">www.vtpckarnataka.gov.in</a>  <b>Engineering Export Promotion Council (EEPC)</b> <b>Sub-Regional Office,</b> 2 <sup>nd</sup> Floor, Vinayaka Complex, 44/45 Residency Road Cross, Bangalore- 560025 ☎ Phone : 080-25581396/25588619 ✉ <a href="mailto:eepcsroblr@eepecindia.net">e-mail: eepcsroblr@eepecindia.net</a> <a href="http://www.eepecindia.com">www.eepecindia.com</a>  <b>EXIM Bank India</b> Ramanashree Arcade, Floor 4, 18 M G Road, Bangalore. ☎ Phone : 080-25585755 ✉ <a href="mailto:eximbro@eximbankindia.in">e-mail: eximbro@eximbankindia.in</a> <a href="http://www.eximbankindia.in">www.eximbankindia.in</a>
12.	Other Promotional Agencies	<b>Managing Director</b> <b>Karnataka Udyog Mitra</b> 3rd Floor, Khaniya Bhavan (East Wing), No.49, Race Course Road, Bangalore – 560 001 ☎ Phone : 080-22282392/2228 5659/2238 1232/2228 6632 ✉ <a href="mailto:md@kumbangalore.com">e-mail: md@kumbangalore.com</a> <a href="http://www.kum.karnataka.gov.in">www.kum.karnataka.gov.in</a>

## 6. Any other important additional information of the district

### Tourism

- **Baba- Budan Hills Range** situated towards north of Chickmagalur town. The loftiest point of the range is Mullaiyanagiri which is about 6355 feet above sea level. **Dattatreya Peetha** is situated on the Baba- Budan Hills Range. A laterite cave is situated here.
- **Sri Sharada Peeta, Sringeri & Sharadamba Temple:-** The world famous Sharadamba Temple, Sringeri, situated on the banks of Tunga River is about 90 km from Chickmagalur.
- **Horanadu Annapoorneshwari Temple:-** The famous Annapoorneshwari Temple, Horanadu, situated amidst the thick forest & hill ranges, is about 95 km from Chickmagalur.



- **Srimad Rambapuri Peeta, Balehonnur:-** It is one of the Veerashaiva Pancha
- Peetas situated on the banks of the river Bhadra, it is about 55 km from Chickmagalur.
- **Kalaseshwara temple, Kalasa-** It is known as Dakshna Kashi is about 90 km from Chickmagalur.





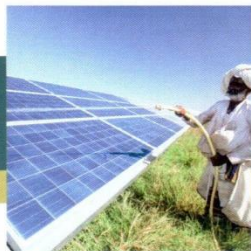
# MSME SCHEMES

## MSME OPERATES A NUMBER OF PROMOTIONAL SCHEMES FOR THE MSE SECTOR:

- ★ Credit Linked Capital Subsidy Scheme for Technology Upgradation (CLCSS)
- ★ Credit Guarantee Fund Trust for Micro and Small Enterprises (CGTMSE)
- ★ ISO 9001/ISO 14001 HACCP Certification Reimbursement Scheme.
- ★ Cluster Development Programme for identified Cluster of MSE's
- ★ Market Development Assistance International Trade Fairs (For Individual MSEs)
- ★ National Awards for outstanding MSME Entrepreneurs, R&D efforts in MSME Sector
- ★ Quality products in MSE sector and Innovation effort (For Individual MSMEs)
- ★ TREAD Scheme for Women (Individual Regd. Association & NGOs)
- ★ Capacity Building/ Seminar for Industrial Associations
- ★ Public Procurement Policy - MSEs 2012

## NATIONAL MANUFACTURING COMPETITIVENESS PROGRAMME (NMCP) SCHEMES FOR MSMEs UNDER PPP MODEL:

- ★ Marketing Support / Assistance to MSMEs ( BAR Code)
- ★ Support for Entrepreneurial and Managerial Development of MSMEs through Incubators
- ★ Enabling Manufacturing Sector to be Competitive through Quality Management Standards & quality Technology Tools (QMS/QTT)
- ★ Building Awareness on Intellectual Property Rights for MSMEs (IPR)
- ★ Lean Manufacturing Competitiveness Scheme for MSMEs (LMCs)
- ★ Design Clinic Scheme for design expertise to MSMEs Manufacturing sector (DESIGN)
- ★ Marketing Assistance and Technology Upgradation Scheme for MSMEs (MATU)
- ★ Technology and Quality Upgradation support to MSMEs (TEQUP)
- ★ Promotion of Information & Communication Technology in Indian MSME Sector (ICT)



Government of India

Ministry of Micro, Small & Medium Enterprises

**MSME DEVELOPMENT INSTITUTE**

Rajajinagar Industrial Estate, Bengaluru - 560 010, Karnataka, India

T: 080 23151581-82-83 | F: 080 23144506

E: dcdi-bang@dcmsme.gov.in | W: www.dcmsme.gov.in

**For more details visit our website:**

[www.msmedibangalore.gov.in](http://www.msmedibangalore.gov.in)